

**Pifer's**

1506 29th Ave. S.  
Moorhead, MN 56560

FIRST CLASS MAIL  
PRESORTED  
U.S. POSTAGE  
**PAID**  
FARGO ND  
PERMIT #684



*Don't Gamble with Your Genetics!*



*Annual Bull & Female Sale*

# Gill Red Angus



*Don't Gamble with Your Genetics!*



*"You Buy Our Bulls,  
We Will Bid on  
Your Calves"*



**November 17, 2008**

Monday At 12:30 p.m. (MT)  
At the Ranch Near  
Timber Lake, South Dakota

*Selling 90 Coming 2 Year Old Red Angus Bulls  
100 Commercial Bred Heifers*

# Gill Red Angus



**"You Buy, We Bid"  
Aged Bull Sale**



**November 17, 2008**

Monday At 12:30 p.m. (MT)  
At the Ranch Near  
Timber Lake, South Dakota

## RANCH HEADQUARTERS

Gill Red Angus  
HC 64, Box 146 • Timber Lake, SD 57656  
E-Mail: gillreds@dishmail.net  
Larry, Janet & Kenny Gill • 605-865-3288  
Kenny & Laura Gill • 605-865-3525  
Brent & Emily Gill • 605-848-3722

## SALE DATE & TIME

Monday, November 17, 2008 • 12:30 p.m.

## SALE LOCATION

Gill Red Angus sale facility • On the ranch  
Timber Lake, South Dakota

## SALE-DAY TELEPHONE

605-848-1996  
605-848-3722  
701-730-0134 • Bryan's Cell (service is  
questionable)

## DIRECTIONS TO SALE

Gill Red Angus Ranch is located 120 miles south  
of Bismarck, ND, 34 miles west of Mobridge, SD  
and 6 miles east of Timber Lake, SD.

**If traveling east from Timber Lake:** Go 6 miles  
on Highway 20 to ranch turnoff. Turn left, go  
north 1.5 miles. Turn left, go west ½ mile.

**If traveling west from Mobridge or Bismarck:**  
From Highway 63 and Highway 20 Junction, go  
8.5 miles west to ranch turnoff. Turn right, go  
north 1.5 miles. Turn left, go west ½ mile.

## ACCOMODATIONS

Mobridge, South Dakota  
Wrangler Motor Inn • 605-845-3641

Grand River Casino • 1-800-475-3321

## LUNCH

Complimentary lunch available on sale day.

## MARKETING & BREEDING MANAGER

Bryan & Kristin Gill  
4813 Amberglow Dr  
Bismarck, ND 58503  
Cell (701) 730-0134  
E-Mail: bigredgenetics@hotmail.com

## AUCTIONEER

Roger Jacobs • 406-373-7385

## RINGMEN

Terry Robinson • *Farm & Ranch Guide*  
701-255-3037 or 701-471-5153 (cell)

Chris Effling • *Dakota Farmer*  
605-769-0142

Donnie Leddy • *Cattle Business Weekly*  
605-695-0113

## BUYER REPRESENTATIVES

Bill Pelton, Montana  
406-671-5100 (cell)

Terril Ostrum, Colorado • 303-570-9284  
Clint Berry - RAAA (Dr. Hoss) • 417-844-1009

*Buyers unable to attend sale may have their  
bid represented by contacting the auctioneer,  
one of the buyer representatives, the marketing  
manager or Gill Red Angus.*

## SALE CATALOG

Pifer's Livestock Marketing • Moorhead, Minnesota

## SALE VETERINARIAN

Oahe Vet Clinic  
Mobridge, South Dakota • 605-845-3634

## SALE ORDER

Cattle will sell in catalog order, but are subject to  
change on sale day.

## INSPECTION OF CATTLE

Sale cattle will be available for inspection at any  
time prior to the sale.

## LOT TAGS

Ear tag numbers on the sale cattle will  
correspond to the sale catalog.

## DELIVERY OR \$\$\$ OFF

Pick up your bulls on sale day or the following  
day and receive \$25 off each bull purchased.  
Or Gill Red Angus will assist in making delivery  
arrangements of the sale animals to the new  
purchaser's destination at the least cost possible.  
All such deliveries are at the buyer's risk.

## SALE TERMS & CONDITIONS

Any terms and conditions not covered by  
the catalog will refer to the Standard Terms  
& Conditions set forth by the Red Angus  
Association of America.

## SEMEN TEST

All bulls will be semen checked before sale day.

## GILL RED ANGUS GUARANTEE

All bulls will have passed a semen test before the  
sale. Gill Red Angus highly recommends that the  
buyer has them semen checked in the spring before  
turn out. Any fertility problems that are found, will  
be covered under our guarantee at that time. The  
Gill Red Angus guarantee includes; A healthy bull at  
delivery time, a fertile bull at delivery time, a fertile  
bull at turn out time providing that they are semen  
checked by a Veterinarian. The Gill Red Angus  
guarantee does not cover sickness, injury, or death  
or poor fertility that is caused by sickness or injury.  
Gill Red Angus will work with the buyer as much as  
possible to make sure that the buyer has a bull at  
turn out time.

Hello Cattlemen,

What a year! We have been driving and flying all over the country working hard for our customers. It seems like someone from Gill Red Angus is always on the road, spending time visiting our customers and searching for more calf buyers and feedlots for you.

Most everyone had good grass and hay this summer, which means you most likely don't have to buy that expensive hay again as you did the past few years. We have been breeding for easy fleshing females since we began in 1979, and it definitely shows today. We graze our cowherd all year long and they seem to stay in great condition without any supplement.

We put on thousands of miles every fall and winter going to the sale barn and bidding on your calves. The only thing you have to do to qualify is become a Gill Red Angus customer. When we bid on a group of calves, it seems like they bring an additional \$3 to \$5/cwt or around \$2500 a load. That is nearly a FREE bull. Please take the time to read our customer service page in this catalog for more information on this.

The bulls this year are a very impressive set. We managed them a little different than in the past. They never got any corn the first winter or this fall. Instead they got Loomix liquid feed, ground hay and distillers grain. They actually gained better than in the past. We think it was better for them and their feet as well. Over the summer they were on grass alone, without any supplement and they gained 2.01 lbs a day and actually came into the lot a little fleshy.

The bred heifers are another great group. We purchased two groups last fall. They came from Namken Red Angus and John Knutson. Another group of heifers are consigned by the Fogalman Ranch. All three of these ranches are our customers and they all three buy top quality bulls. These heifers will be weighing 1000 lbs or more by sale day. It will be hard to find a better set of heifers anywhere this fall.

Superior Livestock is again broadcasting the sale live on RFD-TV. If you can't make it to the sale, you can sit in the comfort of your home or office, watch the sale, and purchase your bulls over the phone. If you are not comfortable with this option, you can still give us your bids and they will be represented honestly and fairly.

The way we see it, the commercial rancher really only has one customer, and that is the feeding industry. Your seedstock provider had better be raising the type of product that both the commercial rancher and the feeder can make money on. Here at Gill Red Angus, we feel we are. We do all the homework for you, and find out what works and what doesn't. Rest assured that if you are our customer, we will do everything we can to help you improve your bottom line and your next calf crop.

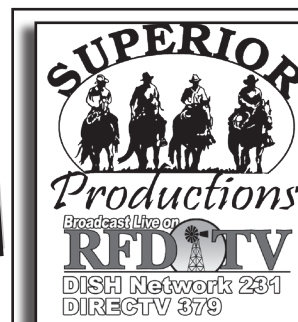
If we can help you out in any way, please let us know and we will do all we can to answer your questions and make your bull buying experience a good one.

See you at the sale.

**The Gills**

**"Free Shipping up  
to 300 miles on  
bulls purchased for  
\$2000 or more."**

**Ave REA  
Measurements  
of 1.15 square  
inches/CWT.**



## HOW TO PARTICIPATE AS AN ABSENTEE BUYER

We prefer for each of you to be in attendance on sale day. Realistically, we know there will be some scheduling conflicts and distance limitations. In these cases, we have arranged for you to be able to participate in the sale on an absentee basis.

If possible, you can come by and evaluate the animals prior to sale day. If distance is a problem, we can also provide you with a videotape or DVD of all the cattle for home viewing. All of the lots in the sale will be available for viewing online prior to sale day at [www.superiorlivestock.com](http://www.superiorlivestock.com) as well.

Customers tell us that the video does a good job of showing conformation, structural correctness, and how the cattle travel, etc. Our sale book, with complete data on each animal, is very helpful. Please feel free to call us with questions. In addition, there will be qualified persons on hand sale day to evaluate the bulls and answer any questions you might have.

## HERE'S HOW IT WORKS

Please call Superior Productions at 800-431-4452 and pre-register for your buyer's number. At that time they will give you the bid line number that you will use on sale day to place bids over the phone. The sale will be broadcast via satellite on RFD-TV - Dish Network Channel 231 and DirecTV channel 379. The sale can also be seen on the internet at [www.superiorlivestock.com](http://www.superiorlivestock.com). Bidders who are successful in making purchases via satellite will be contacted by Gill Red Angus after the sale to settle payment and shipping arrangements.



**Visit Our Website  
[www.gillredangus.com](http://www.gillredangus.com)**

**"You Buy Our Bulls, We Will Bid on Your Calves"**

**"You Buy Our Bulls, We Will Bid on Your Calves"**



# The Gill Red Angus Customer Marketing Program

**"You Buy Our Bulls, We Will Bid on Your Calves"**

Something that sets us apart from most of our competition is a Customer Buy Back Program. Our slogan is "You buy our bulls and we will bid on your calves." This has really helped our customers on selling day. We ran some calves up as much as \$5 per hundredweight. You add that up on a load of 600-pound steers, and you made an extra \$2,500 just by being our customer. Compare that to our sale average the last couple years - that's a free bull. How can you go wrong?

**Here is how it works:**

✓ First you must be a Gill Red Angus customer. At marketing time, contact Gill Red Angus with the marketing option you wish to pursue:

- **Complete Retained Ownership**
- **Partial/Partnership Retained Ownership**
- **Livestock Auction or Off-the-Farm Marketing** - Sell 100% of your calves off-the-farm or at the stockyards and a Gill staff member will be there to place a bid on them for you.
- **Replacement Heifer Marketing** - Market your top-quality open and bred heifers through both of our annual production sales in February and November. (We have spent thousands of dollars on advertising over the years. Use our past advertising and known name to market your replacement females.) Call for more information.
- **Discounted semen available** to all customers who want to AI.
- **Discounted vet supplies** through DeTye Vet Supply.

✓ When possible, we will work with our customers to help form co-mingled loads of calves. Upon harvest, if possible, Gill Red Angus will prepare a report, complete with feed yard and harvest data, for your use. The Gill staff will then schedule a meeting with you to discuss ways we can help add profit to your bottom line.

✓ We are also available for consultations regarding breeding, replacement heifer procurement, and all marketing options. We will help you in any way we can to make your bottom dollar grow.

**"You Buy Our Bulls, We Will Bid on Your Calves"**



**"You Buy Our Bulls, We Will Bid on Your Calves"**

**WR MR. RED DAWG 5335**  
March 5, 2005 1046249

BUF CRK Valentino N031 922519      BECKTON Julian GG B571  
BUF CRK Primrose 5679

TMAS Ms Fortune 114 771795      LMAN King Rob 8621  
STRAKA Ms Fortune 4109

BW	WW	YW	MILK	TM	STAY	MARB	RE	BF
2.8	59	110	20	50	16	-.08	.36	.01

REA: 20.50 square inches - Ratio: 144  
 REA/cwt: 1.28 square inches  
 So far Red Dawg has 131 calves weaned and they average 637 lbs with an average ratio of 102.  
 - These same calves are averaging 1.15 square inches of REA/cwt  
 - Sons and daughters are extremely thick, long, and athletic.  
 - More power and muscle than any other sire ever used by Gill Red Angus and they don't get to big frame wise.  
 - Selling 19 sons



**Mr. Red Dawg 5335**



**Dam of Mr. Red Dawg 5335**



**MKL CRK Combination 4149**



**Dam to MLK CRK Combination 4149**



**MLK CRK COMBINATION 4149**  
March 18, 2004 987155

LSF Combination A301M 833209      LCHMN Top Brass 1049H  
WHF Lass 27G-29J

BJR Sun Gal 4X-561 577972      BJR Monu 4X-303  
BJR Sun Gal 1193-375

BW	WW	YW	MILK	TM	STAY	MARB	RE	BF
-1.6	27	62	10	23	15	.18	-.06	.00

- His calves are averaging 1.04 square inches of REA/cwt  
 - Combo's calves have a ratio of 104 for marbling and 101 for REA  
 - His calves all seem to be dark red and classy made.  
 - We have used Combo exclusively on first calf heifers  
 - Selling 12 sons

**"Go the extra mile, it is never crowded"**



**PIE MAXIMIZER 5052**  
February 19, 2005 1029127

PIE Atlantic 2204 861290  
PIE Power Lady 9077 687828  
RED Cole Mister "E" 9J PIE Boteet 899  
BJR JR 107  
PIE Red Lady Powertrend

BW	WW	YW	MILK	TM	STAY	MARB	RE	BF
2.6	47	76	25	48	10	-.06	.40	-.01

Marbling: 3.89% Ratio: 113  
REA: 16.52 square inches - Ratio: 120  
REA/cwt: 1.18 square inches  
- Sires bigger framed and bodied calves with a lot of length.  
- His calves are averaging 1.14 square inches of REA/cwt  
- Selling 11 sons



Maximizer 5052



**OHRR 10H DAKOTA RAMBLER 75R**  
February 22, 2005 1025344

OHRR Dakota Copper 29K 709597  
OHRR Ms Scarlett 10H 30162  
LCHMAN Copper Rob 1204D  
MESSMER Ophelia 9502  
LCHMN Rampage 1098E  
OHRR Ms 925 Scarlett 15F

BW	WW	YW	MILK	TM	STAY	MARB	RE	BF
4.7	44	70	21	43	13	-.12	.18	.00

Marbling: 3.62 %  
REA: 16.30 Ratio: 125  
- Has one of the best uddered dams in the breed. She recently sold for \$18,500 to Six Mile Red Angus in Canada.  
- His calves are way above industry average for REA/cwt.  
- He has had 75 calves and they are averaging 77 lbs at birth and 636 lbs at weaning.  
- Selling 13 sons



Dakota Rambler 75R



Dam of Dakota Rambler 75R



SRN Heavens Door 2095



**SRN HEAVENS DOOR 2095**  
March 6, 2002 830626

LCHMN Hevn's Sake 1002F 532901  
LCHMN Eleanor J1266 691207  
LAKOTAS Heavenly 305  
LEACHMAN Prilark  
BUF CRK CHF 824-1658  
LEACHMAN Eleanor

BW	WW	YW	MILK	TM	STAY	MARB	RE	BF
3.9	56	92	12	39	14	-.16	.13	.01

- His calves are averaging 1.03 square inches of REA/cwt  
- 164 calves have been weaned out of Heavens Door and they are averaging 651 lbs with a weaning ratio of 102  
- Selling 7 sons



Dam to Heavens Door



**BCRR GEMSTONE 346**  
March 20, 2003 892629

BUF CRK Barney 3474 455766  
SODAK Gem H8058 622651  
BUF CRK Baron 2678  
OLE Sunflower 359 PB08  
STRATHE Onward 620  
SODAK Gem 1034

BW	WW	YW	MILK	TM	STAY	MARB	RE	BF
0.7	34	53	23	40	12	-.09	.00	-.01

REA: 14.90 square inches - Ratio: 101  
REA/cwt: 1.09 square inches  
- We have used Gemstone successfully on both cows and heifers.  
- His first daughters are beautiful cows with great udders and body structure.  
- Sires smooth made cattle.  
- He has sired 117 calves and they have averaged 81 lbs at birth and 657 lbs at weaning.  
- Selling 11 sons



BCRR Gemstone 346



### PIE ACCELERATOR 4028

February 17, 2004 979303

PERKS Advance 121R  
765746

RBJR Advance A709  
PERKS Miss Rambo 8105

PIE Ms Dinaro 1035  
807788

PIE Dinaro 9185  
PIE Ms Big Cricket 626

BW	WW	YW	MILK	TM	STAY	MARB	RE	BF
2.6	16	45	8	16	10	.02	.29	.00

- REA: 15.95 square inches - Ratio: 102  
 REA/cwt: 1.14 square inches  
 - Sires real thick made sons that have a lot of style.  
 - Out of our favorite cow at Pieper Red Angus  
 - His calves are averaging 1.11 square inches of REA/cwt  
 - Selling 9 sons



Accelerator 4028



Lot 1



### DKK ADDICTION N10

January 17, 2003 923316

BJR JR 107  
411396

LMB Johny Reb 091  
BJR Tidy Bee 677-6186

DKK DIXIE 901  
682531

GLACIER Divide 310  
CK'S Miss Pan 2028

BW	WW	YW	MILK	TM	STAY	MARB	RE	BF
3.1	20	28	29	39	12	.00	.13	-.02

- REA: 13.30 square inches  
 - Addiction has sired 244 calves in his career and his calves are averaging 75lbs at birth.  
 - We have used Addiction exclusively on first calf heifers.  
 - Dam has 107.7 MPPA  
 - His calves are averaging 1.16 square inches of REA/cwt  
 - His offspring have an average ratio of 104 on marbling and 103 on REA  
 - Selling 3 sons



DKK Addiction N10

1



### LMG GILLS COMBO 7577

April 28, 2007 1212335

MLK CRK Combination 4149  
987155

LSF Combination A301M  
BJR Sun Gal 4X-561

LMG Miss Daorv 5083  
1068576

LCC Tassel Executive61J  
LMG Miss Daorv 2046

BW	WW	YW	MILK	TM	STAY	MARB	RE	BF
0.3	28	57	17	31	13	.08	-.01	.00

Retaining 1/4 semen interest

BW: 70 lbs  
WW: 683 lbs

WOW! This bull is worthy of starting any sale in the country. He is very complete in every aspect. First, he is deep bodied from front to back, which is why he is possibly the easiest keeping bull in the sale. He went on grass fleshy, came off grass fleshy, and his daughters will be as well. This is the kind of bull we all need to be using, if you want to beat these high feed costs we are facing today. Along with being easy keeping, he is classy made, thick quartered and top line, deep in the flank and twist, has great feet, and has a disposition of a kitten. His dam is a real good Tassel Executive daughter that did a great job as a first calf heifer. His sire, MLK Combination is possibly the best son of the top ABS sire, LSF Combination. MLK Combination is out of a super cow that is 11 years old and is still doing an awesome job and has a great udder. MLK Combination is possibly the best-footed bull I have ever seen as well. He sires stylish calves that have both calving ease and growth. Everyone needs to take a good serious look at this guy.

Pen 1



Lot 2

**2**  **LMG GILLS BIG DAWG 7598**  
**May 19, 2007** **1212197**

WR Mr. Red Dawg 5335 1046249 BUK CRK Valentino N031 TMAS Ms Fortune 114  
 LMG MTX 672-827 629258 HAMMEL Run Cloud 525 LMG MTX 672

BW	WW	YW	MILK	TM	STAY	MARB	RE	BF
0.2	35	68	17	35	14	.02	.21	.01

**BW: 84 lbs**  
**WW: 608 lbs**  
**IMF Ratio: 114**  
**REA/cwt: 1.40 square inches**  
**REA Size Ratio: 110**

If you want a true herd bull out of an awesome cow family, then you better sit up and pay attention here. First off, take a look at this guys EPDs. They are about as even as you could ask for. Once you get passed those, then look at his scan data. He has a marbling ratio of 114 and a rib eye ratio of 110 and he measured 1.40 square inches of rib eye for every hundred pounds of body weight. Now get passed all of those numbers and take a look at his dam and what she has done. In 2003, she raised the high selling bull of the day for \$4000 selling to Hageman Red Angus, SD. Then in 2004 she raised our high selling bred heifer in the Santa Sale going to Nordlund Stock Farm, MN for \$5000, where she is now a donor cow for them. Then in 2005 we sold another daughter to Rich Waller, NE for \$3750, and then last fall we sold a son to Shane Lynch, Keldron, SD for \$3500! This old gal is a Hammil Run Cloud 525 daughter and doesn't miss a beat and has a MPPA of 102. She has a super udder, great depth of body and really easy fleshing, plus her feet are near perfection. Study these photos and then study the bull. He is that good!  
 Pen 1



Maternal Sister of Lot 2



Maternal Sister of Lot 2

**3**  **LMG GILLS COMBO 7586**  
**May 5, 2007** **1212341**

MLK CRK Combination 4149 987155 LSF Combination A301M BJR Sun Gal 4X-561  
 LMG Miss Stephanie 5053 1068589 BCRR Gemstone 346 LMG Stephanie 903

BW	WW	YW	MILK	TM	STAY	MARB	RE	BF
0.2	33	62	15	32	13	.14	.03	-.01

**BW: 76 lbs**  
**WW: 714 lbs**  
**IMF Ratio: 151**  
**REA/CWT: 1.13 square inches**

Combo 7586 is another real complete, powerful made bull. His dam is a BCRR Gemstone daughter. We purchased Gemstone from Bullis Creek Red Angus, NE with the idea of getting some super daughters, and so far he has done just that. His daughters are doing a great job, and are made right with good feet and udders, plus they are the easy keeping kind we love. His dam has a 104 MPPA. He has great EPDs and did good on both the cow and on grass.  
 Pen 1



Lot 4

**4**  **LMG GILLS ACCELERATOR 7622**  
**May 29, 2007** **1212220**

PIE Accelerator 4028 979303 PERKS Advance 121R PIE Ms Dinero 1035  
 SEVE Penny 027K 726451 BADLANDS Bonus 702 WWR Miss Presidio 440

BW	WW	YW	MILK	TM	STAY	MARB	RE	BF
1.8	21	48	11	22	12	-.05	.10	.00

**BW: 80 lbs**  
**WW: 604 lbs**  
**REA/CWT: 1.11 square inches**

Here is the best son to date out of the muscle machine, PIE Accelerator 4028. Accelerator has done a good job for us, and this guy explains why we bought him. Feeders would just go gogga over a set of steer calves sired by this bull. Muscle, length, and depth best describes this guy. We purchased his dam from Severence Red Angus, ND several years back, and she has done a good job for us over the years. This guy will definitely grab your eye sale day.  
 Pen 1

Retaining 1/4 semen interest

**5**  **LMG GILLS RED DAWG 7594**  
**May 7, 2007** **1212295**

**BW: 8 lbs**  
**WW: 646 lbs**  
**IMF Ratio: 130**  
**REA/CWT: 1.15 square inches**  
**REA Size Ratio: 102**

WR Mr. Red Dawg 5335  
 1046249

BUF CRK Valentino N031  
 TMS Ms Fortune 114

LMG Stormy 4041  
 968468

LMG Gills Monument 1504  
 LMG Stormy 947

BW	WW	YW	MILK	TM	STAY	MARB	RE	BF
1.9	37	72	17	36	13	.13	-.15	.19

WR Mr. Red Dawg 5335 is doing just what we had hoped for. When Donnie Leddy called me and told me about him before he sold as a yearling, I got a little excited and went down to have a look at him. He really stood out and had that herd bull look to him. He was stacked with muscle, style and length, plus he scanned the biggest rib eye the breed has ever seen! But then we went out and looked at his dam, and WOW is she a tank! Not that big on frame, but big on depth and length. Every cow in the breed should look like her. She has a good udder and great feet, plus she has a 107 MPPA! After we saw her we knew we had to own this bull. A few partners and us ended up paying \$30,000 for him and we would do it again. He sires so much muscle and length. You need to take a look at all his sons sale day and then go over to our bulls that will be in our spring sale and look at them. He is so consistent and does a great job. This guy is a good representation of his calves. Stout, long, and good!  
 Pen 1



Lot 5

**6**  **LMG GILLS HEAVENS DOOR 7596**  
**June 1, 2007** **1212300**

**BW: 88 lbs**  
**WW: 745 lbs**  
**IMF Ratio: 103**  
**REA/CWT: 1.09 square inches**  
**REA Size Ratio: 105**

SRN Heavens Door 2095  
 830626

LCHMN Hevn's Sake 1002F  
 LCHMN Eleanor J1266

LMG Princess 4052  
 968489

VGW Chateau 128  
 CFRA T3 Princess

BW	WW	YW	MILK	TM	STAY	MARB	RE	BF
2.4	47	78	16	39	13	-.07	.15	.01

We have been selling Heavens Door sons now for quite a few years, and the commercial ranchers just love them. They may not be pretty, but they are deep and thick made. His daughters are some super cows that are very easy keeping. This guy will do the same.  
 Pen 1

**7**  **LMG GILLS BIG DAWG 7630**  
**May 17, 2007** **1212385**

**BD: 05/17/2007**  
**BW: 88 lbs**  
**WW: 704 lbs**  
**REA/CWT: 1.14 square inches**  
**REA Size Ratio: 112**

WR Mr. Red Dawg 5335  
 1046249

BUF CRK Valentino N031  
 TMS Ms Fortune 114

LMG Marie 4002  
 968394

VGW Chateau 128  
 LMG Marie 005

BW	WW	YW	MILK	TM	STAY	MARB	RE	BF
3.6	48	87	16	40	14	-.04	.25	-.01

Retaining 1/4 semen interest

Here is another prime example of why we are using Red Dawg so hard. This guy is as good of a bull that you will find anywhere. Long, deep, stylish, and very thick made. Muscle, Muscle, Muscle! When you see him, you will realize that you will have to own him. I really think you could not draw one much better. The size of his calves rib eye measurements show you that Red Dawg sires sons and daughters with a lot of muscle. Come and have a look at this guys length of body, muscle structure, and next extension.

Pen 1



Lot 7



Lot 8

**8**  **LMG GILLS RED DAWG 7639**  
**May 12, 2007** **1212307**

WR Mr. Red Dawg 5335  
1046249

BUF CRK Valentino N031  
TMAS Ms Fortune 114

LMG Miss Maiden 4115  
1009564

BIEBER Red Moon 6042  
LMG Miss Maiden 2010

BW	WW	YW	MILK	TM	STAY	MARB	RE	BF
2.3	52	94	24	50	13	-.08	.14	.01

Retaining ¼ semen interest

**BW: 85 lbs**  
**WW: 785 lbs**  
**REA/CWT: 1.19 square inches**  
**REA Size Ratio: 109**

WOW, take a look here at this guy's style, length, muscle, and numbers. He puts everything into place here. Plus he has a lot of class, and should really be on a halter. If the right guy owned this guy, he could go to Denver and be in the winner circle, as he is that good. 7639 is one of those bulls that just knows he is good, as he has a real long extended neck, square made and travels great, walking around saying hey, look at me! Plus, he is out of an awesome cow line. His dam has a 109 MPPA and is a grand daughter of the great LMG Miss Maiden 023. His grand dam has a 105 MPPA while his great grand dam has a 106 MPPA! This maternal power comes from her pedigree, as she is double bred LMG Daorv 841. Maiden 023 is a current donor cow for us and this spring we sold 8 sons and averaged \$4530 on them with the high selling going for \$5500 and the lowest selling for \$3000. They were all real consistent and good. This is a strong cow line and a powerful bull line. The combination is the real deal, and he will do his knew owner a lot of good, whoever gets him bought, as he will work in any program in the country!  
 Pen 1

**9**  **LMG GILLS BIG DAWG 7561**  
**May 25, 2007** **1212211**

WR Mr. Red Dawg 5335  
1046249

BUF CRK Valentino N031  
TMAS Ms Fortune 114

LMG Star 916  
669915

LMG Loaded 0356  
LMG Star 459

BW	WW	YW	MILK	TM	STAY	MARB	RE	BF
2.3	43	75	14	36	13	-.04	.20	.01

Retaining ¼ semen interest

**BD: 05/17/2007**  
**BW: 88 lbs**  
**WW: 704 lbs**  
**REA/CWT: 1.14 square inches**  
**REA Size Ratio: 112**

Here he is, the most complete Red Dawg son in the sale. He is one of the deepest ribbed, longest made, and thickest rear quartered bulls we have ever raised! He is good enough for any registered or commercial ranch in the country. You need to come and have a look at him and see what he really is! If we could raise all our bulls to look like this guy, we would. Red Dawg is doing an awesome job and when you see these sons, you will end up owning some, and this guy will be at the top of your list! He gets all of his extra body from his maternal grand dam, LMG Star 459. When she was alive, she was the biggest bodied, easiest keeping cow we owned. Just imagine what his daughters and steer calves will look like. We are now in a time in the beef industry where you will see price differences between top quality cattle and average cattle. The spread will only get bigger and bigger, so why not be on top of that spread and use the absolute best bulls you can. This guy will set you apart. Oh ya, his calves will be outstanding in carcass as well. It doesn't happen very often that you get both good marbling and rib eye, but you do with this guy. He scanned as good as one could hope for with a 108 ratio for Marbling and a 110 ratio for rib eye, where he measured 1.19 square inches of rib eye per hundred pounds of body weight. So if you retain interest in your calves, this guy will do it all, they will gain as good or better than the rest and they will grade higher as well. Come get him.  
 Pen 2



Lot 9



Lot 10

**10**  **LMG GILLS RED DAWG 7643**  
**May 20, 2007** **1212236**

WR Mr. Red Dawg 5335  
1046249

BUF CRK Valentino N031  
TMAS Ms Fortune 114

LMG Roxie 1061  
783371

HLH Buster 406 603  
LMG Roxie 650

BW	WW	YW	MILK	TM	STAY	MARB	RE	BF
3.4	50	90	16	41	15	-.06	.20	.00

**BW: 95 lbs**  
**WW: 753 lbs**  
**REA/cwt: 1.21 square inches**  
**REA Size Ratio: 121**

Here is Dad's favorite bull in the sale! He is very powerful, long made, a bit bigger framed, and very thick! He has a lot of style and muscle. He has a weaning ratio of 114 a yearling ratio of 117, and a rib eye ratio of 121! Talk about performance from one end to the other. He has a super dam as well, she has a 101 MPPA while his great grand dam has a 105 MPPA. Good genetics all the way around here. Take advantage of this excellent bull!!  
 Pen 2

Retaining 1/4 semen interest

**11**  **LMG GILLS BIG DAWG 7554**  
**May 14, 2007** **1212198**

WR Mr. Red Dawg 5335  
1046249

BUF CRK Valentino N031  
TMAS Ms Fortune 114

LMG Velma 225-840  
629271

BUF CRK Barney 3474  
LMG Velma 225

BW	WW	YW	MILK	TM	STAY	MARB	RE	BF
3.9	53	90	15	42	14	-.07	.17	.00

Retaining 1/4 semen interest



Dam to Lot 11



Maternal Sister to Lot 11

**BW: 88 lbs**  
**WW: 763 lbs**  
**REA/cwt: 1.14 square inches**  
**REA Size Ratio: 108**

OK, here is another excellent bull that is out of an outstanding cow! Take a look at his dams and sisters photos and then study the bull himself. Wouldn't you love to have a herd of females that look like these two. 7554 is as deep of a bull that you will find. He isn't a pretty bull but he is a good bull that has a lot of muscle as well. His dam has a 107 MPPA and his daughters will be just the same.  
 Pen 2

**12**  **LMG GILLS RED DAWG 7604**  
**May 29, 2007** **1212291**

WR Mr. Red Dawg 5335  
1046249

BUF CRK Valentino N031  
TMAS Ms Fortune 114

LMG Susett 4031  
968447

VGW Rattler 908  
LMG Srsett 45-865

BW	WW	YW	MILK	TM	STAY	MARB	RE	BF
2.3	48	86	13	37	13	-.09	.19	.00

**BW: 80 lbs**  
**WW: 683 lbs**

7604 is another top Red Dawg son that needs some attention, and I bet he will get it sale day, as he is a powerful bull, and it is no wonder as he is a grandson of Rattler 908.  
 Pen 2



Lot 12

**13**  **LMG GILLS ACCELERATOR 7587**  
**May 15, 2007** **1212226**

BW: 94 lbs  
 WW: 707 lbs  
 REA/cwt: 1.31 square inches  
 REA Size Ratio: 123  
 Category II

Here is a very classy made bull that grabs your eye every time you walk in the pen. He has a lot of muscle to go along with it, but his strong point is his length, as he is as long as any other bull in the sale. He does have scurrs, but don't let that bother you, as his calves will still be polled and have the awesome look that he has.  
 Pen 2

- PIE Accelerator 4028  
979303
- PERKS Advance 121R  
PIE Ms Dinero 1035
- LMG Roxie 072  
745236
- LMG Reload 2957  
LMG Roxie 660

BW	WW	YW	MILK	TM	STAY	MARB	RE	BF
3.0	29	56	13	27	10	-.02	.29	-.01



Lot 13

**14**  **LMG GILLS COMBO 7578**  
**April 28, 2007** **1212344**

- MLK CRK Combination 4149  
987155
- LSF Combination A301M  
BJR Sun Gal 4X-561
- LMG Miss Sara 5057  
1068593
- SRN Heavens Door 2095  
LMG Sara 932

BW	WW	YW	MILK	TM	STAY	MARB	RE	BF
2.6	43	77	13	35	13	.05	.06	.00

BW: 89 lbs  
 WW: 729 lbs  
 IMF Ratio: 123  
 REA/CWT: 1.04 square inches  
 REA Size Ratio: 106

7578 is another typical Combination son, classy and thick. Check him out. Now look at what he has done. Here are his ratios, WW: 112 YW: 114 Marbling: 123 and Rib Eye: 106. How often do you see a bull that has done all of this.  
 Pen 2



Lot 14

**15**  **LMG GILLS COMBO 7633**  
**May 10, 2007** **1212464**

BW: 75 lbs  
 WW: 628 lbs  
 IMF Ratio: 126  
 REA/CWT: 1.19 square inches  
 REA Size Ratio: 105

7633 is a negative birth weight EPD bull that has a calving ease, maternal, and performance pedigree. His sire Combination, grand sire Bond, and great grand sire Monu 4X have all been used on heifers here at Gill Red Angus, while his grand sire Rattler 908 is stacked full of performance. More great genetics for you to choose from.  
 Pen 2

- MLK CRK Combination 4149  
987155
- LSF Combination A301M  
BJR Sun Gal 4X-561
- LMG Miss Fire 5136  
1068616
- NSF Bond L007  
LMG Miss Fire 3020

BW	WW	YW	MILK	TM	STAY	MARB	RE	BF
-2.0	26	54	12	25	13	.16	-.11	-.01



Lot 16

**16**  **LMG GILLS ADDICTION 7605**  
**May 17, 2007** **1212361**

BW: 96 lbs  
 WW: 732 lbs  
 IMF Ratio: 103  
 REA/CWT: 1.09 square inches  
 REA Size Ratio: 109

Here is one of the most powerful Addiction sons we have ever raised. He is full of body and muscle. I really like the bull and I think you will too. He is out of a great cow that has a 105 MPPA. His daughters should be your top cows.  
 Pen 2

- DKK Addiction N10  
923316
- BJR JR 107  
DKK Dixie 901
- LMG Miss Stephanie 5139  
1068619
- LMG Gills Horizon 1551  
LMG Stephanie 3029

BW	WW	YW	MILK	TM	STAY	MARB	RE	BF
2.1	32	47	25	41	12	-.01	.03	-.01



Lot 17

**17**  **LMG GILLS RAMBLER 7645**  
**May 5, 2007** **1212293**

OHRR 10H Dakota Rambler 75R    OHRR Dakota Copper 29K  
 1025344                                      OHRR Ms Scarlett 10H

LMG Roxie 4037                                      VGW Rattler 908  
 968459    LMG Roxie 915

BW	WW	YW	MILK	TM	STAY	MARB	RE	BF
3.3	39	62	15	35	11	-.08	.07	-.01

Retaining 1/4 Semen Interest!

**BW: 65 lbs**  
**WW: 628 lbs**  
**REA/CWT: 1.12 square inches**

This is a top son of OHRR Rambler 75R and one of Kenny's favorite bulls in the sale. He is very soggy made and pretty moderate in frame. But not only is he moderate framed, but he is very deep and thick made. He will make you some top daughters that won't take much feed. We purchased this guy's daddy from OHR Red Angus, ND with the idea of getting good bulls and great daughters. Well so far, he has done the good bull part. His first daughters got bred this summer, and I have high hopes for them. This guy is real complete made and will do you a lot of good. Take a look at his photo and think about all the real big cows you have that he would bring down in size and make your herd more even than ever. He is the real deal.  
 Pen 3

**18**  **LMG GILLS MAJOR 7618**  
**May 13, 2007** **1212189**

PKS Major 472P                                      LCC Major League A502M  
 959988    BUF CRK Lass M275

MISS N30-T55                                      LTD Band 1206-SHO1091  
 572116    TDT Miss K58 N30

BW	WW	YW	MILK	TM	STAY	MARB	RE	BF
-.3	29	48	16	31	11	-.01	.29	.00

**BW: 88 lbs**  
**WW: 656 lbs**  
**REA/CWT: 1.35 square inches**  
**REA Size Ratio: 119**

7618 is a real good deep ribbed bull that is very easy doing. His daughters should be the same, as his dam is real deep bodied and easy keeping.  
 Pen 3



3/4 Sister To Lot 18's Dam

**19**  **LMG GILLS RED DAWG 7638**  
**June 5, 2007** **1212221**

WR Mr. Red Dawg 5335                                      BUF CRK Valentino N031  
 1046249    TMAS Ms Fortune 114

LMG Lydia 038    LMG Loaded 0356  
 745146    LMG Lydia 410

BW	WW	YW	MILK	TM	STAY	MARB	RE	BF
-0.1	37	71	17	36	13	-.08	.06	.01

**BW: 80 lbs**  
**WW: 658 lbs**  
**IMF Ratio: 112**  
**REA/cwt: .98 square inches**

The old girl did it again. His dam 038 always brings is a top calf and she didn't miss here. This guy is moderate framed, easy doing and has a lot of muscle just like all the other Red Dawg sons. 038 has a higher MPPA of 104.  
 Pen 3

**20**  **LMG GILLS RAMBLER 7615**  
**June 5, 2007** **1212200**

OHRR 10H Dakota Rambler 75R    OHRR Dakota Copper 29K  
 1025344                                      OHRR Ms Scarlett 10H

LMG Diann 67-848                                      LMG Gill Logan 0446  
 629279    LMG Diann 67

BW	WW	YW	MILK	TM	STAY	MARB	RE	BF
1.7	27	44	12	26	10	-.04	.15	-.01

**BW: 90 lbs**  
**WW: 579 lbs**  
**REA/cwt: 1.37 square inches**  
**REA Size Ratio: 108**

7615 is another top Rambler son that is moderate made and easy keeping. His sons will be efficient and his daughters will be moderate and easy doing. Don't miss this one!  
 Pen 3



Lot 20

**21**  **LMG GILLS HEAVENS DOOR 7573**  
**June 9, 2007** **1212230**

SRN Heavens Door 2095 LCHMN Hevn's Sake 1002F  
 830626 LCHMN Eleanor J1266

LMG Sara 015 HAMMEL Run Cloud 525  
 745299 LMG Sara 328-817

BW	WW	YW	MILK	TM	STAY	MARB	RE	BF
2.4	49	85	20	45	13	-.03	.06	.01



Dam to Lot 21

**BW: 80 lbs**  
**WW: 806 lbs**  
**IMF Ratio: 111**  
**REA/cwt: 1.04 square inches**  
**REA Size Ratio: 101**

OK, here is the cow family we have all been waiting for! The great Sara cow line is now known all over the world and was developed right here at Gill Red Angus. This line is the line to get if you want easy doing, deep ribbed good feet and udders, and very efficient. They have it all. This bull is very good, not pretty, actually kind of ugly, but very deep, lots of muscle, great feet, gets fat on air, and will make you some awesome daughters. His maternal brother, LMG Gills Monument 4562, was sold to Bull Hill Ranch, SC and McLean Red Angus, GA which we are also using in our own program, and they are very easy doing cattle with a lot of muscle and depth. If you are serious about making some easy doing daughters, don't miss out on this guy! Oh ya, check out his ratios of birth: 93, weaning: 122, yearling: 114, marbling: 111, and rib eye: 101. Plus his EPDs are as good as they get. He has it all.

Pen 3

Retaing 1/4 Semen Interest!



Grand Dam to Lot 21

**22**  **LMG GILLS RAMBLER 7636**  
**May 26, 2007** **1212315**

OHRR 10H Dakota Rambler 75R OHRR Dakota Copper 29K  
 1025344 OHRR Ms Scarlett 10H

LMG Miss Mtx 4125 NSF Bond L007  
 1009601 LMG Miss MTX 2045

BW	WW	YW	MILK	TM	STAY	MARB	RE	BF
2.4	35	68	19	36	13	.01	-.06	-.01

**BW: 86 lbs**  
**WW: 663 lbs**  
**IMF Ratio: 120**  
**REA/CWT: 1.03 square inches**

Here is another real good bull that has a lot of things going for him. His strongest value is his maternal cow line. His great grand dam is LMG Miss MTX 830, and she did an outstanding job for us and left us with several daughters and grand daughters. His daughters will be great. Check out LMG MTX 830's photo by Lot 33.

Pen 3

**23**  **LMG GILLS BIG DAWG 7602**  
**May 10, 2007** **1212215**

WR Mr. Red Dawg 5335 BUF CRK Valentino N031  
 1046249 TMAS Ms Fortune 114

LMG Thelma 942 LMG Heavenly 115  
 669941 LMG Thelma 770

BW	WW	YW	MILK	TM	STAY	MARB	RE	BF
2	37	67	13	31	12	-.07	.13	.01

**BW: 88 lbs**  
**WW: 615 lbs**  
**IMF Ratio: 110**  
**REA/cwt: 1.21 square inches**

7602 is another powerful Red Dawg son that is out of a top cow for us. Last year she had a top son that sold for \$5000. This guy is just as good and you need to have him.

Pen 3



Maternal Brother to Lot 23

**24**  **LMG GILLS GEMSTONE 7584**  
**May 10, 2007** **1212325**

BCRR Gemstone 346 BUF CRK Barney 3474  
 892629 SODAK Gem H8058

LMG Miss Roxie 5025 RBJR Advance A709  
 1068559 LMG Roxie 517

BW	WW	YW	MILK	TM	STAY	MARB	RE	BF
1	32	53	17	33	11	.01	-.08	-.01

**BW: 81 lbs**  
**WW: 633 lbs**  
**REA/CWT: 1.13 square inches**

Here is another good, moderate framed Gemstone son that will make some easy fleshing daughters.

Pen 3

**25**  **LMG GILLS MAXIMIZER 7552**  
**May 17, 2007** **1212188**

PIE Maximizer 5052 PIE Atlantic 2204  
 1029127 PIE Power Lady 9077

LMG Susett 681 LMG Reload 2957  
 538707 LMG Susett 1209-957

BW	WW	YW	MILK	TM	STAY	MARB	RE	BF
2.4	36	62	16	34	11	-.05	.16	-.02

**BW: 82 lbs**  
**WW: 659 lbs**  
**REA/cwt: 1.13 square inches**

Maximizer is a bull we purchased from Pieper Red Angus, NE to get a new line into our program. He sires some cattle with a lot of performance and body. This guy is just that, plus he is out of a 1996 model cow. His daughters should last a long time in your program.

Pen 3

**26**  **LMG GILLS ACCELERATOR 7556**  
**June 25, 2007** **1212287**

PIE Accelerator 4028  
979303

PERKS Advance 121R  
PIE Ms Dinaro 10

LMG Marie 4015  
968412

SRN Heavens Door 2095  
LMG 780 070

BW	WW	YW	MILK	TM	STAY	MARB	RE	BF
2.2	27	58	8	22	11	-.01	.16	.00

**BW: 86 lbs**  
**WW: 663 lbs**  
**REA/CWT: 1.10 square inches**

This Accelerator is a good bull that goes back to Heavens Door on the maternal end. He had a maternal brother sell last year for \$3,250.

Pen 3



Maternal Brother to Lot 26

**29**  **LMG GILLS MAXIMIZER 7609**  
**May 7, 2007** **1212274**

PIE Maximizer 5052  
1029127

PIE Atlantic 2204  
PIE Power Lady 9077

LMG Marcia 3001  
912588

VGW Chateau 128  
LMG Marcia 687-808

BW	WW	YW	MILK	TM	STAY	MARB	RE	BF
3.1	46	74	22	45	11	-.01	.06	-.01

**BW: 90 lbs**  
**WW: 776 lbs**  
**IMF Ratio: 118**  
**REA/cwt: .95 square inches**

Here is Mr. Power! He weaned off at nearly 800 lbs and never quit. He is big, stout, deep, long, and will add a lot of pounds to your next calf crop. You better take a good look at him as he will work. Also, check out his dams photo, she is a super cow with a lot of class and performance.

Pen 4

Retaining 1/4 semen interest



Lot 29



Dam to Lot 29

**27**  **LMG GILLS BIG DAWG 7625**  
**May 14, 2007** **1212213**

WR Mr. Red Dawg 5335  
1046249

BUF CRK Valentino N031  
TMAS Ms Fortune 114

LMG Dynette 936  
669935

LARSON Red Sky 539  
LMG Dynette 212

BW	WW	YW	MILK	TM	STAY	MARB	RE	BF
3.2	45	79	14	36	12	-.05	.16	.01

**BW: 95 lbs**  
**WW: 663 lbs**  
**IMF Ratio: 115**  
**REA/cwt: 1.20 square inches**  
**REA Size Ratio: 104**

These Red Dawg sons do it all. They all have huge rib eye measurements, style, muscle, and length. This guy measured 1.20 square inches of REA per cwt! Wow that is pure muscle. If you need to add some muscle to your program, get a Red Dawg son, he will solve all your muscle problems.

Pen 4

**30**  **LMG GILLS MAX 7627**  
**May 7, 2007** **1212460**

PIE Maximizer 5052  
1029127

PIE Atlantic 2204  
PIE Power Lady 9077

LMG Miss Sara 4130  
1009587

NSF Bond L007  
LMG Miss Sara 2057

**BW: 85 lbs**  
**WW: 725 lbs**  
**REA/CWT: 1.08 square inches**  
**REA Size Ratio: 107**

Here is another good Maximizer son with a lot of pure power.

Pen 4

BW	WW	YW	MILK	TM	STAY	MARB	RE	BF
1.4	42	76	20	41	11	-.11	.19	-.02

**28**  **LMG GILLS RED DAWG 7599**  
**May 25, 2007** **1212296**

WR Mr. Red Dawg 5335  
1046249

BUF CRK Valentino N031  
TMAS Ms Fortune 114

LMG Lark 4042  
968469

VGW Chateau 128  
LMG Lark 952

BW	WW	YW	MILK	TM	STAY	MARB	RE	BF
2.2	45	84	19	36	14	-.15	.30	.01

**BW: 86 lbs**  
**WW: 723 lbs**  
**REA/CWT: 1.23 square inches**  
**REA Size Ratio: 118**

7599 is another good Red Dawg son that really got it done.

Pen 4



Lot 30

**31**  **LMG GILLS MAXIMIZER 7583**  
**May 20, 2007** **1212465**

PIE Maximizer 5052 1029127  
 PIE Atlantic 2204  
 PIE Power Lady 9077

LMG Pottet 3053 912647  
 SRN Heavens Door 2095  
 LMG 780 070

BW	WW	YW	MILK	TM	STAY	MARB	RE	BF
2.9	42	69	16	38	12	-.09	.15	-.02

**BW: 85 lbs**  
**WW: 656 lbs**  
**REA/cwt: 1.06 square inches**  
 These Maximizer bulls are all the same, big, stout, powerful, and full of rib eye, plus the daughters should be good as his dam has a 110 MPPA!  
 Pen 4

**32**  **LMG GILLS RAMBLER 7575**  
**May 22, 2007** **1212462**

OHRR 10H Dakota Rambler 75R 1025344  
 OHRR Dakota Copper 29K  
 OHRR Ms Scarlett 10H

LMG Miss Brandy 2051 864336  
 BADLANDS Mr Beef 805  
 LMG Miss Brandy 58

BW	WW	YW	MILK	TM	STAY	MARB	RE	BF
3.5	40	71	15	35	12	-.02	.06	-.01

**BW: 94 lbs**  
**WW: 699 lbs**  
**IMF Ratio: 133**  
**REA/cwt: 1.07 square inches**  
**REA Size Ratio: 101**  
 Here is a real good Rambler son. Ramblers dam is the main reason we purchased him, as she is an outstanding cow. OHR sold her in their cow sale last year to Six Mile Red Angus of Canada for \$18,500. She has a perfect udder and is real deep made with super feet.  
 Pen 4

**33**  **LMG GILLS COMBO 7564**  
**June 1, 2007** **1212377**

MLK CRK Combination 4149 987155  
 LSF Combination A301M  
 BJR Sun Gal 4X-561

LMG Miss MTX 5021 1068555  
 DKK Addiction N10  
 LMG MTX 062

BW	WW	YW	MILK	TM	STAY	MARB	RE	BF
-.1	38	68	22	41	13	.06	.04	-.01

**BW: 80 lbs**  
**WW: 796 lbs**  
**IMF Ratio: 105**  
**REA/CWT: 1.07 square inches**  
**REA Size Ratio: 111**

Here is a real good Combination son that is out of another real good first calf heifer that has a 109 MPPA and again goes back to the great LMG Miss MTX 830. This cow line works and it will for you too.  
 Pen 4



Maternal Great Grand Dam to Lot 33

**34**  **LMG GILLS GEMSTONE 7616**  
**May 17, 2007** **1212350**

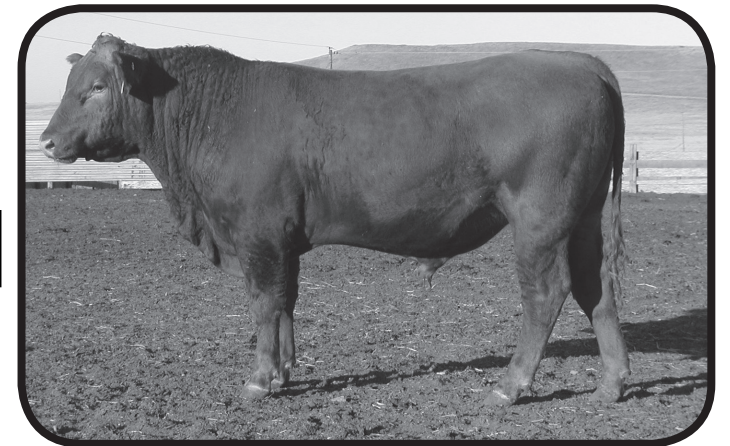
BCRR Gemstone 346 892629  
 BUF CRK Barney 3474  
 SODAK Gem H8058

LMG Miss Star 5071 1068605  
 LCC Tassel Executive61J  
 LMG Star 1052

BW	WW	YW	MILK	TM	STAY	MARB	RE	BF
4.7	40	62	21	41	11	-.08	.14	-.01

**BW: 94 lbs**  
**WW: 695 lbs**  
**REA/CWT: 1.20 square inches**  
**REA Size Ratio: 112**

This Gemstone calf will grab your eye sale day. He has done a good job all the way through with ratios of 106 for weaning and 105 for yearling. Plus his dam has a 102 MPPA.  
 Pen 4



Lot 34  
 3/4 Brother to Lots 35 & 36

**35**  **LMG GILLS GEMSTONE 7613**  
**May 22, 2007** **1212339**

BCRR Gemstone 346 892629  
 BUF CRK Barney 3474  
 SODAK Gem H8058

LMG Miss Susette 5043 1068583  
 LCC Tassel Executive61J  
 LMG Srsett 45-865

BW	WW	YW	MILK	TM	STAY	MARB	RE	BF
-.9	31	54	20	36	11	-.10	.08	-.01

**BW: 68 lbs**  
**WW: 698 lbs**  
**REA/CWT: 1.03 square inches**

7613 is a good stout bull that will work for you.  
 Pen 4

3/4 Brother to Lots 34 & 36



Maternal Grandsire to Lots 34, 35 & 36

**36**  **LMG GILLS GEMSTONE 7558**  
**June 1, 2007** **1212353**

BCRR Gemstone 346 892629  
 BUF CRK Barney 3474  
 SODAK Gem H8058

LMG Miss Lydia 5073 1068607  
 LCC Tassel Executive61J  
 LMG Lydia 2006

BW	WW	YW	MILK	TM	STAY	MARB	RE	BF
.9	35	58	24	42	11	-.08	.01	-.01

**BW: 74 lbs**  
**WW: 672 lbs**  
**REA/CWT: 1.06 square inches**

Here is another good Gemstone bull that looks just like the last guy. His dam has a 101 MPPA and he will have some very good daughters for you to keep.  
 Pen 5

3/4 Brother to Lots 34 & 35

**37**  **LMG GILLS RAMBLER 7634**  
**May 29, 2007** **1212305**

OHRR 10H Dakota Rambler 75R OHRR Dakota Copper 29K  
 1025344 OHRR Ms Scarlett 10H

LMG Miss Roxie 4110 LMG Gills Monument 1504  
 1009556 LMG Roxie 1080

BW	WW	YW	MILK	TM	STAY	MARB	RE	BF
2.1	36	61	24	41	13	-.17	.11	-.01

**BW: 75 lbs**  
**WW: 693 lbs**  
**REA/CWT: 1.18 square inches**  
**REA Size Ratio: 102**

7634 is out of a real good Monument 1504 daughter that is full of body and with a super udder and has a 107 MPPA. Take a look at her photo and then ask yourself if you would like to have cows that look like her, if your answer is yes, come get this guy and make yourself some super cows! The daughters should be good, as his dam is on our future flush list while his grand dam and great grand dam have already been flushed.

Pen 5



Dam to Lot 37

**38**  **LMG GILLS HEAVENS DOOR 7553**  
**May 28, 2007** **1212303**

SRN Heavens Door 2095 LCHMN Hevn's Sake 1002F  
 830626 LCHMN Eleanor J1266

LMG Miss Brandy 4103 VGW Chateau 128  
 1009542 LMG Miss Brandy 162-881

BW	WW	YW	MILK	TM	STAY	MARB	RE	BF
2.4	39	66	14	33	13	-.18	.07	.01

**BW: 75 lbs**  
**WW: 669 lbs**  
**REA/CWT: 1.14 square inches**

Here is one of the last Heavens Door sons you will be able to get, as the bull is gone and we only have a limited amount of semen left on him. Here is a great opportunity for you.

Pen 5

**39**  **LMG GILLS MAXIMIZER 7647**  
**May 10, 2007** **1212272**

PIE Maximizer 5052 PIE Atlantic 2204  
 1029127 PIE Power Lady 9077

LMG Susett 3023 LMG Gills Monument 1504  
 912580 LMG Susett 681

BW	WW	YW	MILK	TM	STAY	MARB	RE	BF
2.0	33	60	20	37	11	.00	.15	-.02

**BW: 91 lbs**  
**WW: 638 lbs**  
**IMF Ratio: 137**  
**REA/cwt: 1.14 square inches**

7647 is another good Maximizer son that will add a lot of pounds to your next calf crop.

Pen 5



Lot 39

**40**  **LMG GILLS HORIZON 7555**  
**May 26, 2007** **1212320**

LMG Gills Horizon 1551 LMG Gill Horizon 5379  
 783396 LMG Lydia 727

LMG Miss MTX 4307 BADLANDS Mr Beef 805  
 1026100 LMG MTX 715

BW	WW	YW	MILK	TM	STAY	MARB	RE	BF
00	31	54	17	32	10	-.09	-.03	-.01

**BW: 78 lbs**  
**WW: 682 lbs**  
**REA/CWT: 1.22 square inches**  
**REA Size Ratio: 110**

This Horizon son has a lighter birth weight and still weaned off nearly 700 lbs.

Pen 5



Full Sister to Lot 40's Dam

**41**  **LMG GILLS RED DAWG 7574**  
**May 19, 2007** **1212227**

WR Mr. Red Dawg 5335 BUF CRK Valentino N031  
 1046249 TMAS Ms Fortune 114

LMG MTX 019 LMG Dakota Coyote 1117  
 745252 LMG MTX 715

BW	WW	YW	MILK	TM	STAY	MARB	RE	BF
3.6	47	82	16	39	13	-.04	.17	.00

**BW: 85 lbs**  
**WW: 747 lbs**  
**IMF Ratio: 107**  
**REA/cwt: 1.20 square inches**  
**REA Size Ratio: 101**

This guy is under average for birth weight and above average for weaning. Just what we all love. His grand dam is a past donor cow for us and his daddy is the powerful Red Dawg.

Pen 5



Dam to Lot 41

**42**  **LMG GILLS RED DAWG 7631**  
**May 31, 2007** **1212247**

WR Mr. Red Dawg 5335 BUF CRK Valentino N031  
 1046249 TMAS Ms Fortune 114

LMG Miss Lydia 5073 BJR Monu 4X-303  
 1068607 LMG 167-876

BW	WW	YW	MILK	TM	STAY	MARB	RE	BF
2.3	47	84	12	35	15	-.09	.15	-.01

**BW: 86 lbs**  
**WW: 650 lbs**  
**IMF Ratio: 104**  
**REA/cwt: 1.16 square inches**  
**REA Size Ratio: 101**

These Red Dawg sons just don't quit coming. The more there are, the more impressed you will be by the old boy. Check them out!

Pen 5

**43**  **LMG GILLS RED DAWG 7595**  
**June 15, 2007** **1212317**

WR Mr. Red Dawg 5335      BUF CRK Valentino N031  
 1046249                      TMAS Ms Fortune 114

LMG Miss Diann 4105      VGW Chateau 128  
 1009593                      LMG Diann 445-895

BW	WW	YW	MILK	TM	STAY	MARB	RE	BF
2.3	45	87	17	39	14	-.04	.21	.01

**BW: 82 lbs**  
**WW: 690 lbs**  
**IMF Ratio: 115**  
**REA/CWT: 1.13 square inches**  
**REA Size Ratio: 105**

If you missed the last few Red Dawg sons, here is your chance to get one.

Pen 6



Maternal Brother to Lot 43

**44**  **LMG GILLS ACCELERATOR 7601**  
**May 10, 2007** **1212314**

PIE Accelerator 4028      PERKS Advance 121R  
 979303                      PIE Ms Dinaro 1035

LMG Miss Rambo 4137      LCC Vaquero 1412J  
 1009594                      STRAKA'S Ms Rambo 7542

BW	WW	YW	MILK	TM	STAY	MARB	RE	BF
1.8	28	58	13	27	10	-.10	.00	.00

**BW: 80 lbs**  
**WW: 661 lbs**  
**REA/CWT: 1.12 square inches**

Alright, this boy's dam is a full sister to a top bull we sold a few years ago to Dan Materi, ND. Dan loves the bull and this girl is a very stylish cow with a lot of milk and body.

Pen 6



Grand Dam to Lot 44

**45**  **LMG GILLS HEAVENS DOOR 7626**  
**May 28, 2007** **1212250**

SRN Heavens Door 2095      LCHMN Hevn's Sake 1002F  
 830626                      LCHMN Eleanor J1266

LMG Miss Welma 2048      VGW Rattler 908  
 864385                      LMG Welma 9010

BW	WW	YW	MILK	TM	STAY	MARB	RE	BF
4.2	48	82	12	36	11	-.11	.21	.00

**BW: 79lbs**  
**WW: 675 lbs**  
**REA/cwt: 1.30 square inches**  
**REA Size Ratio: 112**

Another top Heavens Door son that is stacked full of middle and muscle. Check out his REA! He measured 1.30 square inches of REA per cwt!!! That is absolutely huge. OHR Red Angus purchased his grand dam LMG Wellma 9010 at the Santa Sale last winter.

Pen 6

**46**  **LMG GILLS ACCELERATOR 7588**  
**June 16, 2007** **1212212**

PIE Accelerator 4028      PERKS Advance 121R  
 979303                      PIE Ms Dinaro 1035

LMG SARA 932              LMG Loaded 0356  
 669931                      LMG Sara 520

BW	WW	YW	MILK	TM	STAY	MARB	RE	BF
2.8	25	48	12	26	10	-.06	.14	.00

**BW: 82 lbs**  
**WW: 682 lbs**  
**REA/cwt: 1.13 square inches**  
**REA Size Ratio: 101**

A real good bull out of a very good cow that has a 105 MPPA.  
 Pen 6



Paternal Grand Dam to Lots 47 & 48

**47**  **LMG GILLS COMBO 7608**  
**May 14, 2007** **1212372**

MLK CRK Combination 4149      LSF Combination A301M  
 987155                      BJR Sun Gal 4X-561

LMG Miss Lass 5059      VGW Rattler 908  
 1068693                      LMG Lass 939

BW	WW	YW	MILK	TM	STAY	MARB	RE	BF
0	28	55	9	23	13	.07	-.08	-.01

**BW: 84 lbs**  
**WW: 608 lbs**  
**IMF Ratio: 123**  
**REA/CWT: 1.04 square inches**

These Combination sons are really getting it done. His sires offspring feet are as perfect as they can get. We had a visitor this summer that thought his feet had been trimmed, but in all honesty, we don't ever touch feet unless they have been injured. He is a foot fixer!

Pen 6

**48**  **LMG GILLS COMBO 7649**  
**May 21, 2007** **1212365**

MLK CRK Combination 4149      LSF Combination A301M  
 987155                      BJR Sun Gal 4X-561

LMG Miss Stormy 5154      LCC Tassel Executive61J  
 1068624                      LMG Stormy 3081

BW	WW	YW	MILK	TM	STAY	MARB	RE	BF
0.1	32	65	16	32	13	.03	-.03	-.01

**BW: 82 lbs**  
**WW: 671 lbs**  
**REA/CWT: .97 square inches**

7649 is another good Combination son that has all the numbers put into the right place.

Pen 6



Lot 48

**49**  **LMG GILLS RAMBLER 7597**  
**June 3, 2007** **1212209**

**BW: 84 lbs**  
**WW: 656 lbs**  
**IMF Ratio: 115**  
**REA/cwt: 1.15 square inches**  
**REA Size Ratio: 101**

The Rambler sons are all deep ribbed and soggy made. They will make you some easy doing daughters and very good doing steer calves.  
 Pen 6

OHRR 10H Dakota Rambler 75R  
1025344  
 OHRR Dakota Copper 29K  
OHRR Ms Scarlett 10H  
 LMLG Georgia 914  
669913  
 LMG Loaded 0356  
LMG Georgia 434

BW	WW	YW	MILK	TM	STAY	MARB	RE	BF
3.4	33	55	18	34	10	-.04	.10	.00



Sire of Lots 49 & 50 - Rambler as a Yearling

**50**  **LMG GILLS RAMBLER 7560**  
**June 7, 2007** **1212229**

**BW: 78 lbs**  
**WW: 669 lbs**  
**REA/cwt: 1.14 square inches**

Here is another Rambler son that is out of a top Run Cloud daughter.  
 Pen 6

OHRR 10H Dakota Rambler 75R  
1025344  
 OHRR Dakota Copper 29K  
OHRR Ms Scarlett 10H  
 LMG Jessa 048  
745269  
 HAMMEL Run Cloud 525  
LMG Jessa 316-896

BW	WW	YW	MILK	TM	STAY	MARB	RE	BF
1.6	36	58	19	37	13	-.07	.00	.00

**51**  **LMG GILLS BIG DAWG 7563**  
**May 27, 2007** **1212374**



Dam to Lot 51

WR Mr. Red Dawg 5335  
1046249  
 BUF CRK Valentino N031  
TMAS Ms Fortune 114  
 LMG Marie 3011  
912500  
 VGW Rattler 908  
LMG Marie 48

BW	WW	YW	MILK	TM	STAY	MARB	RE	BF
1.5	45	84	13	36	13	-.07	.19	.00

**BD: 05/27/2007**  
**BW: 86 lbs**  
**WW: 666 lbs**  
**REA/cwt: 1.21 square inches**

Another top Red Dawg son that is out of an outstanding cow. Take a look at her photo. She is a typical Rattler daughter and is as impressive in person.  
 Pen 7

**52**  **LMG GILLS GEMSTONE 7559**  
**June 25, 2007** **1212378**

**BW: 81 lbs**  
**WW: 580 lbs**  
**REA/cwt: 1.13 square inches**

This real good Gemstone son comes from the same cow family that our \$10,500 LMG Gills Bond came from that Dan and Tara Hooper, NE purchased from us a few years back.  
 Pen 7

BCRR Gemstone 346  
892629  
 BUF CRK Barney 3474  
SODAK Gem H8058  
 LMG Miss Sara 5080  
1068572  
 SRN Heavens Door 2095  
LMG Miss Sara 2036

BW	WW	YW	MILK	TM	STAY	MARB	RE	BF
1.3	33	54	16	33	12	-.11	.05	-.01



Dam of SRN Heavens Door 2095

**53**  **LMG GILLS MAXIMIZER 7592**  
**May 21, 2007** **1212254**

**BW: 81 lbs**  
**WW: 641 lbs**  
**REA/cwt: 1.10 square inches**

If I was a looking for some bulls for this next breeding season, I would sure look at a group of 1/2 bothers like these Maximizer, Red Dawg, or Rambler bulls. Consistency always sells better and will add a few dollars per hundred weight on each calf, and just a \$3 increase on a 600 lbs calf is \$18 per calf or \$1500 a load.  
 Pen 7

PIE Maximizer 5052 1  
1029127  
 PIE Atlantic 2204  
PIE Power Lady 9077  
 LMG Miss Brandy 2064  
864400  
 RED CFCC 170K  
LMG Miss Brandy 940

BW	WW	YW	MILK	TM	STAY	MARB	RE	BF
0.6	31	49	20	35	10	-.07	.04	.00

**54**  **LMG GILLS HEAVENS DOOR 7569**  
**June 2, 2007** **1212302**

**BW: 80 lbs**  
**WW: 606 lbs**  
**IMF Ratio: 103**  
**REA/cwt: 1.08 square inches**

This guys dam is another good Rattler daughter. Rattler really ads a lot of power to the breed.  
 Pen 7

SRN Heavens Door 2095  
830626  
 LCHMN Hevn's Sake 1002F  
LCHMN Eleanor J1266  
 LMG Miss Jackie 4100  
1009537  
 VGW Rattler 908  
LMG Jackie 772

BW	WW	YW	MILK	TM	STAY	MARB	RE	BF
1.8	39	62	8	27	12	-.09	-.04	.00



Paternal Brother to Lot 54

**55**  **LMG GILLS HEAVENS DOOR 7648**  
**May 16, 2007** **1212286**

**BW: 96 lbs**  
**WW: 660 lbs**  
**IMF Ratio: 143**  
**REA/CWT: 1.11 square inches**  
 7648 is another deep made Heavens Door son out of a Rattler daughter. Pen 7

- SRN Heavens Door 2095      LCHMN Hevn's Sake 1002F  
830626                              LCHMN Eleanor J1266
- LMG Lydia 4009              VGW Rattler 908  
968403                              LMG Lydia 043

BW	WW	YW	MILK	TM	STAY	MARB	RE	BF
1.6	41	68	10	31	12	-.04	.06	.00



Maternal Grandsire to Lot 55 & 58

**56**  **LMG GILLS ADDICTION 7603**  
**May 13, 2007** **1212343**

**BW: 95 lbs**  
**WW: 690 lbs**  
**IMF Ratio: 109**  
**REA/CWT: .96 square inches**  
 You gotta love these Addiction sons, as they are all quite stylish and have enough muscle to get it done. Pen 7

- DKK Addiction N10              BJR JR 107  
923316                              DKK Dixie 901
- LMG Miss Georgia 5055      BCRR Gemstone 346  
1068591                              LMLG Georgia 914

BW	WW	YW	MILK	TM	STAY	MARB	RE	BF
2.1	31	45	25	40	11	-.01	-.05	-.01

**57**  **LMG GILLS MAXIMIZER 7610**  
**May 26, 2007** **1212252**



Paternal Grandsire to Lot 57

- PIE Maximizer 5052              PIE Atlantic 2204  
1029127                              PIE Power Lady 9077
- LMG Miss Roxie 2035              RED CFCC 170K  
864393                              LMG Roxie 917

BW	WW	YW	MILK	TM	STAY	MARB	RE	BF
1.0	30	50	20	35	10	-.08	.12	-.01

**BW: 91 lbs**  
**WW: 607 lbs**  
**REA/cwt: 1.28 square inches**  
 Here is another good Maximizer son to add to your load of bulls. Pen 7

**58**  **LMG GILLS ACCELERATOR 7635**  
**May 29, 2007** **1212261**

**BW: 87 lbs**  
**WW: 704 lbs-**  
**IMF Ratio: 101**  
**REA/cwt: .99 square inches**  
 7635 is a stylish, thick made bull that will do you a lot of good. He is solid made and eye appealing. Pen 7

- PIE Accelerator 4028              PERKS Advance 121R  
979303                              PIE Ms Dinaro 1035
- LMG Susett 3016                  VGW Rattler 908  
912510                              LMG Susett 069

BW	WW	YW	MILK	TM	STAY	MARB	RE	BF
2.2	29	57	11	25	10	-.01	.00	-.01

**59**  **LMG GILLS COMBO 7593**  
**May 1, 2007** **1212370**

- MLK CRK Combination 4149      LSF Combination A301M  
987155                              BJR Sun Gal 4X-561
- LMG Miss Lass 5158              LMG Gills Horizon 1551  
1068688                              LMG Lass 3101

BW	WW	YW	MILK	TM	STAY	MARB	RE	BF
0.2	25	48	10	22	13	.02	-.05	-.01

**BW: 87 lbs**  
**WW: 534 lbs**  
**IMF Ratio: 104**  
**REA/CWT: 1.34 square inches**  
**REA Size Ratio: 110**  
 Check out this guys REA Measurement of 1.34 square inches of REA per hundred pounds of body weight! Pen 7



Lot 59

**60**  **LMG GILLS EXECUTIVE 7621**  
**May 22, 2007** **1212279**

**BW: 81 lbs**  
**WW: 671 lbs**  
**IMF Ratio: 135**  
**REA/cwt: 1.25 square inches**  
**REA Size Ratio: 101**  
 Here is the only Executive son in the sale and he is a good one. His grand dam is the dam to LMG Gills Custer, which is a top calving ease bull for Select Sires. Pen 7

- LCC Tassel Executive 61J              LMAN Robin Hood 1174B  
662196                              TASSEL Lana 15A
- LMG Diann 3043                      RED CFCC 170K  
912627                              LMG Diann 908

BW	WW	YW	MILK	TM	STAY	MARB	RE	BF
2.2	32	55	23	39	10	.01	.17	-.01



Maternal Brother to Lot 60's Dam

**61**  **LMG GILLS MAXIMIZER 7572**  
**May 12, 2007** **1212264**

**BW: 95 lbs**  
**WW: 640 lbs**  
**IMF Ratio: 102**  
**REA/cwt: 1.16 square inches**  
 This is another big REA bull that measures 1.16 sq inches of REA per cwt!  
 Pen 8

- PIE Maximizer 5052      PIE Atlantic 2204  
1029127                      PIE Power Lady 9077
- LMG Miss Cinnamon 3064      HLH Buster 406 603  
912528                          LMG Miss Cinnamon

BW	WW	YW	MILK	TM	STAY	MARB	RE	BF
0.6	39	67	13	33	10	-.07	.05	-.02

**62**  **LMG GILLS GEMSTONE 7581**  
**May 17, 2007** **1212369**

**BW: 78 lbs**  
**WW: 696 lbs**  
**REA/CWT: 1.20 square inches**  
**REA Size Ratio: 106**  
 Here is a good numbered bull with a big rib eye. We are proud of our rib eye measurements, as they are weigh above the national average. Red Angus naturally has marbling, maternal, efficiency, and calving ease, and our herd has all of that, plus rib eye size, muscle, and performance. You need to be here to see what I am talking about..  
 Pen 8

- BCRR Gemstone 346      BUF CRK Barney 3474  
892629                      SODAK Gem H8058
- LMG Miss Roxie 5155      DKK Addiction N10  
1068686                      LMG Roxie 3086

BW	WW	YW	MILK	TM	STAY	MARB	RE	BF
-0.4	32	52	25	41	11	-.06	.08	-.01

**63**  **LMG GILLS RAMBLER 7589**  
**May 13, 2007** **1212244**



**Grand Dam to Lot 63 & 49**

- OHRR 10H Dakota Rambler 75R      OHRR Dakota Copper 29K  
1025344                                      OHRR Ms Scarlett 10H
- LMG Miss Sara 2036      VGW Rattler 908  
864348                                      LMG Sara 49-804

BW	WW	YW	MILK	TM	STAY	MARB	RE	BF
3.6	40	64	17	37	11	-.07	.09	-.01

**BW: 95 lbs**  
**WW: 671 lbs**  
**IMF Ratio: 102**  
**REA/cwt: 1.17 square inches**  
 This good bull is another grandson of LMG Sara 49, which was an udder fixing machine. Check out her photo.  
 Pen 8

**64**  **LMG GILLS GEMSTONE 7606**  
**May 5, 2007** **1212363**

**BW: 80 lbs**  
**WW: 614 lbs**  
**IMF Ratio: 104**  
**REA/CWT: 1.10 square inches**  
**REA Size Ratio: 109**  
 There are several Gemstone bulls to choose from here, so take a good hard look at this guy, he just may be the one you have been looking for.  
 Pen 8

- BCRR Gemstone 346      BUF CRK Barney 3474  
892629                      SODAK Gem H8058
- LMG Miss Cora 5150      DKK Addiction N10  
1068622                      LMG Cora 3059

BW	WW	YW	MILK	TM	STAY	MARB	RE	BF
-0.5	27	43	23	36	12	-.05	-.02	-.01



**Paternal Grand Sire to Lots 62, 64 & 65**

**65**  **LMG GILLS GEMSTONE 7646**  
**May 15, 2007** **1212322**

**BW: 77 lbs**  
**WW: 723 lbs**  
**IMF Ratio: 129**  
**REA/CWT: 1.07 square inches**  
 Look at the birth and weaning weight spread of 77 lbs to 723 lbs. What more could you want!?!?  
 Pen 8

- BCRR Gemstone 346      BUF CRK Barney 3474  
892629                      SODAK Gem H8058
- LMG Miss Lass 5014      SRN Heavens Door 2095  
1068548                      LMG 646 014

BW	WW	YW	MILK	TM	STAY	MARB	RE	BF
0.4	38	62	19	38	12	.00	-.05	-.01

**66**  **LMG GILLS ADDICTION 7637**  
**May 22, 2007** **1212359**

**BW: 81 lbs**  
**WW: 635 lbs**  
**REA/CWT: 1.09 square inches**  
 Here is a sleep easy type bull. We have used both his sire and maternal grand sire on heifers and had great luck.  
 Pen 8

- DKK Addiction N10      BJR JR 107  
923316                          DKK Dixie 901
- LMG Miss Susett 5135      LMG Gills Horizon 1551  
1068615                          LMG Susett 3016

BW	WW	YW	MILK	TM	STAY	MARB	RE	BF
-1.5	25	38	22	34	11	-.04	-.08	-.01

**67**  **LMG GILLS GEMSTONE**  
**May 15, 2007** **No Papers**

**BW: 85 lbs**  
**WW: 630 lbs**

Here is a real good Gemstone son. His dam is not registered due to poor office keeping, but don't worry as she is 100% Red Angus and a real good cow.  
 Pen 8

BCRR Gemstone 346 892629      BUF CRK Barney 3474 SODAK Gem H8058  
 LMG 5088      HLH Buster 406 603 Red Angus Cow

BW	WW	YW	MILK	TM	STAY	MARB	RE	BF
N/A	N/A	N/A	N/A	N/A	N/A	N/A	N/A	N/A

**68**  **LMG GILLS RED DAWG 7579**  
**May 12, 2007** **1212193**

WR Mr. Red Dawg 5335 1046249      BUF CRK Valentino N031 TMAS Ms Fortune 114  
 LMG Marcia 687-808 629239      LMG Heavenly 115 LMG Marcia 687

BW	WW	YW	MILK	TM	STAY	MARB	RE	BF
0.6	33	59	15	32	12	-.08	.12	.01

**BW: 84 lbs**  
**WW: 551 lbs**  
**IMF Ratio: 104**  
**REA/cwt: 1.34 square inches**  
**REA Size Ratio: 103**

Here is another real good carcass bull, as he has over 100 ratio on both REA and IMF!  
 Pen 8



Red Dawg's Dam

**69**  **LMG GILLS GEMSTONE 7567**  
**May 13, 2007** **1212364**

**BW: 80 lbs**  
**WW: 614 lbs**  
**REA/CWT: 1.25 square inches**  
**REA Size Ratio: 105**

This is another sleep easy type bull. When you look at this pedigree you will see Buster, DKK Addiction, and Gemstone. We used all three of the bulls on heifers and never had any trouble. Plus the females out of these bulls are real good cows.  
 Pen 8

BCRR Gemstone 346 892629      BUF CRK Barney 3474 SODAK Gem H8058  
 LMG Miss Cinnamon 5152 1068623      DKK Addiction N10 LMG Miss Cinnamon 3064

BW	WW	YW	MILK	TM	STAY	MARB	RE	BF
-1.0	28	45	19	33	12	-.14	-.01	-.02

**70**  **LMG GILLS MAXIMIZER 7614**  
**May 16, 2007** **1212248**

PIE Maximizer 5052 1029127      PIE Atlantic 2204 PIE Power Lady 9077  
 LMG Miss Susette 2043 864377      LMG Reload 2957 LMG Susett 670-884

BW	WW	YW	MILK	TM	STAY	MARB	RE	BF
1.4	32	53	17	33	10	-.04	.16	-.01

**BW: 91lbs**  
**WW: 632 lbs**  
**IMF Ratio: 123**  
**REA/cwt: 1.33 square inches**

7614 is the bull you need to use if you want to add a little marbling and REA to your program. He has a marbling ratio of 123, and measured 1.33 square inches of REA per cwt! That is very impressive stats, and coming out of such a good cow, only great things will happen.  
 Pen 8



Lot 70

**71**  **LMG GILLS COMBO 7565**  
**May 13, 2007** **1212434**

MLK CRK Combination 4149 987155      LSF Combination A301M BJR Sun Gal 4X-561  
 LMG Miss Sara 5151 1068682      LMG Gills Horizon 1551 LMG Sara 3063

BW	WW	YW	MILK	TM	STAY	MARB	RE	BF
-1.7	29	58	14	28	13	.03	-.11	-.01

**BW: 74 lbs**  
**WW: 616 lbs**  
**REA/CWT: 1.27 square inches**

7565 is out of the great Sara cow line and goes back to Horizon, Monu 4X, and is a son of Combination. We used all of these bulls on heifers and got along great. This is a strong calving ease line out of one of the absolute best cow lines available today.  
 Pen 9

**72**  **LMG GILLS GEMSTONE 7582**  
**May 8, 2007** **1212326**

DKK Addiction N10 923316      BJR JR 107 DKK Dixie 901  
 LMG Miss Susett 5135 1068615      LMG Gills Horizon 1551 LMG Susett 3016

BW	WW	YW	MILK	TM	STAY	MARB	RE	BF
0.7	28	41	19	33	11	.00	.01	-.01

**BW: 88 lbs**  
**WW: 624 lbs**  
**IMF Ratio: 107**  
**REA/CWT: 1.19 square inches**

These bulls in this part of the sale are a little more moderate made and full of calving ease sires. They may not be as powerful as some earlier, but they will be just what you are looking for.  
 Pen 9

# 73 LMG GILLS RED DAWG 7612

May 18, 2007 1212306

**BW: 86 lbs**  
**WW: 640 lbs**  
**IMF Ratio: 111**  
**REA/CWT: .95 square inches**  
 Check out this guys awesome spread of a 0 to 77 and a 20 milk and 40 total maternal.  
 Pen 9

WR Mr. Red Dawg 5335 1046249  
 BUF CRK Valentino N031  
 TMAS Ms Fortune 114  
 LMG Miss Lydia 4114 1009561  
 BIEBER Red Moon 6042  
 LMG Lydia 2006

BW	WW	YW	MILK	TM	STAY	MARB	RE	BF
0.3	41	77	20	40	13	-.06	-.02	.01

# 74 LMG GILLS HEAVENS DOOR 7617

May 30, 2007 1212260

**BW: 82 lbs**  
**WW: 652 lbs**  
**IMF Ratio: 114**  
**REA/cwt: 1.13 square inches**  
 This is another good numbered bull that has a high marbling ratio of 114.  
 Pen 9

SRN Heavens Door 2095 830626  
 LCHMN Hevn's Sake 1002F  
 LCHMN Eleanor J1266  
 LMG MARCIA 3010 912499  
 VGW Chateau 128  
 LMG Marcia 045

BW	WW	YW	MILK	TM	STAY	MARB	RE	BF
1.4	38	70	16	36	13	-.08	.02	.01

# 75 LMG RAMBLER 7640

May 14, 2007 1212218

OHRR 10H Dakota Rambler 75R 1025344  
 OHRR Dakota Copper 29K  
 OHRR Ms Scarlett 10H  
 LMG Lass 974 669973  
 LMG Loaded 0356  
 LMG Lass 226

BW	WW	YW	MILK	TM	STAY	MARB	RE	BF
4.2	41	64	16	36	11	-.04	.01	-.01

**BW: 90 lbs**  
**WW: 698 lbs**  
**IMF Ratio: 129**  
**REA/cwt: 1.18 square inches**

7640 weaned off at nearly 700 lbs and had a high IMF ratio of 129. Check him out!  
 Pen 9



Lot 75

# 76 LMG GILLS ACCELERATOR 7551

June 11, 2007 1212248

**BW: 80 lbs**  
**WW: 687 lb**  
**REA/cwt: 1.20 square inches**  
**REA Size Ratio: 104**  
 If we ever had a cow that made performance bulls after performance bulls that were correct in every way, it would be LMG Cora 998. It seems like she just gets it done year after year without making much noise. She does a great job quietly and so far she has earned a 106 MPPA. He is a more moderate framed bull, but loaded with middle and muscle.  
 Pen 9

PIE Accelerator 4028 979303  
 PERKS Advance 121R  
 PIE Ms Dinaro 1035  
 LMG Cora 998 669997  
 KINCHEN Sagebrush 487  
 LMG Cora 219

BW	WW	YW	MILK	TM	STAY	MARB	RE	BF
3.8	29	55	11	26	10	-.05	.16	.00



Rambler's Dam

# 77 LMG GILLS RAMBLER 7641

May 25, 2007 1212266

OHRR 10H Dakota Rambler 75R 1025344  
 OHRR Dakota Copper 29K  
 OHRR Ms Scarlett 10H  
 LMG Lark 3068 912535  
 BIEBER Red Moon 6042  
 LMG Lark 1039

BW	WW	YW	MILK	TM	STAY	MARB	RE	BF
1.4	33	56	18	34	10	-.05	.05	.00

**BW: 88 lbs**  
**WW: 649 lbs**  
**IMF Ratio: 114**  
**REA/cwt: 1.19 square inches**  
 This Rambler son did a nice job all year long and scanned great as well, having a 114 ratio for marbling.  
 Pen 9

# 78 LMG GILLS RAMBLER 7600

May 18, 2007 1212235

OHRR 10H Dakota Rambler 75R 1025344  
 OHRR Dakota Copper 29K  
 OHRR Ms Scarlett 10H  
 LMG Margo 1048 783344  
 LCHMN Grandcanyon 1244G  
 BGG Margo 547

BW	WW	YW	MILK	TM	STAY	MARB	RE	BF
2.1	35	60	19	36	14	-.03	.13	.01

**BW: 82 lbs**  
**WW: 673 lb**  
**IMF Ratio: 101**  
**REA/cwt: 1.20 square inches**  
**REA Size Ratio: 103**

OK, if I could make a cow look anyway I want, I would want her to look like this guys dam. Study her photo. She has every angle covered and has one of the best udders you will find. Keep all the daughters out of this guy since he is a son of 1048 and Rambler 75R. This is a great cross.  
 Pen 9



Dam to Lot 78

**79**  **LMG GILLS MAXIMIZER 7629**  
**May 5, 2007** **1212319**

BW: 72 lbs  
 WW: 651 lbs  
 REA/CWT: 1.14 square inches  
 Check out this great numbered bull.  
 Pen 9

PIE Maximizer 5052  
 1029127  
 LMG Miss Queen 4304  
 1026094  
 PIE Atlantic 2204  
 PIE Power Lady 9077  
 BADLANDS Mr Beef 805  
 LMG Queen 648

BW	WW	YW	MILK	TM	STAY	MARB	RE	BF
-.05	35	65	17	34	10	-.05	.15	-.01

**80**  **LMG GILLS ACCELERATOR 7642**  
**May 14, 2007** **1212201**

PIE Accelerator 4028  
 979303  
 LMG Bell 211-855  
 629286  
 PERKS Advance 121R  
 PIE Ms Dinaro 1035  
 Vgw Chateau 128  
 LMG Bell 211

BW	WW	YW	MILK	TM	STAY	MARB	RE	BF
2.8	26	49	9	22	11	.08	.07	.00

BW: 89 lbs  
 WW: 661 lbs  
 IMF Ratio: 109  
 REA/cwt: 1.15 square inches

Here is another good son out of a picture perfect cow. She is real classy, deep, and correct. This guy also has a 109 IMF ratio.  
 Pen 9



Dam to Lot 80

**81**  **LMG GILLS RAMBLER 7550**  
**June 24, 2007** **1212239**

OHRR 10H Dakota Rambler 75R  
 1025344  
 LMG Dianne  
 783441  
 OHRR Dakota Copper 29K  
 OHRR Ms Scarlett 10H  
 VGW Bonus 429  
 LMG Diann 682-814

BW	WW	YW	MILK	TM	STAY	MARB	RE	BF
2.5	30	44	14	29	13	-.04	.02	-.01

BW: 82 lbs  
 WW: 586 lbs  
 IMF Ratio: 111  
 REA/cwt: 1.22 square inches

7550 is another high marbling bull that you need to check out.  
 Pen 10



Maternal Brother to Lot 81

**82**  **LMG GILLS COMBO 7650**  
**May 8, 2007** **1212356**

BW: 76 lbs  
 WW: 605 lbs  
 REA/CWT: 1.28 square inches  
 Here is a good Combination son whose dam is a maternal sister to the good Lot 29 bull selling. A lot of calving eases is bred into this guys pedigree.  
 Pen 10

MLK CRK Combination 4149  
 987155  
 LMG Miss Marcia 5131  
 1068612  
 LSF Combination A301M  
 BJR Sun Gal 4X-561  
 LMG Gills Horizon 1551  
 LMG Marcia 3001

BW	WW	YW	MILK	TM	STAY	MARB	RE	BF
-2.2	22	46	14	25	13	.03	-.13	.00

**83**  **LMG GILLS COMBO 7576**  
**May 9, 2007** **1212345**

BW: 86 lbs  
 WW: 541 lbs  
 REA/CWT: 1.30 square inches  
 REA Size Ratio: 107  
 This bull came in a little lighter than most, but did a great job on grass over the summer.  
 Pen 10

MLK CRK Combination 4149  
 987155  
 LMG Miss Roxie 5058  
 1068594  
 LSF Combination A301M  
 BJR Sun Gal 4X-561  
 LMG Gills Buster 3512  
 LMG Roxie 938

BW	WW	YW	MILK	TM	STAY	MARB	RE	BF
0.6	22	50	8	19	13	-.04	-.06	-.01

**84**  **LMG GILLS ACCELERATOR 7623**  
**June 7, 2007** **1212270**

PIE Accelerator 4028  
 979303  
 LMG Diann 3076  
 912550  
 PERKS Advance 121R  
 PIE Ms Dinaro 1035  
 BJR Monu 4X-303  
 LMG Diann 1065

BW	WW	YW	MILK	TM	STAY	MARB	RE	BF
1.9	22	51	10	21	12	-.06	-.04	-.01

BW: 84 lbs  
 WW: 617 lbs  
 REA/CWT: 1 square inches  
 7623 will do a good job, just like he did on grass over the summer. Take him home sale day.  
 Pen 10



Grandsire to Lots 80, 84 & many others in this sale.

**85**  **LMG GILL RAMBLER 7644**  
**May 5, 2007** **1212292**

OHRR 10H Dakota Rambler 75R OHRR Dakota Copper 29K  
 1025344 OHRR Ms Scarlett 10H

LMG Roxie 4037 VGW Rattler 908  
 968459 LMG Roxie 915

BW	WW	YW	MILK	TM	STAY	MARB	RE	BF
3.3	39	62	15	35	11	-.08	.07	-.01

**BW: 60 lbs**  
**WW: 603 lbs**  
**REA/CWT: 1.30 square inches**

You will like this guy, as he is out of one of the top cow lines here, the Roxie cow line has done a super job. We have flushed three Roxie cows and are using 2 bulls out of the Roxie cow line. Here is your chance to get into a good cow family.  
 Pen 10

**86**  **LMG GILLS RED DAWG 7624**  
**June 19, 2007** **1212288**

WR Mr. Red Dawg 5335 BUF CRK Valentino N031  
 1046249 TMAS Ms Fortune 114

LMG Thelma 4020 GILCHRIST Coyote B225  
 968426 LMG Thelma 721

BW	WW	YW	MILK	TM	STAY	MARB	RE	BF
3.3	42	77	12	33	11	.00	.09	.00

**BW: 85 lbs**  
**WW: 613 lbs**  
**IMF Ratio: 130**  
**REA/CWT: 1.28 square inches**

Holy Cow! Look at that scan data, he has a marbling ratio of 130 and measured 1.28 square inches of rib eye per hundred pounds of body weight, that is unheard of!!! This Red Dawg son really knows how to get it done.  
 Pen 10

**87**  **LMG GILLS GEMSTONE 7591**  
**June 24, 2007** **1212360**

BCRR Gemstone 346 BUF CRK Barney 3474  
 892629 SODAK Gem H8058

LMG Miss Lydia 5138 LMG Gills Horizon 1551  
 1068618 LMG Lydia 3026

BW	WW	YW	MILK	TM	STAY	MARB	RE	BF
-0.4	43	69	27	48	12	-.09	-.05	-.01

**BW: 71 lbs**  
**WW: 906 lbs**

Wow, what a weaning weight!!  
 Pen 10



**A Barney Daughter**

**88**  **LMG GILLS MAXIMIZER 7607**  
**June 19, 2007** **1212225**

PIE Maximizer 5052  
 1029127

PIE Atlantic 2204  
 PIE Power Lady 9077

LMG Freyja 054  
 745185

PANHANDLE Atlas  
 LMG Freyja 426

BW	WW	YW	MILK	TM	STAY	MARB	RE	BF
2.1	33	54	15	31	10	-.06	.09	.00

**BW: 84 lbs**  
**WW: 619 lbs**  
**IMF Ratio: 108**  
**REA/cwt: 1.21 square inches**

7607's dam is one of those cows you see every time you go into her pasture. She is a great looking cow and just sticks out. She has done a good job as well having a 102 MPPA.  
 Pen 10



**Dam to Lot 88**

**89**  **LMG GILLS COMBO 7655**  
**May 13, 2007** **1212427**

MLK CRK Combination 4149  
 987155

LSF Combination A301M  
 BJR Sun Gal 4X-561

LMG Miss Star 5056  
 1068592

BCRR Gemstone 346  
 LMG Star 916

BW	WW	YW	MILK	TM	STAY	MARB	RE	BF
0.5	27	51	13	26	13	.07	-.05	.00

**BW: 84 lbs**  
**WW: 573 lbs**

7655 may be one of the best bulls selling, the only problem is, in August his dam died. So he was on his own from early August until mid October when we weaned all the other calves. He was an orphan and still weaned off at nearly 600 lbs. Just think what he would have done if he would have been able to have a mother like the rest of the calves. He would have most likely been closer to 800 lbs, and probably selling a lot closer to the front of the sale. His sire is the good footed Combination son. Now look at who his dam is. She is a maternal sister to the real powerful Lot 9 bull selling here. This will be the sleeper in the sale, and you can't afford to miss out on him.  
 Pen 10

**90**  **JEM KING JACK 743**  
**April 14, 2007** **1211121**

WRAF King Jr  
 889152

LMAN King Rob 8621  
 LONK Miss Jr J979

JEM Jackie 0115  
 822737

HLH Buster 406 603  
 LMG Jackie 959

BW	WW	YW	MILK	TM	STAY	MARB	RE	BF
0.8	35	67	19	36	14	-.11	.00	-.01

**BW: 72 lbs**  
**WW: 601 lbs**  
**REA/CWT: 1.30 square inches**

We purchased this guy as a cow/calf pair from McLean Red Angus, GA last year, but he does go back to a top cow line out of our program.  
 Pen 10



**A**  **Commercial Bred Heifers**  
**Lot A**

**Breeding Dates: May 17 to July 10**

80 head of Gill Red Angus owned heifers that were all purchased from both, Namken Red Angus, Lake Norden, SD and John Knutson, Quinn, SD, last fall and winter. These are both top-notch operations that buy the best bulls they can find. They were all summered on our grass near Firesteel, SD and will be brought home a few weeks before the sale so we can cake break them for their new owners.

**B**  **Commercial Bred Heifers**  
**Lot B**

**Breeding Dates: May 17 to July 10**

**Owned by: Fogalman Ranch, Opal, SD**

The Fogalman Ranch has been buying Gill Red Angus bulls exclusively now for over 15 years, and they always buy the very best and it is always out of the top pen. More times than not, Glen will call us up a day or two before the sale and tell us he needs a couple bulls and he will just give us some money to get the best bought. After the sale we call him back up and tell him we got him some and didn't even spend all his money. We are both happy and now you can see the results. These girls are flat out good!



We Know A Real Hero  
When We See One

**Wells Fargo Salutes The American Farmer**

You put food on our tables and energize our economy. And all you ask in return is a little sunshine, some timely rains and a fair price. Thank you for enriching our lives with your hard work.

**Mobridge** • 405 Main Street • (605) 845-3651

*"A little boy is the only thing God can use to make a man"*



# Mobridge Livestock Market

(605) 845-3622

(800) 658-3598

## Tom Anderberg

(605) 845-3702

(605) 845-6200

## Jason Anderberg

(605) 845-5440

(605) 845-0038

## Casey Perman

(605) 660-1775

## Tigh Anderberg

(605) 845-3484

(605) 845-4877

We are in the country every day and would like to visit with you about your cattle marketing needs.  
Cattle Sales Every Thursday. Horse Sales 1st Saturday of Every Month

# THE POWER OF....



Cattlemen know what to expect  
when you integrate great genetics!



Livestock Procurement  
& Sales Management

## What happens when you combine great companies?

- Marketing Efficiencies • Dynamic Sales Team
- Extensive Market Experience • Quality Catalogs
- Premier Advertising • Purchasing Power
- Strong Buyer Base • Quality Photography
- Comprehensive Mailing List

# Pifer's

AUCTION & REALTY

## Our Services Include:

Livestock Auction & Sales Management  
Consulting Services  
Auction Services  
Buy & Sell Cattle for Commercial & Purebred Breeders



# Locken Oil

Since 1960

Gas & Diesel Bulk Delivery &  
Convenience Store

Joe & Mandy Locken  
605-466-2143



## Bryan Gill

Sales Manager  
701.730.0134  
bigredgenetics@hotmail.com

## Kevin Pifer

Auctioneer  
701.238.5810  
kpifer@pifers.com

## Andy Mrnak

Sales Manager / Auctioneer  
701.206.1095  
andy@pifers.com

# Pifer's

LIVESTOCK MARKETING  
& AUCTIONEERING

1506 29th Ave South  
Moorhead, MN 56560  
218.477.1968

"Call us today and we will come to your ranch at no obligation."  
**Book your 2009 Sales/Auctions Now!**

877.700.4099

www.pifers.com



# Videography

Change the way livestock are bought and sold! Let us come in and video all the sale lots for your sale. We then produce a DVD showing each animal. This DVD can be sent out with catalogs to potential buyers. For the actual sale, we play the DVD and buyers watch the video on large screens. Sales can be conducted in any comfortable surrounding.

You will love letting your animals stay in display pens versus running them through the auction ring! Your customers will love the fact that they can be in a comfortable climate and environment!

***We can produce your next project no matter how big or small.  
Don't miss out on this exciting marketing tool.***

**Call Us Today!**

Purple Haven Enterprises  
Jeff "Tigger" Erhardt  
3270 45th Ave  
New Salem, ND 58563

Home: 701-843-7843  
Cell: 701-220-7843  
purplehavenenterprises@gmail.com  
www.purplehavenenterprises.com

## Heart River Genetics, LLC

Bovine Embryo Transfer and Donor Housing Facility • AETA Certified Technicians  
Monthly Veterinary Inspection • Excellent Health & Nutrition



Located 7 miles south of  
Belfield, ND, on US Hwy 85,  
west side of highway

Chuck & Annette Steffan • 4291 Hwy 85 South • Belfield, ND 58622  
701-575-8145 • cell: 701-290-9745 • heartrr@ndgateway.com

