

Pifer's
*Livestock
Marketing*

1506 29th Ave. S.
Moorhead, MN 56560

Annual Spring Bull and Female Sale

Gill Red Angus

Flush Sells!



"You Buy Our Bulls, We Will Bid on Your Calves"



He Sells!

She Sells!



Dam is a full sister to Glacier Chateau

**Don't Miss
this Sale!**

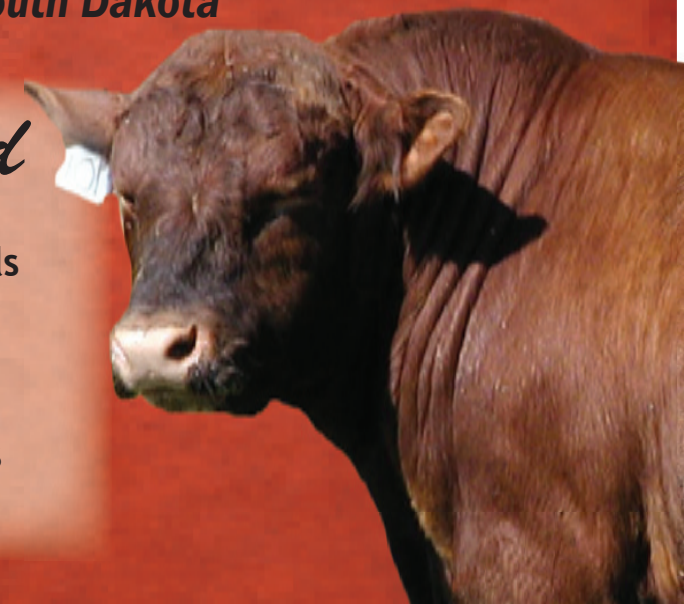


February 2, 2010 - 12:00 p.m. (MT)

At the Ranch Near Timber Lake, South Dakota

Selling 500 Head

- 180 Bulls
- 80 Head of 20 Month Old Summer Born Bulls
- 45 Head of 16 Month Old Fall Born Bulls
- 55 Head of Spring Born Yearlings
- 50 Registered Females
- 170 Commercial Open Replacement Heifers
- 100 Commercial Bred Heifers



Gill Red Angus

February 2, 2010 - 12:00 p.m. (MT)

At the Ranch Near Timber Lake, South Dakota

www.gillredangus.com

RANCH HEADQUARTERS

Gill Red Angus
HC 64, Box 146 • Timber Lake, SD 57656
E-Mail: gillreds@dishmail.net
Larry, Janet & Kenny Gill • 605-865-3288
Kenny & Laura Gill • 605-865-3525
Brent & Emily Gill • 605-848-3722

SALE DATE & TIME

Tuesday, February 2, 2010 • 12:00 p.m. (MT)

SALE LOCATION

Gill Red Angus sale facility • On the ranch
Timber Lake, South Dakota

SALE-DAY TELEPHONE

605-848-1996 • Larry's Cell
605-848-3722 • Brent's Cell
701-730-0134 • Bryan's Cell
605-845-6109 • Kenny's Cell

DIRECTIONS TO SALE

Gill Red Angus Ranch is located 120 miles south of Bismarck, ND, 34 miles west of Mobridge, SD and 6 miles east of Timber Lake, SD.

If traveling east from Timber Lake: Go 6 miles on Highway 20 to ranch turnoff. Turn left, go north 1.5 miles. Turn left, go west ½ mile.

If traveling west from Mobridge or Bismarck: From Highway 63 and Highway 20 Junction, go 8.5 miles west to ranch turnoff. Turn right, go north 1.5 miles. Turn left, go west ½ mile.

ACCOMODATIONS

Mobridge, South Dakota
Wrangler Motor Inn • 605-845-3641
Grand River Casino • 1-800-475-3321

LUNCH

Complimentary lunch available on sale day.

MARKETING & BREEDING MANAGER

Bryan & Kristen Gill
4813 Amberglow Dr
Bismarck, ND 58503
Cell (701) 730-0134
E-Mail: bigredgenetics@hotmail.com

AUCTIONEER

Kyle Gilchrist • 641-919-1077
Roger Jacobs • 406-373-7385

RINGMEN

Terry Robinson • *Farm & Ranch Guide*
701-255-3037 or 701-471-5153 (cell)

Kris Petersen • *Cattle Business Weekly*
701-339-0305

Alan Sears • *Western Ag Reporter*
308-660-3866

BUYER REPRESENTATIVES

Dan Hooper, Merriman, NE • 308-282-2309
Terril Ostrum, Colorado • 303-570-9284

Myron Edelman - RAA • 307-351-6032
Gary Fickle, Crawford, NE • 308-665-2439
308-430-0437 Cell

Joe Vodicka, Spearfish, SD • 307-351-2024
Chris Polzine, Minnesota • 612-916-0105

Buyers unable to attend sale may have their bid represented by contacting the auctioneer, one of the buyer representatives, the marketing manager or Gill Red Angus.

SALE CATALOG

Erika Bertsch • Pifer's Livestock Marketing
Moorhead, Minnesota

SALE VETERINARIAN

Oahe Vet Clinic • Mobridge, South Dakota •
605-845-3634

SALE ORDER

Cattle will sell in catalog order, but are subject to change on sale day.

INSPECTION OF CATTLE

All bulls and registered females will be available for inspection before the sale. Commercial Heifers will be at Gill Red Angus beginning on Saturday, January 30, 2010.

LOT TAGS

Ear tag numbers on the sale cattle will correspond to the sale catalog.

LOAD OUT

No semis on sale day and no load out after dark on sale day.

DELIVERY OR \$\$\$ OFF

Pick up your bulls on sale day or the following day and receive \$25 off each bull purchased. Or Gill Red Angus will assist in making delivery arrangements of the sale animals to the new purchaser's destination at the least cost possible. All such deliveries are at the buyer's risk.

SALE TERMS & CONDITIONS

Any terms and conditions not covered by the catalog will refer to the Standard Terms & Conditions set forth by the Red Angus Association of America.

GILL RED ANGUS GUARANTEE

All bulls that are in good breeding condition at the beginning of the first breeding season are guaranteed breeders. This does not include any injury. Any bull that settles one third or more of the healthy cows he services or passes a fertility test made by a competent veterinarian during the first six months after the sale date is considered a good breeder. All claims for adjustment or refund must be made within six months of sale date. All bulls returned must be in good and healthy condition. Any bulls given a fertility test within the first six months after the sale date will be at the buyer's expense.



Watch the Sale Online!
www.superiorlive.com
www.superiorlivestock.com

Hello Ranchers,

First, we want to thank you for your interest in our program. We understand the commercial rancher is the backbone of this industry. That is why we work so hard every day to make our cattle and our customer service as good as possible. If you aren't familiar with how our customer service program works, please take the time to learn more about it on the next page.

This year marks the first year that Gill Red Angus will be combining both our Fall and Spring Sales into one big event. Throughout the year, we continue to drive around the country visiting ranches to get to know our customers better and to make sure our bulls are doing what they are supposed to be doing. We also try to locate feeder calf and replacement heifer buyers for all of you. The summer very quickly turns into fall and we are at the sale barn at least three days a week bidding on your calves. That doesn't leave much time to put together a good fall sale. So we've decided to focus our efforts on a single Spring sale that will combine all the yearling, 16 month old fall born and two-year old bulls, along with all the commercial and registered females.

The bulls in this offering are impressive, very possibly the best set of bulls we have had the opportunity to sell. It goes to show that the genetics we choose are working for us and we know they will work for you as well. There is something for everyone. We have been selling bulls to repeat customers in big country throughout California, Utah, Colorado, Wyoming, Nebraska, Montana, South Dakota, and North Dakota. We are very confident that they will work well for you wherever you live.

The registered females are right out of the heart of our program. When you study the pedigrees, you will notice that we aren't just selling the tail end. We feel this is as good of a group of females as you will find this spring.

The open commercial heifers are again outstanding and are consigned by some of our top commercial customers. Only the best will be at the sale. The bred heifers are also a great group of heifers. We purchased several hundred heifers for the Watson Ranch last fall from our customers and they bred them all. Kenny went down and sorted the heifers and we picked the top end for our sale. They were ultra sounded and are sorted into calving intervals. We think they are a strong set of bred heifers.

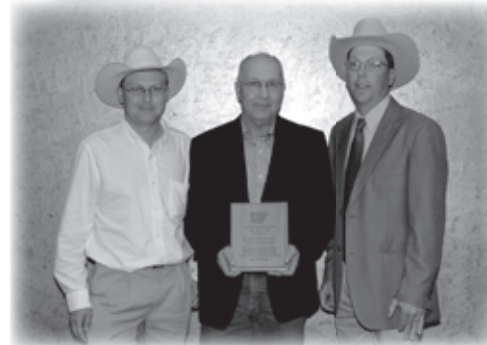
The sale will begin at 12:00 MT, starting with the commercial open heifers. The sale will run in catalog order and will move quite rapidly. We invite you all to come early, have a look at the cattle, eat a good lunch, and find a seat.

Please call any of the sale staff, the buyer representatives, or any of us if you have questions. We will do all we can to help. If you can't make it to the sale but would like to participate, you can either leave a bid with us, the buyer reps, ring men, or be on Superior.

Thanks again and we will see you sale day.

The Gills

FREE SHIPPING
up to 300 miles
on bulls purchased
for \$2,000 or more!



Gill Red Angus was awarded
Pioneer Breeder of the
Year & 2010 marks their
31st year in the Red Angus
Seedstock Business!



Nick's first deer!



Nick pheasant hunting!

HOW TO PARTICIPATE AS AN ABSENTEE BUYER

We prefer for each of you to be in attendance on sale day. Realistically, we know there will be some scheduling conflicts and distance limitations. In these cases, we have arranged for you to be able to participate in the sale on an absentee basis.

If possible, you can come by and evaluate the animals prior to sale day. If distance is a problem, we can also provide you with a videotape or DVD of all the cattle for home viewing. All of the lots in the sale will be available for viewing online prior to sale day at www.superiorlivestock.com as well.

Customers tell us that the video does a good job of showing conformation, structural correctness, and how the cattle travel, etc. Our sale book, with complete data on each animal, is very helpful. Please feel free to call us with questions. In addition, there will be qualified persons on hand sale day to evaluate the bulls and answer any questions you might have.

HERE'S HOW IT WORKS

Please call Superior Productions at 800-431-4452 and pre-register for your buyer's number. At that time they will give you the bid line number that you will use on sale day to place bids over the phone. The sale will be broadcast via satellite on RFD-TV - Dish Network Channel 231 and DirecTV channel 379. The sale can also be seen on the internet at www.superiorlivestock.com. Bidders who are successful in making purchases via satellite will be contacted by Gill Red Angus after the sale to settle payment and shipping arrangements.

Gill Red Angus



Hudson going for a drive!



Holden and Gramps!

Visit Our Website
www.gillredangus.com

A video of each bull is available on the website.



"You Buy Our Bulls, We Will Bid on Your Calves"

"You Buy Our Bulls, We Will Bid on Your Calves"



The Gill Red Angus Customer Marketing Program

"You Buy Our Bulls, We Will Bid on Your Calves"

Something that sets us apart from most of our competition is a Customer Buy Back Program. Our slogan is "You buy our bulls and we will bid on your calves." This has really helped our customers on selling day. We ran some calves up as much as \$5 per hundredweight. You add that up on a load of 600-pound steers, and you made an extra \$2,500 just by being our customer. Compare that to our sale average the last couple years - that's a free bull. How can you go wrong?

Here is how it works:

✓ First you must be a Gill Red Angus customer. At marketing time, contact Gill Red Angus with the marketing option you wish to pursue:

- **Complete Retained Ownership**
- **Partial/Partnership Retained Ownership**
- **Livestock Auction or Off-the-Farm Marketing** - Sell 100% of your calves off-the-farm or at the stockyards and a Gill staff member will be there to place a bid on them for you.
- **Replacement Heifer Marketing** - Market your top-quality open and bred heifers through our annual production sales in February. (We have spent thousands of dollars on advertising over the years. Use our past advertising and known name to market your replacement females.) Call for more information.
- **Discounted semen available** to all customers who want to AI.
- **Discounted vet supplies** through DeTye Vet Supply.

✓ When possible, we will work with our customers to help form co-mingled loads of calves.

Upon harvest, if possible, Gill Red Angus will prepare a report, complete with feed yard and harvest data, for your use.

✓ We are also available for consultations regarding breeding, replacement heifer procurement, and all marketing options. We will help you in any way we can to make your bottom dollar grow.

"You Buy Our Bulls, We Will Bid on Your Calves"



**Consigned by Tarter Ranch
Dean Tarter - 605-797-4497**

**Consigned by Hofland Ranch
Lee Hofland - 701-290-7114**

**Consigned by Hitz Ranch
John Hitz - 701-740-8066**

Commercial Open Heifers

This group of open replacement heifers are top notch. Every year we have the Tarter Ranch heifers from Camp Crook, SD and the Hoffland Ranch heifers from Reeder, ND. They are always outstanding. This year we have a new customer consigning his replacement heifers. He is John Hitz from New Rockford, ND. All three of these groups are very good and are nearly 100% Red Angus. Last year we sold 160 head and Dave Mitchell, NE took them all over Superior. We were down there this summer and had a look at them and they looked great. You couldn't hardly tell the difference from one owner to another. They were real uniform, and these will be the same way. We expect these girls to weigh around 700 lbs come sale day, and we are selling them by the head. So if you are in the hunt for some good ones, here they are.



92 Bred Heifers

**Consigned by Watson Ranch
Mike & Willie Watson
Willie - 605-350-3495
Mike - 605-350-0765**

This group of heifers is about as good as you will find. We have lots of customers that sell groups of high quality replacement heifers. We purchased most of these heifers for Watson Ranch last fall from our bull customers and the group we didn't purchase, he got privately from another customer. We know our customers and we know where the good ones are. These girls have the genetics behind them to be outstanding cows. Watson Ranch purchased around 500 head of heifers and bred them all. Before Watson Ranch sold any this fall, Kenny went down and sorted the top end off. These are the heifers that are in this sale. So only the best will be here. They were all pasture bred to top Gill Red Angus, Broken Heart, and Thomas Ranch Red Angus calving ease bulls, and ultrasound for calving dates. They will be tagged in two different groups. The first group will be ultrasound bred to calve from February 20th to March 10th, and the second group will be from March 10th to April 1st.

Lot 1

LMG GILLS POWER DAWG 8628
May 20, 2008 1284166

Pen 11 WR Mr. Red Dawg 5335 1046249
SST KP Arrow M417 866755
BUF CRK Valentino N031
TMAS Ms Fortune 114
BIEBER Betterarrow 7543
SST Kyla's Pewser 2821

BW: 83 lbs
ADJ. BW: 205 lbs.
WW: 776 lbs.
1.26 square inches of REA/cwt



Sire of Lot 1

BW	WW	YW	MK	TM	STAY	MARB	RE	BF
0.6	44	75	20	42	8	-.11	.29	.01

Retaining 1/4 Semen Interest!

In all our years of raising Red Angus bulls, I am not sure if we have ever made a bull with as much middle and muscle as this guy has. He is truly a powerhouse and what Red Angus is all about. His dam was purchased at the Sand Hills Red Angus Mature Dispersal a few years back, and she is on our future donor cow list. Her udder is as correct as one could want, her feet and legs are near perfect, she is moderate in frame, deep bodied, has that great cow look to her, and is always in excellent condition. Power Dawg 8628 has done almost everything one could want. He was born the right size with an 83 lbs birth weight, which is a ratio of 95, weaned off at 776 lbs with a ratio of 1.17. His yearling and rib eye ratios are also at a 103 and 109! He is the dark cherry red color we all love, and to top it off, his disposition is awesome. We have weaned calves off of the first Red Dawg daughters and they did great. Their udder structure is good, they are easy doing, sure footed, and raised some of the top calves this year. Power Dawgs dam also has a 106 MPPA. This guy will raise you some powerful big bodied bulls, and some breed stopping females. If you are a registered breeder looking for a herd sire prospect, look no further. You will have to put on a lot of miles to find one any better. His EPDs are close to perfect as well. There is only one reason why we are not keeping him for ourselves, that is because we already have 2 Red Dawg sons that we kept and are using. We do plan to AI to this guy though, as we feel his genetics are something we have to use.



Lot 1

Lot 2

LMG GILLS ACCELERATOR 8906
June 9, 2008 1284151

Pen 11
PIE Accelerator 4028 979303
PERKS Advance 121R
PIE Ms Dinero 1035
LMG Brancy 060 745330
HAMMEL Run Cloud 525
LMG Miss Brandy149-885

BW	WW	YW	MK	TM	STAY	MARB	RE	BF
1.6	25	55	9	21	8	-.07	.12	.00

Retaining 1/4 Semen Interest!

Here is another herd sire prospect who is a grandson of the powerful, muscle king, Advance 121R. Accelerator 8906 is a very attractive, real thick made bull that will catch your eye. His maternal grand sire, Hammel Run Cloud, is a bull we used on heifers for several years, and then we found out how good his daughters really were. Several of his daughters are now top cows in our program. You will see other great bulls in this sale that go back to him. 8906 may not have the most impressive EPDs, but I guarantee you he will do his job. He is an impressive bull that I know you will like!!!

BW: 89 lbs
ADJ. BW: 205 lbs.
WW: 682 lbs.
1.21 square inches of REA/cwt



Sire of Lot 2



Lot 2

Lot 3

LMG GILLS MEAT WAGON 8604
May 10, 2008 1284105

Pen 11
LMG Gills Heavens Door 5570 1068518
SRN Heavens Door 2095
LMG Cherokette 1126
LMG MTX 672-827 629258
HAMMEL Run Cloud 525
LMG MTX 672

BW	WW	YW	MK	TM	STAY	MARB	RE	BF
0.2	33	69	13	29	5	.00	.13	.00

Retaining 1/4 Semen Interest!

Every year this cow brings in a top calf. In fact, her demand by other breeders is so strong we sold more of her natural offspring to registered breeders, than any other cow on our ranch. Her most famous daughter sold for \$5000 to Nordlund Stock Farm, MN through the first Santa Sale. Since then they have flushed and sold several sons and daughters all over the country, with one being a highlight this year in Denver at the National Western Sale. His dam is 12 years old and has never missed, always calves up front, real easy keeping, has great feet, and an udder that has held up great with her age. Meat Wagon's sire is a bull we raised and sold to a good friend, bull and female customer, and owns one of those feedlots that love to feed our customers calves, Rich Waller from Holdrege, NE. Heavens Door 5570 was a standout the year he sold, but he had a little more birth than most purebred breeders like, and was probably the buy of the year. We mated him with some cows that didn't have much birth and the shape that I thought would work great. He sired sons and daughters that are at the top, they are all shaped the same, deep ribbed, thick, very powerfully made, that are born the right size. This is definitely a bull that should be seriously looked at by all registered and commercial breeders. He is the right kind!

BW: 80 lbs
ADJ. BW: 205 lbs.
WW: 682 lbs.
IMF Ratio: 113
1.26 square inches of REA/cwt



Maternal Sister of Lot 3



Lot 3

Lot 4

LMG GILLS MAXIMUS 8654
June 20, 2008 1284296

Pen 11
PIE Maximizer 5052 1029127
PIE Atlantic 2204
PIE Power Lady 9077
LMG Miss Lass 5074 1068608
SEEGER Marias 366
LMG Miss 2008

BW: 85 lbs
ADJ. BW: 205 lbs.
WW: 672 lbs.
IMF Ratio: 107

BW	WW	YW	MK	TM	STAY	MARB	RE	BF
0.9	40	73	20	40	9	-0.02	-.13	-.01

Retaining 1/4 Semen Interest!

Maximus 8654 is another powerful made, good numbered bull that needs to be on your list. He is very impressive to look at in person and on paper. His ratios are 101 for weaning, 108 for yearling, and 107 for IMF! While only having an 85 lbs birth weight! What more could you want. His dam is an outstanding cow that has a 103 MPPA and goes back to the great LMG 646 cow. 646 raised some top sons and daughters, and one of the best bulls we have ever raised was her son. He sold to Jerry Olson several years back, and just loved him. This is a great cow line! This guy is made right, has great muscle structure, very thick, sure footed, and is built like a hog with more guts than most other bulls that will sell this year. So if you like them made deep and thick, and if you are serious about using only the best bulls in your program, that come out of great females then this is the bull you need to take home!



Lot 4

Lot 5

LMG GILLS BULL DAWG 8511-702
March 8, 2008 1284407

Pen 11
WR Mr. Red Dawg 5335 1046249
LMG Dynette 902 669901
BUF CRK Valentino N031
TMAS Ms Fortune 114
BUF CRK Barney 3474
LMG Dynette 28

BW: ET
WW: 608 lbs.

Here is a full brother to the powerful flush we sold last spring that averaged over \$4500. We kept half interest in one of them that we are using real hard in our program. I think it is the best flush we have ever had. His dam is the great LMG Miss Dynette 902 cow that we are trying to get as much influence out of her as we possibly can into our program. We have 2 direct sons we are using and we are keeping 1/2 interest in a grand son that sells in the yearling pen here as well. She does nearly everything right. Her daughters are flat out good, and her sons are extremely impressive to look at and make some good daughters as well. This guy and a handful other ET 2 year old bulls selling were weaned a little later and were behind when we got them, so instead of pushing them hard to catch up with the mates last year, we just threw them in with the bulls we were holding over for this sale. They grew up great and are some outstanding individuals. This guy has the genetics that will get you where you need to go.

BW	WW	YW	MK	TM	STAY	MARB	RE	BF
2.4	47	84	18	42	9	-.10	.25	.00



Lot 5



Brother of Lot 5



Dam of Lot 5

Lot 6
LMG GILLS RAMBLER 8908
 June 18, 2008 1284313

Pen 11 OHRR Dakota Rambler 75R 1025344
 LMG Miss Rose 5045 1068637
 OHRR Dakota Copper 29K 10H
 SRN Heavens Door 2095
 LMG Rose 548-867

BW	WW	YW	MK	TM	STAY	MARB	RE	BF
2.0	36	68	17	36	5	-.15	.12	.00

BW: 84 lbs
WW: 712 lbs.
 1.18 square inches of REA/cwt

8908 is a powerful Dakota Rambler 75R son that will turn your head. We purchased Dakota Rambler 75R from OHR Red Angus, ND with a group of guys for \$15,000. What got me so excited about him was his dam. She is as good looking of a cow that you will find. She got others excited as well, as she sold the next fall for \$17,500 to Six Mile Red Angus out of Canada. Rambler has not let us down since. He has sired some outstanding bulls over the years, but his daughters are where he really shines. They have awesome udders, deep ribbed, and made right. A policy of ours when we use a bull is to see and love the bulls dam. I believe that a bull will throw daughters that resemble his dam, and Dakota Rambler is proving this theory. 8908's dam is a top cow as well as she has a 102 MPPA and is a daughter of Heavens Door.



Sire of Lot 6 & 7

Lot 7
LMG GILLS RAMBLER 8620
 May 15, 2008 1284159

Pen 11 OHRR Dakota Rambler 75R 1025344
 LMG Miss Thelma 2041 864339
 OHRR Dakota Copper 29K 10H
 VGW Rattler 908
 LMG Thelma 634

BW	WW	YW	MK	TM	STAY	MARB	RE	BF
0.8	37	58	13	32	5	-.05	-.03	.00

BW: 82 lbs
WW: 693 lbs.
IMF Ratio: 109
 1.13 square inches of REA/cwt

Here is another top Dakota Rambler 75R son that is as good as they come. His dam is a powerful Rattler 908 daughter that does a top job. 8620 is powerful and made right. If I needed a couple bulls, I would get both Lot 6 and 7, they are half brothers, made right, and are excellent bulls. Make yourself a consistent calf crop out of them!

Lot 8
LMG GILLS MAX 8607
 May 26, 2008 1284113

Pen 11 PIE Maximizer 5052 1029127
 LMG 167-876 629306
 PIE Atlantic 2204
 PIE Power Lady 9077
 LMG Reload 2957 167

BW	WW	YW	MK	TM	STAY	MARB	RE	BF
-0.4	33	57	17	34	6	-.13	.33	-.01

Holy Cow!!! Check out the rib eye measurement here of 1.32 square inches per every hundred pounds of body weight!!! This is nearly unheard of in the Red Angus breed. He even looks like he has a big ribeye, as he is a very thick made bull as well. Kenny has thought this is one of the best bulls all year. He really is a standout. His dam is about as proven as you can get as she is a 12-year old cow and has a 104 MPPA and never misses. His sire is the good Maximizer bull that we purchased from Pieper Red Angus, NE in 2006. His sons are deep bodied, long made, and very good on their feet and legs. 8607 is a top notch bull that you will like.

BW: 80 lbs
WW: 714 lbs.
 1.32 square inches of REA/cwt



Lot 8

Lot 9
LMG GILLS POWER DAWG 8635
 May 15, 2008 1284200

Pen 12 WR Mr. Red Dawg 5335 1046249
 LMG Marie 4015 968412
 BUF CRK Valentino N031
 TMAS Ms Fortune 114
 SRN Heavens Door 2095
 LMG 780 070

BW	WW	YW	MK	TM	STAY	MARB	RE	BF
4.0	52	96	15	41	8	-.12	.38	.01

BW: 96 lbs
WW: 742 lbs.
 1.22 square inches of REA/cwt

OK, here has been a favorite and a standout since birth. Talk about a head turner. He is a very powerful bull that is extremely long bodied, heavy muscled, good footed, clean made, and easy doing. He excels in all categories. His dam is a highlight in this auction as well and sells as Lot 184. We are selling her as one of the donor cows. She does it all, and in fine fashion. Her MPPA is 101, she is very big bodied, long made, heavy milking, easy keeping, and good footed. This is the kind of cow I am looking for when we go out and find a herd sire to use on our cows! Check out the performance Power Dawg 8635 has behind him. Red Dawg does it over and over again, year in and year out. This guy has your name on him!!!



Lot 9



Maternal Brother of Lot 9

Sire of Lot 219

Lot 10



LMG GILLS DAKOTA 8527-9M
March 20, 2008 1284406

Pen 12 BW: ET WW: 569 lbs.

LCHMAN Copper Rob 1204D 502221 LMAN King Rob 8621 COPPER Lass 2392

MESSMER Ophelia 9502 482004 LCC Heaven or Bust 1000B NODAK Lady Licorice

BW	WW	YW	MK	TM	STAY	MARB	RE	BF
-1.4	23	47	23	35	6	-.05	.06	.01



OHRR Dakota Copper 29K - Full Brother to Lot 10

Retaining 1/4 Semen Interest!

OK, here is your chance to get a bull that is a full brother to one of the most heavily used bulls in the country. His full brother is OHR Dakota Copper 29K that ABS, OHR Red Angus, and Broken Heart Ranch own. Dakota Copper has proven himself out to be a top notch female making bull. He is also the sire to Dakota Rambler 75R who is the sire to several bulls selling here. I like the looks of Dakota 8527 better than the look of Dakota Copper. He looks like he will have a bit more performance in him than the old bull, but with the same great maternal influence that he has. He is an embryo calf that was weaned out of the same herd as Lot 5. He came in a little smaller but has never looked back!! He was never offered for sale before and is definitely a herd sire prospect. Come get him!!!



Lot 10

Lot 11



LMG GILLS NEBRASKA 8610
May 8, 2008 1284123

Pen 12 LMG Gills Bond 5604 1068537 NSF Bond L007 LMG Sara 3027

LMG Dynette 936 669935 LARSON Red Sky 539 LMG Dynette 212

BW	WW	YW	MK	TM	STAY	MARB	RE	BF
-0.7	30	56	12	27	8	-.01	.25	-.01

OK cowboys, here is one you need to take a good look at. First of all, he came in at 78 lbs at birth. His dam is a good 11-year old cow that has definitely paid for herself. Her feet and udder are still excellent and she is always in great shape. The sire is the outstanding LMG Gills Bond 5604 that sold for \$10,500 to good friends, sale rep, and customer, Dan and Tara Hooper from Merriman NE. We found a home for their heifer calves right off the cow this year for \$1.15 to Dave Mitchell also from NE. They will be for sale next fall as breds. Call us if you are looking, we will put you in touch with Dave! Anyway, Bond has done a great job for us and for the Hooper's. In fact, they came back and purchased his dam a year ago. They just love him and his calves. 8610 is a smooth made bull with excellent phenotype. Oh ya, take a look at his huge REA measurement of 1.43 square inches of REA/cwt! This is a calving ease bull loaded with muscle that will impress the heck out of you!

BW: 78 lbs.
WW: 639 lbs.
1.43 square inches of REA/cwt



Lot 11

Lot 12



LMG GILLS RAMBLER 8642
May 12, 2008 1284229

Pen 12 OHRR 10H Dakota Rambler 75R 1025344 OHRR Dakota Copper 29K OHRR Ms Scarlet 10H

LMG Miss Daorv 4126 1009580 NSF Bond L007 LMG Miss Daorv 2046

BW	WW	YW	MK	TM	STAY	MARB	RE	BF
-0.9	32	60	23	39	4	-0.02	-.02	.00

8642 is a top calving ease bull that is loaded with guts and muscle. He is an extremely impressive individual. Plus he has the color that we all love. Check out his weights of 78 lbs at birth all the way to 746 lbs at weaning. It is no wonder since he is out of the good Daorv 4126 cow that has a 105 MPPA.

BW: 78 lbs.
WW: 746 lbs.
1.13 square inches of REA/cwt



Lot 12

Lot 13



LMG GILLS ACCELERATOR 8605
May 30, 2008 1284109

Pen 12 PIE Accelerator 4028 979303 PERKS Advance 121R PIE Ms Dinaro 1035

LMG Velma 225-840 629271 BUF CRK Barney 3474 LMG Velma 225

BW	WW	YW	MK	TM	STAY	MARB	RE	BF
1.6	28	57	10	24	9	-.05	.17	-.01

This guy is out of a 107 MPPA cow that never misses. She is 12 years old this spring and still has a great udder and super feet under her. We really should go back and use Barney some more as his daughters have been awesome cows. Fitzough Ranch from WY purchased her son last year and was one of my favorites. This guy resembles him and will work for you.

BW: 84 lbs.
WW: 682 lbs.
1.23 square inches of REA/cwt



Dam of Lot 13

Lot 14
LMG GILLS HEAVENS DOOR 8621
 May 8, 2008 1284160

Pen 12 SRN Heavens Door 2095 LMG Hevn's Sake 1002F
 830626 LCHMN Eleanor J1266

LMG Miss Susette 2058 VGW Bounus 429
 86345 LMG Susett 746

BW	WW	YW	MK	TM	STAY	MARB	RE	BF
4.3	46	81	14	37	6	-0.05	.13	.00

BW: 96 lbs.
WW: 749 lbs.
IMF Ratio: 109
 1.12 square inches of REA/cwt

8621 is a powerful Heavens Door son that is stacked full of muscle and guts. His dam has a 103 MPPA and his daughters should be top notch. This is the bull for you if you want to add some pay day weight to your calf crop.

Lot 15
LMG GILLS RAMBLIN ROCK 8532-
 March 14, 2008 1284404

Pen 12 PIE Accelerator 4028 PERKS Advance 121R
 979303 PIE Ms Dinero 1035

LMG Roxie 689-818 HAMMEL Run Cloud 525
 629249 LMG Roxie 689

BW	WW	YW	MK	TM	STAY	MARB	RE	BF
-0.1	24	53	16	28	7	-0.02	.17	.00

BW: ET
WW: 609 lbs.

Here is a phenotypically and genetically great bull. His dam has a 109 MPPA and never misses. The Roxie cow line is second to none. We have flushed her, her daughter 1080, and her grand daughter 4110. All three are outstanding. This guy has your name on him.



Dam of Lot 15



Sire of Lot 15

Lot 16
LMG GILLS RAMBLER 8707
 May 12, 2008 1284161

Pen 12 OHRR 10H Dakota Rambler 75R OHRR Dakota Copper 29K
 1025344 OHRR Ms Scarlett 10H

LMG Miss Sara 2036 VGW Rattler 908
 864348 LMG Sara 49-804

BW	WW	YW	MK	TM	STAY	MARB	RE	BF
2.4	39	67	17	36	5	-.12	.14	.00

BW: 89 lbs.
WW: 717 lbs.
 1.17 square inches of REA/cwt

Here is another powerful Rambler son. His dam is a full sister to LMG Gills Bond 5604's dam. She has a 105 MPPA. Both her sons and daughters should be outstanding.



Grand Dam of Lot 16

Lot 17
LMG GILLS ACCELERATOR 8644
 May 8, 2008 1284249

Pen 12 PIE Accelerator 4028 PERKS Advance 121R
 979306 PIE Ms Dinero 1035

LMG Miss Lass 5014 SRN Heavens Door 2095
 1068548 LMG 646 014

BW	WW	YW	MK	TM	STAY	MARB	RE	BF
0.3	31	64	14	29	7	-.05	.33	.00

BW: 79 lbs.
WW: 749 lbs.
 1.31 square inches of REA/cwt

8644 is an outstanding Accelerator son. We planned on using this guy over the summer, but we decided we had enough of his pedigree in our herd, so we went with a Heavens Door son that we will also be selling here. We think an awful lot of this bull. He has the eye appeal, muscle structure and dam that we require in our program. His dam is a very good cow that has a 107 MPPA and a near perfect udder. I wish I had a photo of him, as he is very impressive. I guess you will just have to come and have a look for yourself.



Sire of Lots 17 & 18

Lot 18
LMG GILLS ACCELERATOR 8624
 May 10, 2008 1284083

Pen 12 PIE Accelerator 4028 PERKS Advance 121R
 979306 PIE Ms Dinero 1035

LMG Velma 2054 VGW Rattler 908
 864364 LMG Velma 225-840

BW	WW	YW	MK	TM	STAY	MARB	RE	BF
-0.3	30	58	7	23	7	-.05	.06	-.01

BW: 74 lbs.
WW: 682 lbs.
 1.22 square inches of REA/cwt

Another top Accelerator son that goes back to the great LMG Velma 840 cow.

Lot 19
LMG GILLS MEAT WAGON 8656
 May 15, 2008 1284306

Pen 13 LMG Gills Heavens Door 5570 SRN Heavens Door 2095
 1068518 LMG Cherokee 1126

LMG Miss Cora 3037 DKK Addiction N10
 1068620 LMG Cora 3037

BW	WW	YW	MK	TM	STAY	MARB	RE	BF
0.7	27	50	12	26	4	-.12	.08	-.01

BW: 88 lbs.
WW: 615 lbs.
 1.33 square inches of REA/cwt

Here is another good muscled Meat Wagon son that scanned a huge REA.



Lot 19

Lot 20
LMG GILLS BULL DAWG 8601
 May 3, 2008 1284098

Pen 13 WR Mr. Red Dawg 5335 BUF CRK Valentino N031
 1046249 TMAS Ms Fortune 114

LMG Susett 746 HAMMEL Run Cloud 525
 585813 LMG Susett 137

BW	WW	YW	MK	TM	STAY	MARB	RE	BF
1.0	35	68	18	35	10	-.07	.08	.01

BW: 86 lbs.
WW: 667 lbs.
 1.14 square inches of REA/cwt

These Red Dawg sons just don't quit. The dam to this guy is also the dam to LMG Gills Rattler 3555, which Nordlund Stock Farm purchased from us and used hard.

Lot 21
LMG GILLS RAMBLER 8528-C13
 May 10, 2008 1284402

Pen 13 **BW:** ET **WW:** 609 lbs.
 OHRR 10H Dakota Rambler 75R OHRR Dakota Copper 29K
 1025344 OHRR Ms Scarlett 10H
 LMG Dynette 902 BUF CRK Barney 3474
 669901 LMG Dynette 28

BW	WW	YW	MK	TM	STAY	MARB	RE	BF
2.1	38	66	19	38	6	-.10	.04	.00

Here is another top LMG Miss Dynette 902 son that will make some outstanding daughters. This embryo transplant bull is sired by Dakota Rambler 75R. I like this guy's pedigree, he will get it done.



Dam of Lots 21 & 22

Lot 22
LMG GILLS BULL DAWG 8510-742
 March 15, 2008 1284398

Pen 13 **BW:** ET **WW:** 639 lbs.
 WR Mr. Red Dawg 5335 BUF CRK Valentino N031
 1046249 TMAS Ms Fortune 114
 LMG Dynette 902 BUF CRK Barney 3474
 669901 LMG Dynette 28

BW	WW	YW	MK	TM	STAY	MARB	RE	BF
2.4	38	66	19	38	6	-.10	.04	.00

Here is another Red Dawg son out of the great LMG Dynetter 902 cow. This cross really worked well, and he will give you what you need.



Full Brother of Lot 22

Lot 23
LMG GILLS COMBO 8672
 May 20, 2008 1284325

Pen 13 **BW:** ET **WW:** 699 lbs.
 MLK CRK Combination 4149 LSF Combination A301M
 987155 BJR Sun Gal 4X-561
 LMG Miss Princess 3012 DKK Addiction N10
 1139572 LMG Princess 4052

BW	WW	YW	MK	TM	STAY	MARB	RE	BF
-1.3	26	55	16	29	9	.11	.08	.00

BW: 77 lbs.
WW: 699 lbs.
IMF Ratio: 121
 1.21 square inches of REA/cwt

OK, if you like your bulls to look good, and have the perfect numbers, then look no further. This guy has great eye appeal, and numbers to no end. He has a good birth to yearling spread with milk right where I like it, while his carcass numbers are both where they need to be. He has ratios at the top as well, with a 106 for both weaning and yearling, a 121 for IMF and 111 for REA. This guy has everything you could hope for.

Lot 24
LMG GILLS AVALANCHE 8523-41
 March 27, 2008 1284400

Pen 13 **BW:** ET **WW:** 668 lbs.
 SHOCO Data SHOCO Sir Robin
 761532 VDAR Blackana 303
 CCF Estonia 626-920 LMAN King Rob 8621
 694350 GMRA Estonia 626

BW	WW	YW	MK	TM	STAY	MARB	RE	BF
2.7	40	69	20	40	5	.00	.10	.01

Here is a good Shoco Data son that has done well. His dam is the outstanding CCF Estonia 920 cow. This is a pedigree that has proven to work.



Sire of Lot 24

Lot 25
LMG GILLS ACCELERATOR 8630
 June 3, 2008 1284170

Pen 13 **BW:** ET **WW:** 703 lbs.
 PIE Accelerator 4028 PERKS Advance 121R
 979306 PIE Ms Dinero 1035
 LMG Susett 3016 VGW Rattler 908
 912510 LMG Susett 069

BW	WW	YW	MK	TM	STAY	MARB	RE	BF
2.3	33	63	10	26	6	.03	.06	-.01

BW: 95 lbs.
WW: 703 lbs.
IMF Ratio: 143
 1.11 square inches of REA/cwt

This is another real good Accelerator son that excels in IMF as he has a ratio of 143!

Lot 27
LMG GILLS COMBO 8687
 May 6, 2008 1284354

Pen 13 **BW:** ET **WW:** 616 lbs.
 MLK CRK Combination 4149 LSF Combination A301M
 987155 BJR Sun Gal 4X-561
 LMG Miss Rose 6016 LMG Big Spread 4533
 1139671 LMG Rose 548-867

BW	WW	YW	MK	TM	STAY	MARB	RE	BF
-0.8	23	54	11	22	8	.04	-.09	.00

BW: 71 lbs.
WW: 616 lbs.
 1.14 square inches of REA/cwt

This good calving ease bull has all the bases covered.

Lot 26
LMG GILLS BIG DAWG 8814
 May 27, 2008 1284156

Pen 13 **BW:** ET **WW:** 560 lbs.
 WR Mr. Red Dawg 5335 BUF CRK Valentino N031
 1046249 TMAS Ms Fortune 114
 LMG Miss Freyja 2019 BJR Monu 4X-303
 864311 LMG Freyja 054

BW	WW	YW	MK	TM	STAY	MARB	RE	BF
1.1	36	68	14	31	9	-.18	.20	.00

BW: 84 lbs.
WW: 560 lbs.
 1.36 square inches of REA/cwt

Here is a good-looking bull with a huge REA and a good dam, as she has a 102 MPPA.

Lot 28
LMG GILLS MAXIMUS 8711
 May 25, 2008 1284568

Pen 13 **BW:** ET **WW:** 681 lbs.
 PIE Maximizer 5052 PIE Atlantic 2204
 1029127 PIE Power Lady 9077
 LMG Miss Thelma 5028 DKK Addiction N10
 1068561 LMG Thelma 634

BW	WW	YW	MK	TM	STAY	MARB	RE	BF
-0.3	33	53	20	37	8	.05	.05	-.01

BW: 85 lbs.
WW: 681 lbs.
 1.16 square inches of REA/cwt

This good Maximizer son goes back to the calving ease specialist DKK Addiction N10



Fiedler Ranch Steers



Finn Ranch, SD

Lot 29



LMG GILLS RAMBLIN ROCK 8530
March 8, 2008 1284403

Pen 14 BW: ET WW: 576 lbs.

OHRR 10H Dakota Rambler 75R OHRR Dakota Copper 29K
1025344 OHRR Ms Scarlett 10H

LMG Roxie 689-818 HAMMEL Run Cloud 525
629249 LMG Roxie 689

BW	WW	YW	MK	TM	STAY	MARB	RE	BF
0.9	31	58	23	39	6	-.06	.06	.00



Maternal Sister of Lot 29

Retaining 1/4 Semen Interest!

Here is a very powerful made bull that will get everyones attention sale day. He is a big stout made bull with lots of muscle and bone, along with rib and length. He has good numbers and is out of an outstanding cow. Check out his photo then look at hers. Both are very well made, while she has a 109 MPPA. She is the grand dam to LMG Gills Vin Diesel, the top Red Dawg son we sold 50% semen interest in last year for \$15,000. We used him harder this past summer than any other bull in the history of our program. This is a line that I know works, and when crossed with Rambler, I am expecting awesome daughters to come out of him. Things should get exciting here.



Lot 29



Dam of Lot 29

Lot 30



LMG GILLS POWER DAWG 8618
May 25, 2008 1284150

Pen 14 WR Mr. Red Dawg 5335 BUF CRK Valentino N031
1046249 TMAS Ms Fortune 114

LMG MTX 062 FORSTER CPRTOP 719 ET
745307 LMG MTX 422-830

BW	WW	YW	MK	TM	STAY	MARB	RE	BF
2.1	42	77	21	42	10	-.13	.38	.01

BW: 88 lbs.
WW: 765 lbs.
1.28 square inches of REA/cwt

Retaining 1/4 Semen Interest!

8618 is another real powerful Red Dawg son that is real eye appealing and stacked with greatness. His dam is a top FRR Coppertop 7191 ET daughter. 7191ET is a full brother of Miss Forsters Coppertop 591, who was said to be the best Angus cow in the world, Red or Black!!! 8618's dam has a 106 MPPA and is a daughter of the great LMG MTX 830 cow. Red Dawg is known for his muscle and mass, and he will soon be known for his outstanding daughters. This Red Dawg son will compliment that and make some outstanding daughters of his own.



Grand Dam of Lot 30



Lot 30

Lot 31



LMG GILLS NIGHT RIDER 8531-4
March 17, 2008 1284403

Pen 14 RED YY Red Knight 640F RED YY 23L Topper 408D
601995 RED Top Goldie 40U

LMG Dynette 902 BUF CRK Barney 3474
669901 LMG Dynette 28

BW	WW	YW	MK	TM	STAY	MARB	RE	BF
0.5	36	62	16	34	10	-0.4	.06	-.01

Only a few of these have ever been made in the U.S. and here is one of them. His sire, RED YYY Knight is known for his great daughters, and since this guy is out of LMG Miss Dynette 902, you should get some of the best daughters the breed has seen. He has a quite a bit of white under him, but don't let that stop you as his will sire some top commercial calves.



Dam of Lot 31

Lot 32
LMG GILLS AVALANCHE 8524-272
 March 29, 2008 1284401

Pen 14 **BW:** ET **WW:** 687 lbs.
 PIE Avalanche 381 PERKS Advance 121R
 921776 PIE Ms Grand C 036
 CCF Estonia 626-920 LMAN King Rob 8621
 694350 GMRA Estonia 626

BW	WW	YW	MK	TM	STAY	MARB	RE	BF
2.7	35	71	18	36	6	-0.05	.28	.01

Here is another good son of the great CCF Estonia 920 cow. I have nothing but good things to say about her. This big stout powerful bull will really turn your head sale day.



Dam of Lot 32

Lot 33
LMG GILLS BIG DAWG 8645
 May 12, 2008 1284252

Pen 14 WR Mr. Red Dawg 5335 BUF CRK Valentino N031
 1046249 TMAS Ms Fortune 114
 LMG Miss Marie 5018 SRN Heavens Door 2095
 1068552 LMG Marie 48

BW	WW	YW	MK	TM	STAY	MARB	RE	BF
3.1	39	84	11	31	8	-0.08	.50	.01

BW: 92 lbs.
WW: 579 lbs.
IMF Ratio: 101
 1.38 square inches of REA/cwt

This is another big bodied Red Dawg son that will get it done for you. His muscle structure really shines through with his carcass ultrasound as his REA is huge as he measured 1.38 square inches of REA/cwt.



Lot 33

Lot 34
LMG GILLS HEAVENS DOOR 8807
 May 13, 2008 1284317

Pen 14 SRN Heavens Door 2095 LCHMN Hevn's Sake 1002F
 830626 LCHMN Eleanor J1266
 LMG Miss Sara 5151 LMG Gills Horizon 1551
 1068682 LMG Sara 3063

BW	WW	YW	MK	TM	STAY	MARB	RE	BF
3.8	41	89	10	31	5	-0.07	-.04	.00

BW: 99 lbs.
WW: 576 lbs.
IMF Ratio: 138
 1 square inches of REA/cwt

Here is another good Heavens Door son that has an excellent carcass under his hide.

Lot 35
LMG GILLS ACCELERATOR 8630
 June 3, 2008 1284170

Pen 14 PIE Accelerator 4028 PERKS Advance 121R
 979303 PIE Ms Dinero 1035
 LMG Susett 3016 VGW Rattler 908
 912510 LMG Susett 069

BW	WW	YW	MK	TM	STAY	MARB	RE	BF
2.3	33	63	10	26	6	.03	.06	-.01

BW: 95 lbs.
WW: 703 lbs.
IMF Ratio: 143
 1.11 square inches of REA/cwt
 Here is a full brother to Lot 66.

Lot 36
LMG GILLS BIG DAWG 8639
 June 12, 2008 1284218

Pen 14 WR Mr. Red Dawg 5335 BUF CRK Valentino N031
 1046249 TMAS Ms Fortune 114
 LMG Miss Stormy 4101 VGW Rattler 908
 1009539 LMG Stormy 631-819

BW	WW	YW	MK	TM	STAY	MARB	RE	BF
2.6	45	80	13	36	7	-0.06	.13	.00

BW: 88 lbs.
WW: 689 lbs.
IMF Ratio: 110
 1.11 square inches of REA/cwt

Lots of performance bred into this guy as Rattler and Red Dawg are both known for their high performing offspring. This guys dam has a 103 MPPA as well.

Lot 38
LMG GILLS MAXIMUS 8815
 May 16, 2008 1284157

Pen 14 DKK Addiction N10 PIE Atlantic 2204
 923316 PIE Power Lady 9077
 LMG Miss Lark 2063 BADLANDS Mr Beef 805
 864328 LMG Lark 457

BW	WW	YW	MK	TM	STAY	MARB	RE	BF
1.8	44	75	20	43	8	.08	.11	-.01

BW: 92 lbs.
WW: 768 lbs.
IMF Ratio: 178
 1.05 square inches of REA/cwt

Here is a carcass machine. Check out his IMF Ratio of 178!!! Plus he weaned off at nearly 800 lbs.

Lot 39
LMG GILLS HEAVENS DOOR 8709
 May 19, 2008 1284179

Pen 14 SRN Heavens Door 2095 LCHMN Hevn's Sake 1002F
 830626 LCHMN Eleanor J1266
 LMG Diann 3076 BJR Monu 4X-303
 912550 LMG Diann 1065

BW	WW	YW	MK	TM	STAY	MARB	RE	BF
3.9	48	90	12	37	6	-0.09	-.16	-.01

BW: 96 lbs.
WW: 735 lbs.
IMF Ratio: 112
 .86 square inches of REA/cwt

This Heavens Door son is loaded with performance, middle, and muscle. Like all Heavens Door sons, they aren't pretty, but they are what makes Red Angus great, they are easy doing with the right amount of muscle.

Lot 37
LMG GILLS ADDICTION 8676
 May 3, 2008 1284332

Pen 14 DKK Addiction N10 BJR JR 107
 923316 DKK Dixie 901
 LMG Miss Sara 6084 LMG Gills Rattler 3555
 1139598 LMG Sara 3063

BW	WW	YW	MK	TM	STAY	MARB	RE	BF
-1.1	32	53	23	39	7	-0.07	-.12	-.02

BW: 77 lbs.
WW: 757 lbs.
 1.05 square inches of REA/cwt

This is an impressive Addiction son. He is full of guts and style with the right amount of muscle for a calving ease type bull. Check out his individual performance of a 77 lbs birth weight and a 757 lbs weaning weight. That is very impressive considering this was her first calf. She earned a 106 MPPA out of the deal as well. His pedigree is as impressive as he is. His dam is a LMG Gills Rattler 3555 daughter. His dam is the great LMG Susett 746 donor cow. Addiction 8876's great great grand dam, LMG Sara 328 is still alive and is currently getting flushed at the Heart River Flush facility. She is 18 years old and still getting around pretty good. Talk about some longevity in this pedigree.



Lot 37



Lot 39

Lot 40
LMG GILLS MEAT WAGON 8652
 May 11, 2008 1284287

Pen 15 LMG Gills Heavens Door 5570 SRN Heavens Door 2095
 1068518 LMG Cheroquette 1126

LMG Miss Cora 5064 BCRR Gemstone 346
 1068598 LMG Cora 976

BW	WW	YW	MK	TM	STAY	MARB	RE	BF
2.0	40	73	15	35	6	-.02	-.05	-.01

BW: 85 lbs.
WW: 720 lbs.
IMF Ratio: 142
 1.02 square inches of REA/cwt

8652 is another Meat Wagon that is loaded with muscle and rib. He is full of performance and has a great carcass, while his dam has a 103 MPPA.

Lot 42
LMG GILLS RAMBLER 8631
 May 13, 2008 1284175

Pen 15 LMG Gills Heavens Door 5570 SRN Heavens Door 2095
 1068518 LMG Cheroquette 1126

LMG Lark 3068 BIEBER Red Moon 6042
 912535 LMG Lark 1039

BW	WW	YW	MK	TM	STAY	MARB	RE	BF
-0.1	26	50	10	23	4	-.14	-.12	.00

BW: 79 lbs.
WW: 554 lbs.
 1.19 square inches of REA/cwt

Lot 42 is another well made son of the great LMG Gills Heavens Door 5570.

Lot 44
LMG GILLS ADDICTION 8900
 May 12, 2008 1284352

Pen 15 DKK Addiction N10 BJR JR 107
 923316 DKK Dixie 901

LMG Mis Echeta 6023 LMG Big Spread 4533
 1139670 LMG 167-876

BW	WW	YW	MK	TM	STAY	MARB	RE	BF
-2.1	27	42	24	38	6	.00	.07	-.01

BW: 70 lbs.
WW: 736 lbs.
IMF Ratio: 105
 1.26 square inches of REA/cwt

You need to check out this top calving ease bull. He is stacked with performance and calving ease from one end to the other. How often do you see a birth of 70 lbs and a weaning of 736 lbs? Sleep and watch 'em grow. Plus his dam has a 105 MPPA!!!

Lot 41
LMG GILLS NEBRASKA 8625
 May 30, 2008 1284090

Pen 15 LMG Gills Bond 5604 NSF Bond L007
 1068537 LMG Sara 3027

LMG Miss Marie 2052 RED CFCC 170K
 864394 LMG Marie 927

BW	WW	YW	MK	TM	STAY	MARB	RE	BF
-0.3	31	58	16	32	5	.04	.03	-.01

BW: 87 lbs.
WW: 698 lbs.
IMF Ratio: 110
 1.15 square inches of REA/cwt

Here is another top calving ease Bond son that has some great ones in his pedigree.

Lot 43
LMG GILLS HORIZON 8643
 June 7, 2008 1284234

Pen 15 LMG Gills Horizon 1551 LMG Gill Horizon 5379
 783396 LMG Lydia 727

LMG Miss Rambo 4137 LCC Vaquero 1412J
 1009594 STRAKA'S Ms Rambo 7542

BW	WW	YW	MK	TM	STAY	MARB	RE	BF
0.6	32	64	13	29	7	-.09	-.45	.00

BW: 88 lbs.
WW: 648 lbs.
IMF Ratio: 108
 .81 square inches of REA/cwt

Here is a top Horizon son that goes back to one of the oldest cows on our ranch. His grand dam DMS Rambo 7542 is a coming 13 year old cow that is a past donor cow as well for us. You need to take a look here.



Grand Dam of Lot 43

Lot 45
LMG GILLS BULL DAWG 8614
 May 24, 2008 1284137

Pen 15 WR Mr. Red Dawg 5335 BUF CRK Valentino N031
 1046249 TMAS Ms Fortune 114

LMG Roxie 072 LMG Reload 2957
 745236 LMG Roxie 660

BW	WW	YW	MK	TM	STAY	MARB	RE	BF
3.8	42	77	17	38	7	-.08	.32	.00

BW: 98 lbs.
WW: 657 lbs.
 1.27 square inches of REA/cwt

Here is another big stout Red Dawg son that will get your calves to really push the scale down. He has a super dam as she has a 102 MPPA.

Lot 47
LMG GILLS NEBRASKA 8616
 May 6, 2008 1284139

Pen 15 LMG Gills Bond 5604 NSF Bond L007
 1068537 LMG Sara 3027

LMG Lydia 043 LMG Loaded 0356
 745260 LMG Lydia 667

BW	WW	YW	MK	TM	STAY	MARB	RE	BF
0.9	39	61	16	35	5	.04	.16	-.01

BW: 92 lbs.
WW: 803 lbs.
IMF Ratio: 119
 1.29 square inches of REA/cwt

Here is one of the heaviest weaning bulls in the sale at 803 lbs.

Lot 46
LMG GILLS RAMBLER 8708
 May 12, 2008 1284082

Pen 15 OHRR 10H Dakota Rambler 75R OHRR Dakota Copper 29K
 1025344 OHRR Ms Scarlett 10H

LMG Miss Diann 2053 VGW Rattler 908
 864361 LMG Diann 684-833

BW	WW	YW	MK	TM	STAY	MARB	RE	BF
0.9	33	68	13	30	5	-.04	.03	.00

BW: 89 lbs.
WW: 616 lbs.
IMF Ratio: 109
 1.19 square inches of REA/cwt

This is another good Rambler son with a great look to him and excellent numbers.



Sire of Lot 47

Lot 48
LMG GILLS ADDICTION 8901
 May 19, 2008 1284362

Pen 15 DKK Addiction N10 BJR JR 107
 923316 DKK Dixie 901

LMG Miss Susett 6079 VGW Rattler 908
 1139689 LMG Susett 746

BW	WW	YW	MK	TM	STAY	MARB	RE	BF
-2.8	26	47	21	34	6	.02	-.07	-.01

BW: 70 lbs.
WW: 706 lbs.
IMF Ratio: 110
 1.10 square inches of REA/cwt

8901 is another top calving ease Addiction son. He performed great on the cow and has the carcass we need. Plus his dam has a 103 MPPA so his daughters should be darn good as well.

Lot 49
LMG GILLS ADDICTION 8678
 May 18, 2008 1284390

Pen 15 DKK Addiction N10 BJR JR 107
 923316 DKK Dixie 901

LMG Miss Dynette 6030 RBJR Advance A709
 1139603 LMG Dynette 3041

BW	WW	YW	MK	TM	STAY	MARB	RE	BF
2.5	37	61	21	40	6	-.01	-.04	-.02

This bull is out of LMG Miss Dynette 3041's daughter. What a great job she did her first time around. This guy is put together right and has everything to become a great one. Check him out.

BW: 92 lbs.
WW: 651 lbs.
IMF Ratio: 104
 1.13 square inches of REA/cwt



Grand Dam of Lot 49

Lot 50
LMG GILLS ADDICTION 8692
 May 21, 2008 1284369

Pen 15 DKK Addiction N10 BJR JR 107
 923316 DKK Dixie 901

LMG Miss Poteet 6066 LMG Gills Power Surge 4569
 1139712 LMG Miss Poteet 2073

BW	WW	YW	MK	TM	STAY	MARB	RE	BF
-2.0	23	41	20	31	5	-0.05	-.20	-.01

BW: 71 lbs.
WW: 656 lbs.
IMF Ratio: 106
 1.06 square inches of REA/cwt

Here is another good calving ease bull that goes back to some of our all time greats like Rattler, Powersurge, and Roxie 344.

Lot 51
LMG GILLS COMBO 8671
 May 28, 2008 1284322

Pen 15 MLK CRK Combination 4149 LSF Combination A301M
 987155 BJR Sun Gal 4X-561

LMG Dynette 6001 HAMMEL Run Cloud 525
 1124901 LMG Dynette 902

BW	WW	YW	MK	TM	STAY	MARB	RE	BF
-0.5	34	68	15	32	8	.12	.02	.00

BW: 78 lbs.
WW: 732 lbs.
IMF Ratio: 136
 1.14 square inches of REA/cwt

Here is an exciting pedigree. The maternal grand dam is none other than LMG Miss Dynette 902, while the maternal grand sire is the great Hammel Run Cloud 525 bull that produced so many great females over the years. We sold a full sister to Combo's dam a few years back to Leonard Smith, NE for \$8500. This line works. Now look at his EPDs, they are as pretty as one could want. His ratios are excellent as well, as he has a 111 weaning, 112 yearling, 136 IMF and 110 REA! So with the performance, carcass, calving ease, and maternal all bred into him that he is already starting to show, I don't think you can go wrong.



Grand Dam of Lot 51

Lot 52
LMG GILLS BULL DAWG 8611
 May 18, 2008 1284125

Pen 16 WR Mr. Red Dawg 5335 BUF CRK Valentino N031
 1046249 TMAS Ms Fortune 114

LMG Thelma 942 LMG Heavenly 115
 669941 LMG Thelma 770

BW	WW	YW	MK	TM	STAY	MARB	RE	BF
2.0	38	61	13	32	8	-.12	.14	.01

BW: 85 lbs.
WW: 676 lbs.
 1.26 square inches of REA/cwt

Here is another powerful Red Dawg son that really stands out.

Lot 53
LMG GILLS BIG DAWG 8641
 May 22, 2008 1284225

Pen 16 WR Mr. Red Dawg 5335 BUF CRK Valentino N031
 1046249 TMAS Ms Fortune 114

LMG Miss Maiden 4115 BIEBER Red Moon 6042
 1009564 LMG Miss Maiden 2010

BW	WW	YW	MK	TM	STAY	MARB	RE	BF
0.7	45	74	25	48	8	-.10	.17	.01

BW: 84 lbs.
WW: 781 lbs.
 1.21 square inches of REA/cwt

Here is a top bull out of an even better cow. His dam is a complete standout as she has a 111 MPPA and a daughter of Bieber Red Moon that goes back to FRR Cop Top 7191ET and is a grand daughter of the great donor cow for us, LMG Maiden 023, her son sells in the fall bulls. Take a look at the performance and EPDs of this guy. Wallace Wock from ND purchased a full brother to this guy last year. We saw him over the summer and he looked great.



Full Brother to Lot 53

Lot 54
LMG GILLS BULL DAWG 8619
 May 8, 2008 1284148

Pen 16 WR Mr. Red Dawg 5335 BUF CRK Valentino N031
 1046249 TMAS Ms Fortune 114

LMG Miss Brandy 1091 VGW Bonus 429
 783471 LMG Miss Brandy 149-885

BW	WW	YW	MK	TM	STAY	MARB	RE	BF
3.7	39	70	15	34	11	-.11	.16	.01

BW: 89 lbs.
WW: 688 lbs.
 1.13 square inches of REA/cwt

If you are looking for a Red Dawg son, you need to be here. These are by far the best group we have had yet. This guy proves it as he is a super looking bull and has great numbers to boot.

Lot 55
LMG GILLS BIG CHIEF 8522-310
 March 4, 2008 1284399

Pen 16 BFCK Cherokee CNYN 4912 BUF CRK CHF 824-1658
 574873 MRM 1431 8611 9109

CCF Julie IR 0001 BJR Hi Ho 916
 743333 CCF Ronda's "Julie"

BW	WW	YW	MK	TM	STAY	MARB	RE	BF
0.9	35	59	15	33	14	.03	.31	.00

BW: ET
WW: 609 lbs.

This is the only Cherokee Canyon son in the entire sale. We sold a full brother last spring that really had the look.

Lot 56
LMG GILLS HEAVENS DOOR 8636
 May 24, 2008 1284204

Pen 16 SRN Heavens Door 2095 LCHMN Hevn's Sake 1002F
 830626 LCHMN Eleanor J1266

LMG Diann 4028 VGW Chateau 128
 968445 LMG Diann 67-848

BW	WW	YW	MK	TM	STAY	MARB	RE	BF
3.2	36	69	12	30	6	-.08	.31	.00

BW: 96 lbs.
WW: 622 lbs.
IMF Ratio: 103
 1.38 square inches of REA/cwt

Here is another good Heavens Door son that scanned a huge REA.



Sire of Lot 56

Lot 57
LMG GILLS RAMBLER 8609
 May 14, 2008 1284122

Pen 16 OHRR 10H Rambler 75R 1025344
 OHRR Dakota Copper 29K
 OHRR Ms Scarlett 10H

LMG Sara 932 669931
 LMG Loaded 0356
 LMG Sara 520

BW	WW	YW	MK	TM	STAY	MARB	RE	BF
1.7	29	52	18	33	5	-.07	-.04	.00

BW: 86 lbs.
WW: 660 lbs.
IMF Ratio: 109
 1.10 square inches of REA/cwt

This guy comes from the famous Sara cow line. Nearly all the Sara's are above average cows, and this girls is as well, as she has a 104 MPPA.

Lot 58
LMG GILLS MAXIMUS 8653
 May 30, 2008 1284289

Pen 16 PIE Maximizer 5052 1029127
 PIE Atlantic 2204
 PIE Power Lady 9077

LMG Miss Jesse 5066 1068600
 SEEGER Marias 366
 LMG Jesse 999

BW	WW	YW	MK	TM	STAY	MARB	RE	BF
2.9	41	68	17	38	8	.04	.12	-.01

BW: 93 lbs.
WW: 671 lbs.
IMF Ratio: 147
 1.17 square inches of REA/cwt

This is another well made Maximizer son that does a lot of things right.

Lot 61
LMG GILLS ADDICTION 8679
 May 16, 2008 1284335

Pen 16 DKK Addiction N10 923316
 BJR JR 107
 DKK Dixie 901

LMG Miss Marie 6077 1139609
 LMG Gills Power Surge 4569
 LMG Marie 3011

BW	WW	YW	MK	TM	STAY	MARB	RE	BF
-3.2	20	37	19	29	6	-.05	-.25	-.01

BW: 65 lbs.
WW: 614 lbs.
 1 square inches of REA/cwt
 Here is another good calving east bull that you will be proud to own.

Lot 62
LMG GILLS HEAVENS DOOR 8695
 May 20, 2008 1284210

Pen 17 SRN Heavens Door 2095 830626
 LCHMN Hevn's Sake 1002F
 LCHMN Eleanor J1266

LMG Lark 4042 968469
 VGW Chateau 128
 LMG Lark 952

BW	WW	YW	MK	TM	STAY	MARB	RE	BF
2.0	33	63	14	30	5	-.16	.15	.00

BW: 90 lbs.
WW: 578 lbs.

8695 is a good Heavens Door son that is full of body and length. The Heavens Door bulls always look alike, they have guts and length, and add pounds at weaning.

Lot 59
LMG GILLS ACCELERATOR 8612
 May 28, 2008 1284133

Pen 16 PIE Accelerator 4028 979303
 PERKS Advance 121R
 PIE Ms Dinero 1035

LMG Freyja 054 745185
 PANHANDLE Atlas
 LMG Freyja 426

BW	WW	YW	MK	TM	STAY	MARB	RE	BF
2.3	25	56	5	18	7	-.08	.13	.00

BW: 88 lbs.
WW: 661 lbs.
 1.11 square inches of REA/cwt

You gotta like this guy as he has a great look to him and is out of a top cow that has a 101 MPPA.



Dam of Lot 59

Lot 63
LMG GILLS MAXIMUS 8700
 June 2, 2008 1284217

Pen 17 PIE Maximizer 5052 1029127
 PIE Atlantic 2204
 PIE Power Lady 9077

LMG Miss Jackie 4100 1009537
 VGW Rattler 908
 LMG Jackie 772

BW	WW	YW	MK	TM	STAY	MARB	RE	BF
1.9	35	59	12	29	7	-0.08	.06	-.01

BW: 91 lbs.
WW: 569 lbs.
 1.27 square inches of REA/cwt
 This is a good bull that is made right, and has a huge ribeye.

Lot 64
LMG GILLS RAMBLER 8613
 June 4, 2008 1284135

Pen 17 OHRR 10H Dakota Rambler 75R 1025344
 OHRR Dakota Copper 29K
 OHRR Ms Scarlett 10H

LMG Sara 066 745204
 PANHANDLE Atlas
 LMG Sara 556

BW	WW	YW	MK	TM	STAY	MARB	RE	BF
3.5	33	61	11	28	5	-.10	.08	.00

BW: 90 lbs.
WW: 659 lbs.
IMF Ratio: 108
 1.22 square inches of REA/cwt

Another good Rambler son that comes out of the good Sara cow line.

Lot 60
LMG GILLS ADDICTION 8680
 May 8, 2008 1284337

Pen 16 DKK Addiction N10 923316
 BJR JR 107
 DKK Dixie 901

LMG Miss Brandy 6003 1139614
 LMG Gills Rattler 3555
 LMG Miss Brandy 2064

BW	WW	YW	MK	TM	STAY	MARB	RE	BF
-2.9	17	33	20	28	6	.03	-.04	-.01

BW: 68 lbs.
WW: 596 lbs.
IMF Ratio: 111
 1.25 square inches of REA/cwt

This good bull goes back to Red CFCC 170K, LMG Gills Rattler 3555, and is a son of DKK Addiction N10. All three of these bulls were used successfully in our program on first calf heifers. Sleep and watch 'em grow!



Sire of Lot 60

Lot 65
LMG GILLS RAMBLER 8632
 June 16, 2008 1284177

Pen 17 OHRR 10H Dakota Rambler 75R 1025344
 OHRR Dakota Copper 29K
 OHRR Ms Scarlett 10H

LMG Sara 3075 912548
 HLH Buster 406 603
 LMG Sara 1063

BW	WW	YW	MK	TM	STAY	MARB	RE	BF
-1.2	27	52	18	31	6	-.09	-.13	-.01

BW: 76 lbs.
WW: 618 lbs.
 1.16 square inches of REA/cwt

This is another good Rambler son that also goes back to the Sara line. Buy both these lots and make some even daughters.

Lot 66
LMG GILLS ACCELERATOR 88630
 June 3, 2008 1284170

Pen 17 PIE Accelerator 4028 979303
 PERKS Advance 121R
 PIE Ms Dinero 1035

LMG Susett 3016 912510
 VGW Rattler 908
 LMG Susett 069

BW	WW	YW	MK	TM	STAY	MARB	RE	BF
2.3	33	63	10	26	6	.03	.06	-.01

BW: 95 lbs.
WW: 703 lbs.

This is a real well made bull. Performance is the name of the game with this guy, as he goes back to both Rattler and Advance.

Lot 67
LMG GILLS ACCELERATOR 8658
 June 7, 2008 1284318

Pen 17 PIE Accelerator 4028 PERKS Advance 121R
 979303 PIE Ms Dinero 1035

LMG Miss Roxie 5155 DKK Addiction N10
 1068686 LMG Roxie 3086

BW	WW	YW	MK	TM	STAY	MARB	RE	BF
-0.2	25	51	17	29	6	-.01	.01	-.01

BW: 82 lbs.
WW: 707 lbs.
IMF Ratio: 120
 1.02 square inches of REA/cwt

Here is a good Accelerator son that is out of a 104 MPPA Addiction daughter.

Lot 69
LMG GILLS ACCELERATOR 8626
 May 22, 2008 1284092

Pen 17 PIE Accelerator 4028 PERKS Advance 121R
 979303 PIE Ms Dinero 1035

LMG Miss Brandy 2064 RED CFCC 170K
 864400 LMG Miss Brandy 940

BW	WW	YW	MK	TM	STAY	MARB	RE	BF
-0.4	19	24	11	21	6	-.02	-.03	.00

BW: 80 lbs.
WW: 640 lbs.
IMF Ratio: 108
 1.52 square inches of REA/cwt

Here is another Accelerator son that is stacked with muscle. Take a look at his huge REA!!!

Lot 71
LMG GILLS COMBO 8677
 June 1, 2008 1284333

Pen 17 MLK CRK Combination 4149 LSF Combination A301M
 987155 BJR Sun Gal 4X-561

LMG Miss Cora 6018 DKK Addiction N10
 1139599 LMG Cora 3059

BW	WW	YW	MK	TM	STAY	MARB	RE	BF
-0.6	29	55	16	31	9	-.02	-.09	.00

BW: 80 lbs.
WW: 710 lbs.
 1.06 square inches of REA/cwt

This good calving ease bull goes back to Addiction, we use both Combination and Addiction on heifers with great success. This guys dam has a 103 MPPA as well.

Lot 68
LMG GILLS HEAVENS DOOR 8803
 May 30, 2008 1284274

Pen 17 SRN Heavens Door 2095 LCHMN Hevn's Sake 1002F
 830626 LCHMN Eleanor J1266

LMG Miss Cherokette 5042 LCC Tassel Executive 61J
 1068582 LMG Cherokette 515-864

BW	WW	YW	MK	TM	STAY	MARB	RE	BF
2.7	36	70	13	31	2	-.11	.03	.00

BW: 86 lbs.
WW: 600 lbs.
IMF Ratio: 101
 1.10 square inches of REA/cwt

This is another deep bodied Heavens Door son.

Lot 70
LMG GILLS COMBO 8688
 May 16, 2008 1284356

Pen 17 MLK CRK Combination 4149 LSF Combination A301M
 987155 BJR Sun Gal 4X-561

LMG Miss Cherokette 6035 PIE Accelerator 4028
 1139673 LMG Cherokette 515-864

BW	WW	YW	MK	TM	STAY	MARB	RE	BF
-0.0	19	48	7	17	6	.06	-.02	.00

BW: 72 lbs.
WW: 624 lbs.
IMF Ratio: 109
 1.19 square inches of REA/cwt

This guy is out of another Cherokette female that has good calving ease!

Lot 72
LMG GILLS ADDICTION 8683
 May 22, 2008 1284177

Pen 26 DKK Addiction N10 BJR JR 107
 923316 DKK Dixie 901

LMG Miss Lass 6083 LMG Gills Power Surge 4569
 1139637 LMG Miss Lass 2014

BW	WW	YW	MK	TM	STAY	MARB	RE	BF
-5.2	15	27	22	29	6	-.04	-.27	-.01

BW: 59 lbs.
WW: 625 lbs.
IMF Ratio: 105
 1.11 square inches of REA/cwt

Alright, if you want a sleep easy, here he is. This guy has a 59 lbs birth weight and a -5.2 birth EPD while weaning off at 625 lbs. So if you want one where you can see all the ball games, and yet have something to wean in the fall. This is the guy for you.



Maternal Grand Sire of Lot 72

Lot 73
LMG GILLS MAXIMIZER 8650
 May 27, 2008 1284275

Pen 26 PIE Maximizer 5052 PIE Atlantic 2204
 1029127 PIE Power Lady 9077

LMG Miss Susette 5043 LCC Tassel Executive 61J
 1068583 LMG Srsett 45-865

BW	WW	YW	MK	TM	STAY	MARB	RE	BF
0.7	36	61	19	37	8	-.13	.21	-.01

BW: 82 lbs.
WW: 675 lbs.
 1.26 square inches of REA/cwt

This is a good looking, good numbered Maximizer son that has a super Executive dam that has a 103 MPPA.



Maternal Grand Sire of Lot 73

Lot 75
LMG GILLS ADDICTION 8675
 May 7, 2008 1284331

Pen 26 MLK CRK Combination 4149 LSF Combination A301M
 987155 BJR Sun Gal 4X-561

LMG Miss Cinnamon 6033 LMG Big Spread 4533
 1139597 LMG Miss Cinnamon 3064

BW	WW	YW	MK	TM	STAY	MARB	RE	BF
-1.8	27	51	9	23	7	.05	-.15	.00

BW: 68 lbs.
WW: 679 lbs.
 1.19 square inches of REA/cwt

8675 is another good calving ease son that was born with a 68 lbs birth weight and weaned off at nearly 700 lbs.

Lot 77
LMG GILLS MAXIMIZER 8904
 May 30, 2008 1291482

Pen 26 PIE Maximizer 5052 PIE Atlantic 2204
 1029127 PIE Power Lady 9077

LMG Freyja 3024 VGW Rattler 908
 912581 LMG Freyja 704

BW	WW	YW	MK	TM	STAY	MARB	RE	BF
-0.5	34	56	18	35	7	-.06	-.07	-.01

BW: 81 lbs.
WW: 631 lbs.
IMF Ratio: 101
 1.09 square inches of REA/cwt

Here is a good bull that has a super dam. She has a 103 MPPA and is out of Rattler 908.

Lot 74
LMG GILLS MAX 8600
 May 28, 2008 1284093

Pen 26 PIE Maximizer 5052 PIE Atlantic 2204
 1029127 PIE Power Lady 9077

LMG Susett 681 LMG Reload 2957
 538707 LMG Susett 1209-957

BW	WW	YW	MK	TM	STAY	MARB	RE	BF
0.5	32	58	16	32	8	-.06	-.01	-.01

BW: 82 lbs.
WW: 632 lbs.
 1.09 square inches of REA/cwt

This guy is out of the oldest cow on the ranch. We finally took her to town this fall, as she started to show her age some and we feel we have younger cattle better and we could replace her. This spring she would be 14 years old. Use this bull to get some daughters you would like to keep around to grow up with your kids.

Lot 76
LMG GILLS ADDICTION 8809
 May 22, 2008 1284350

Pen 26 DKK Addiction N10 BJR JR 107
 923316 DKK Dixie 901

LMG Miss Diann 6042 LMG Gills Power Surge 4569
 1139662 LMG Diann 908

BW	WW	YW	MK	TM	STAY	MARB	RE	BF
-0.6	25	42	23	36	6	-.05	-.04	-.01

BW: 77 lbs.
WW: 649 lbs.
 1.22 square inches of REA/cwt

This good calving ease Addiction son does it right. He goes back to the dam of the Select Sires calving ease leader LMG Gills Custer, LMG Miss Diann 908.

Lot 78
LMG GILLS NEBRASKA 8804
 June 20, 2008 1284307

Pen 26 LMG Gills Bond 5604 NSF Bond L007
 1068537 LMG Sara 3027

LMG Miss Cora 5150 DKK Addiction N10
 1068622 LMG Cora 3059

BW	WW	YW	MK	TM	STAY	MARB	RE	BF
-1.3	29	51	19	33	7	.07	.00	-.01

BW: 82 lbs.
WW: 642 lbs.
IMF Ratio: 136
 1.14 square inches of REA/cwt

This is another double bred calving ease bull for all you heifer breeders.

Lot 79
LMG GILLS RAMBLER 8637
 May 10, 2008 1284206

Pen 26 OHRR 10H Dakota Rambler 75R OHRR Dakota Copper 29K
 1025344 OHRR Ms Scarlett 10H

LMG Roxie 4037 VGW Rattler 908
 968459 LMG Roxie 915

BW	WW	YW	MK	TM	STAY	MARB	RE	BF
1.7	35	56	16	33	3	.03	-.03	-.01

BW: 84 lbs.
WW: 694 lbs.
IMF Ratio: 136
 1.14 square inches of REA/cwt



Full Brother of Lot 79

This is a good Rambler son that is a full brother to a bull that Kevin Berke, NE purchased last year. He was one of my overall favorites then. This guy has it, as his dam has a 103 MPPA.

Lot 80
LMG GILLS RAMBLER 8634
 June 6, 2008 1284198

Pen 26 OHRR 10H Dakota Rambler 75R OHRR Dakota Copper 29K
 1025344 OHRR Ms Scarlett 10H

LMG MTX Robin 4001 VGW Rattler 908
 968392 SHHM MTX Robin 38H

BW	WW	YW	MK	TM	STAY	MARB	RE	BF
0.9	32	60	15	31	5	-.04	.06	-.01

BW: 82 lbs.
WW: 611 lbs.
IMF Ratio: 105
 1.27 square inches of REA/cwt

8634 is another good Rambler bull that goes back to a Rattler cow that has a 102 MPPA.

The Next two bulls were pulled out of the group and used. We used Lot 84 on the a small group of registered cows, and 85 was used on a group of commercial heifers. Once you pull them out of the group, you can't put them back as they will get picked on, injured and/or killed. So we wintered them in with the fall bulls, as they weren't quite as grumpy yet and they got along fine. We are penning these separate sale day and selling them at the end of the two year olds. They are the quality to start any sale in the country. We had enough confidence to use them in our program, and I think you will too.

Lot 84
LMG GILLS HEAVENS DOOR 8648
 May 5, 2008 1284264

Pen 40 SRN Heavens Door 2095 LCHMN Hevn's Sake 1002F
 830626 LCHMN Eleanor J1266

LMG Miss MTX 5037 GILCHRIST Coyote B225
 1068570 LMG MTX 422-830

BW	WW	YW	MK	TM	STAY	MARB	RE	BF
3.8	46	83	14	37	6	-.10	.31	-.01

BW: 91 lbs.
WW: 738 lbs.
 1.34 square inches of REA/cwt
Retaining a 1/4 sement interest!

Wow, is this a good bull! He may not be the most pretty bull you have ever seen, but boy is he complete. We used him on a handful of registered cows this summer as we wanted to sample him a bit and get some more of his pedigree in our herd. He is a very deep-sided bull, thick made, good legs under him, and is full of performance. His dam is a LMG MTX 830 daughter that has a 105 MPPA and out of the great Gilchrist Coyote bull. He goes back to Barney as well. His dam is a great uddered cow that is very easy doing and has great feet under her. Just the kind of cow that makes a true herd sire. Not only is he stacked with greatness, but he scanned a huge REA as well. Step up boys and take him home!

Lot 85
LMG GILLS COPPER 8505-238
 March 6, 2008 1266229

Pen 40 OHRR Dakota Copper 29K LCHMN Copper Rob 1204D
 709597 MESSMER Ophelia 9502

LARSON Suz-Amber 827 LMN Impressive Rob 1095B
 604381 LARSON Suz-Amber 911

BW	WW	YW	MK	TM	STAY	MARB	RE	BF
2.2	36	64	20	38	6	-.13	-.02	.01

BW: ET
WW: 760 lbs.

Here is a top notch Dakota Copper 29K son that needs some attention. He is dark, smooth made, and deep bodied. I think you will like him too.

Lot 81
LMG GILLS MAXIMUS 8649
 June 7, 2008 1284269

Pen 26 PIE Maximizer 5052 PIE Atlantic 2204
 1029127 PIE Power Lady 9077

LMG Miss Daorv 5083 LCC Tassel Executive 61J
 1068575 LMG Miss Daorv 2046

BW	WW	YW	MK	TM	STAY	MARB	RE	BF
1.7	40	61	24	44	6	-.01	-.02	-.01

BW: 86 lbs.
WW: 713 lbs.
IMF Ratio: 125
 1.08 square inches of REA/cwt

You have to love this line-up. The dam is out of the famous Daorv cow family, while Maximizers dam has a 110 MPPA.

Lot 82
LMG GILLS RAMBLER 8657
 May 10, 2008 1284311

Pen 26 OHRR 10H Dakota Rambler 75R OHRR Dakota Copper 29K
 1025344 OHRR Ms Scarlett 10H

LMG Miss Maxine 5157 NSF Bond L007
 1068626 LMG Maxine 3100

BW	WW	YW	MK	TM	STAY	MARB	RE	BF
0.2	24	59	11	23	4	-.06	-.02	-.01

BW: 79 lbs.
WW: 550 lbs.
 1.19 square inches of REA/cwt

Lots of good Rambler sons this year. Have your pick.

Lot 83
LMG GILLS NEBRASKA 8638
 May 31, 2008 1284214

Pen 26 LMG Gills Bond 5604 NSF Bond L007
 1068537 BJR Sun Gal 4X-561

LMG Princess 4052 VGW Chateau 128
 968489 CFRA T3 Princess

BW	WW	YW	MK	TM	STAY	MARB	RE	BF
-1.9	32	60	20	36	7	.02	.12	-.01

BW: 81 lbs.
WW: 709 lbs.

Here is an excellent Bond son that is out of a great cow that has a 105 MPPA. She raised one of the best bulls that sold last fall. She quietly does it year after year.



Hollenbeck Replacement Heifers



Lot 84

Lot 86

LMG GILLS RAMBLER 8813
September 11, 2008 1312587

Pen 21 OHRH 10H Dakota Rambler 75R OHRH Dakota Copper 29K
1025344 OHRH Ms Scarlett 10H

LMG Maiden 023 FORSTER CPRTOP 7191 ET
745295 LMG Maiden 331-809

BW: 89 lbs
BW: 724 lbs.



Brother of Lot 86

BW	WW	YW	MK	TM	STAY	MARB	RE	BF
2.2	32	57	22	38	7	-.08	-.10	.00

Retaining a 1/4 sement interest!

Rambler 8813 is definitely a herdsire prospect and needs some big attention sale day. He is very deep and long made, along with having good muscle, great feet and legs, and is out of an outstanding cow. His dam is a top donor cow for us and has a 107 MPPA. She has been flushed and we sold several outstanding sons out of her a couple years ago. Good ranchers like Sandy Willow Red Angus, Dan Materi, and Rapid Creek Ranch to name a few has sons walking their ranch. 8813 is her natural calf, and in my opinion he is her best yet. What makes him even more exciting is that his sire is the great female making OHRH Dakota Rambler 75R. With both Rambler and Cop Top 7191ET in the pedigree exciting things will happen. We had a registered Angus breeder here this summer and he was looking at all the bulls on grass, and he said that this was his pick out of all the bulls he saw. This guy is as picky as I am when it comes to selecting bulls, but don't take our word for it, come and see for yourself.



Lot 86

Lot 87

LMG GILLS MAJOR 8827
August 25, 2008 1312645

Pen 21 LCC Major League A502M BFCK Cherokee CNYN 4912
832407 KRN Reba's Robin

COP 1412J Bond M061 LCC Vaquero 1412J
838424 MRM 9013 9317

BW	WW	YW	MK	TM	STAY	MARB	RE	BF
-1.6	37	70	20	38	10	.04	.03	-.01

BW: ET
WW: 700 lbs.

Major 8827 is very impressive and needs some attention. His sire is the famous Major League bull that sold for \$180,000 as a yearling to Genex and a group of breeders. This guys dam is a top donor cow that is a daughter of the ABS owned bull LCC Vaquero and goes back to the super Hobo line.

Lot 89

LMG GILLS PRINCE 8828
September 11, 2008 1312623

Pen 21 LMG Gills Heavens Door 5565 SRN Heavens Door 2095
1068513 LMG Roxie 1080

LMG Miss Poteet 2037 RED CFCC 170K
864409 LMG Poteet 967

BW	WW	YW	MK	TM	STAY	MARB	RE	BF
0.7	34	56	20	37	5	-.07	.00	.00

BW: 86 lbs.
WW: 725 lbs.

Here is a very impressive, good numbered bull that does a lot right. His dam goes back to Rambo 502 and has a 107 MPPA.

Lot 91

WR MR DOC HOLIDAY 8501
August 25, 2008 1283939

Pen 21 WEBR Doc Holiday 2N MLK CRK Cub 722
887993 WEBR Ms Dolly 1L

WR Ms. Rachael 512 BUF CRK Valentino N031
1046207 BIEBER Miss Ary 6390

BW	WW	YW	MK	TM	STAY	MARB	RE	BF
-1.0	33	61	18	34	11	.04	-.12	.00

BW: 66 lbs.
WW: 714 lbs.

We purchased the dam to 8501 from Weidenbach Red Angus at the Santa Sale. I think she is a very well made cow that does it right. This bull was at her side when we got her, that is why he has their prefix on his name. This guy is very well made, classy and did great on grass over the summer. I think you will like him.

Lot 88

LMG GILLS GET R DONE 8812
September 16, 2008 1312643

Pen 21 PIE Get R Done 684 PIE Chicawa 366
1137479 PIE Red Ruby 4094

ATKN-Miss Tidybee 4X 03020 BJR Monu 4X-303
965217 BJR Tidy Bee 677-6186

BW	WW	YW	MK	TM	STAY	MARB	RE	BF
0.2	40	68	23	43	11	-.06	.19	-.01

BW: ET
WW: 795 lbs.

Wow look at this weaning weight!!! Get R Done is a very impressive bull and when crossed with The Tidy Bee line fun things happen and this bull has them all. I really like him and I am sure you will too.

Lot 90

LMG GILLS MAXIMUS 8807
August 20, 2008 1284350

Pen 21 PIE Maximizer 5052 PIE Atlantic 2204
1029127 PIE Power Lady 9077

LMG Miss Sara 5033 SRN Heavens Door 2095
1068566 LMG Sara 49-804

BW	WW	YW	MK	TM	STAY	MARB	RE	BF
-1.3	43	77	23	45	7	-.08	.18	.00

BW: 70 lbs.
WW: 786 lbs.

8807 is another good made bull that goes back to the great Sara line. Take a look at her grand dam's photo, and asked yourself if you want a cow herd that look like her. Oh ya check out this guys numbers!!!



Grand Dam of Lot 90



Dam of Lot 91

Lot 92
LMG GILLS RAMBLER 8835
 August 20, 2008 1312605

Pen 21 OHRR 10H Dakota Rambler 75R OHRR Dakota Copper 29K
 1025344 OHRR Ms Scarlett 10H

LMG Miss Georgia 4106 VGW Rattler 908
 1009544 LMLG Georgia 914

BW	WW	YW	MK	TM	STAY	MARB	RE	BF
3.8	40	69	16	36	4	-.06	.00	.00

BW: 95 lbs.
WW: 703 lbs.

This good Rambler is a deep made bull that will give you some easy keeping high performing daughters.



Grand Sire of Lot 92

Lot 93
LMG GILLS RAMBLER 8833
 August 19, 2008 1312580

Pen 21 OHRR 10H Dakota Rambler 75R OHRR Dakota Copper 29K
 1025344 OHRR Ms Scarlett 10H

LMG Rose 548-867 PIE Copyright 419
 629297 LMG Rose 548

BW	WW	YW	MK	TM	STAY	MARB	RE	BF
3.8	29	52	15	30	6	-.14	.01	.00

BW: 95 lbs.
WW: 660 lbs.

This good Rambler son has a dam that has a 103 MPPA. These fall bulls will cover a lot of cows and stay in good condition while doing it.

Lot 97
LMG GILLS RAMBLER 8818
 September 6, 2008 1312589

Pen 22 OHRR 10H Dakota Rambler 75R OHRR Dakota Copper 29K
 1025344 OHRR Ms Scarlett 10H

LMG Miss Lass 2050 BJR Monu 4X-303
 864326 LMG Lass 430

BW	WW	YW	MK	TM	STAY	MARB	RE	BF
2.7	30	54	15	30	6	-.19	.06	-.01

BW: 92 lbs.
WW: 603 lbs.

We are selling lots of Rambler sons through this sale and they are all very good. It is a great opportunity for someone to come in and buy a group of half brothers and turn them all out in the same pasture to get some real consistent sons and daughters. Remember, a big group of calves always sell better than several smaller groups.

Lot 98
LMG GILLS MAXIMUS 8814
 August 28, 2008 1312613

Pen 22 PIE Maximizer 5052 PIE Atlantic 2204
 1029127 PIE Power Lady 9077

LMG Miss Stephanie 5086 SRN Heavens Door 2095
 1068578 LMG Miss Stephanie 2076

BW	WW	YW	MK	TM	STAY	MARB	RE	BF
2.5	46	76	16	39	5	-.06	.11	.00

BW: 88 lbs.
WW: 670 lbs.

This is another long bodied Maximizer son that will get your attention sale day.

Lot 94
LMG GILLS CHECKOUT 8998
 September 8, 2008 1312654

Pen 22 LCC Check Out A703L BFCK Cherokee CNYN 4912
 770936 MISS LL Rob Low 925

FORSTER Hi Queen 083 GRNO BT Ramrod 3008G
 725512 LMG Daorv 841

BW	WW	YW	MK	TM	STAY	MARB	RE	BF
2.2	47	74	14	37	9	-.07	.01	.00

BW: ET
WW: 661 lbs.

This big stout bull is a son to the one of the best Cherokee Canyon sons available. The Whitley's from AL owns him and just love their daughters. This guy will work for you.

Lot 95
LMG GILLS RAMBLER 8838
 September 2, 2008 1312592

Pen 22 OHRR 10H Dakota Rambler 75R OHRR Dakota Copper 29K
 1025344 OHRR Ms Scarlett 10H

LMG Miss Maxine 2028 VGW Rattler 908
 1068626 LMG Maxine 928

BW	WW	YW	MK	TM	STAY	MARB	RE	BF
3.8	40	68	11	31	4	-.09	-.05	.00

BW: 96 lbs.
WW: 707 lbs.

Here is another powerful Rambler out of a top Rattler daughter that has a 101 MPPA.

Lot 99
LMG GILLS PRINCE 8844
 August 30, 2008 1312582

Pen 22 LMG Gills Heavens Door 5565 SRN Heavens Door 2095
 1068513 LMG Roxie 1080

LMG Srsett 912 LMG Dakota Coyote 1117
 669911 LMG Susett 681

BW	WW	YW	MK	TM	STAY	MARB	RE	BF
2.5	29	53	11	26	7	-.05	.12	.00

BW: 92 lbs.
WW: 601 lbs.

The dam to this bull always gets it done. She is an 11 year old cow and never misses. Jerry Leibel has purchased 2 sons out of her as he has really liked them. He always sells a good group of replacement heifers that are in strong demand.



Dam of Lot 99

Lot 100
LMG GILLS GET R DONE 8999
 September 4, 2008 1312652

Pen 22 PIE Get R Done 684 PIE Chicawa 366
 1137479 PIE Red Ruby 4094

LSF Rebalas 901 N3022 LMAN King Rob 8621
 909005 GLACIER Rebala

BW	WW	YW	MK	TM	STAY	MARB	RE	BF
1.0	37	65	25	43	10	.01	.28	.00

BW: ET
WW: 697 lbs.

Here is a very exciting bull. I wish I had a photo of him, but I don't. He is a big stout, very well made bull that does it all right. His sire is the \$75,000 PIE Get R Done bull. I saw him as a yearling and really like him. He was just a little out of our price range. 8999's dam is a full sister to the great Glacier Chateau bull that was used so hard all over the world. This is a cross that needs to be recognized by even the most strictest purebred breeders. Come and see him for yourself.

Lot 96
LMG GILLS RAMBLER 8842
 September 9, 2008 1312600

Pen 22 OHRR 10H Dakota Rambler 75R OHRR Dakota Copper 29K
 1025344 OHRR Ms Scarlett 10H

LMG Marie 3056 LMG Gills Monument 1504
 912653 LMG Marie 983

BW	WW	YW	MK	TM	STAY	MARB	RE	BF
4.3	44	83	22	44	5	-.17	-.04	.00

BW: 95 lbs.
WW: 786 lbs.

Here is an exciting combination. This Rambler sired bull is out of a top Gills Monument 1504 daughter that has a high MPPA of 108. She is an awesome cow. His grand dam is selling through this sale in the fall pairs. Check her out sale day. She is a great cow as well. The daughters out of this bull should be outstanding.



Lot 96

Lot 101
LMG GILLS MULBERRY 8997
 August 26, 2008 1312653

Pen 22 RED Fine Line Mulberry 26P RED Compass Mulberry 449M
 1151261 RED Dus Fayette 8G

TW Dina 2205 LMAN Robin Hood 1174B
 605797 PRF Dina P236

BW	WW	YW	MK	TM	STAY	MARB	RE	BF
2.4	49	92	27	52	2	.00	.16	.00

BW: ET
WW: 615 lbs.

This guys dam is one of the absolute best cows I have ever seen. She is very deep ribbed and easy fleshing, thick made, great feet and legs, has a long extended neck and produces like crazy. She has a 110 MPPA and I wish I owned her. But flushing embryos is a great tool and can get me some offspring as well. The sire is the super looking Mulberry bull that sired the high selling bull for us last spring to Erdman Angus. This guy is very impressive and fancy made. Come get yourself some Mulberry.



Sire of Lot 101



Dam of Lot 101

Lot 102
LMG GILLS MAXIMUS 8826
 August 19, 2008 1312579

Pen 22 PIE Maximizer 5052 PIE Atlantic 2204
 1029127 PIE Power Lady 9077

LMG Sara 628-844 LMG Heavenly 115
 629275 LMG Sara 628

BW	WW	YW	MK	TM	STAY	MARB	RE	BF
-0.1	37	60	19	37	7	-.10	-.03	-.01

BW: 85 lbs.
WW: 734 lbs.

This is another good Maximizer son out of a good cow.

Lot 103
LMG GILLS RAMBLER 8823
 August 27, 2008 1312620

Pen 23 OHRR 10H Dakota Rambler75R OHRR Dakota Copper 29K
 1025344 OHRR Ms Scarlett 10H

LMG 902 Miss Dynette 5206 DKK Addiction N10
 1091609 LMG Dynette 902

BW	WW	YW	MK	TM	STAY	MARB	RE	BF
2.8	34	56	20	37	6	-.08	.05	.00

BW: 95 lbs.
WW: 661 lbs.

AHHH, another good bull that is out of a LMG Dynette 902 daughter. These cows really get the job done. This line is known for extremely easy keep cattle, with lots of muscle and eye appeal.



Lot 104

Lot 104
LMG GILLS MAXIMUS 8836
 August 27, 2008 1312603

Pen 23 PIE Maximizer 5052 PIE Atlantic 2204
 1029127 PIE Power Lady 9077

LMG Poteet 4044 RED CFCC 170K
 968472 LMG Poteet 967

BW	WW	YW	MK	TM	STAY	MARB	RE	BF
0.2	33	54	20	37	7	-.04	-.01	.00

BW: 82 lbs.
WW: 681 lbs.

This guys dam has a 102 MPPA.

Lot 105
LMG GILLS MAXIMUS 8819
 September 10, 2008 1312626

Pen 23 PIE Maximizer 5052 PIE Atlantic 2204
 1029127 PIE Power Lady 9077

LMG Miss Cocoa 5020 SRN Heavens Door 2095
 1068554 LMG Cocoa 057

BW	WW	YW	MK	TM	STAY	MARB	RE	BF
1.5	38	63	15	34	5	-.08	.12	.00

BW: 80 lbs.
WW: 645 lbs.

All the Maximizer sons have a little more length than the average and that is where the extra pounds come from on sale day, and pounds equals money!

Lot 106
LMG GILLS MAXIMUS 8805
 August 16, 2008 1312614

Pen 23 PIE Maximizer 5052 PIE Atlantic 2204
 1029127 PIE Power Lady 9077

LMG Miss Roxie 5049 SRN Heavens Door 2095
 1068585 LMG Roxie 318-887

BW	WW	YW	MK	TM	STAY	MARB	RE	BF
-0.6	38	69	20	39	6	-.09	.13	.00

BW: 72 lbs.
WW: 686 lbs.

Here is a very good all around bull from his looks to his performance and to his numbers.

Lot 107
LMG GILLS GET R DONE 8806
 September 16, 2008 1312641

Pen 23 PIE Get R Done 684 PIE Chicawa 366
 1137479 PIE Red Ruby 4094

ATKN-Miss Tidybee 4X 03020 BJR Monu 4X-303
 965217 BJR Tidy Bee 677-6186

BW	WW	YW	MK	TM	STAY	MARB	RE	BF
0.2	40	68	23	43	11	-.06	.19	-.01

BW: ET
WW: 719 lbs.

Here is another good Get R Done bull out of the famous Tidy Bee cow line. Daughters out of her should be great cows. Take them both home!

Lot 109
LMG GILLS COMBO 8810
 August 29, 2008 1312621

Pen 23 MLK CRK Combination 4149 LSF Combination A301M
 987155 BJR Sun Gal 4X-561

LMG Miss Brandy 6314 SRN Heavens Door 2095
 1156668 LMG Brandy 058

BW	WW	YW	MK	TM	STAY	MARB	RE	BF
1.8	35	71	9	26	6	.01	.02	.00

BW: 84 lbs.
WW: 682 lbs.

These Combination sons are all very smooth made and really eye appealing cattle.

Lot 111
LMG GILLS CONTINUANCE 88815
 September 7, 2008 1312644

Pen 24 4L 323 Continuance R59N VDAR Rambo 323
 89623 4L Ms Make My Day R875

ATKN-Miss Tidybee 4X 03020 BJR Monu 4X-303
 965217 BJR Tidy Bee 677-6186

BW	WW	YW	MK	TM	STAY	MARB	RE	BF
0.8	41	71	19	39	8	-.05	-.08	-.01

BW: ET
WW: 707 lbs.

I really like the Continuance bulls. We sold a few a couple years ago and Roger Aberle picked up a couple full brothers. This guys dam is a great cow and has the perfect shaped udder.

Lot 108
LMG GILLS PRINCE 8811
 August 25, 2008 1312590

Pen 23 LMG Gills Heavens Door 5565 SRN Heavens Door 2095
 1068513 LMG Roxie 1080

LMG Miss Maiden 2039 RED CFCC 170K
 864350 LMG Maiden 331-809

BW	WW	YW	MK	TM	STAY	MARB	RE	BF
-1.7	25	43	18	31	6	-.12	-.04	.00

BW: 75 lbs.
WW: 632 lbs.

Here is a good calving ease bull that is out of a smooth made Heavens Door bull that we raised. His dam is the great LMG Roxie 1080 cow that is also the dam of LMG Gills Vin Diesel.

Lot 110
LMG GILLS COMBO 8847
 September 30, 2008 1312622

Pen 23 MLK CRK Combination 4149 LSF Combination A301M
 987155 BJR Sun Gal 4X-561

LMG Miss Maxine 6315 SRN Heavens Door 2095
 1156674 LMG Miss Maxine 2028

BW	WW	YW	MK	TM	STAY	MARB	RE	BF
-0.5	33	68	7	23	6	.03	-.03	.00

BW: 72 lbs.
WW: 631 lbs.

This is another good calving ease type bull that should do you some good.

Lot 112
LMG GILLS MULBERRY 8831
 September 7, 2008 1312646

Pen 24 RED Fine Line Mulberry 26P RED Compass Mulberry 449M
 1151261 RED Dus Fayette 8G

CCF-ATKN Coppertop 0246 MABES Rambo Tuo
 872223 MISS Forster CPRTOP 591

BW	WW	YW	MK	TM	STAY	MARB	RE	BF
1.9	39	72	25	44	4	-.05	.00	.00

BW: ET
WW: 704 lbs.

This is another good Mulberry son that I like a lot. The Mulberry's are all real long bodied, heavily muscled cattle that have a great look to them. All his offspring have the same look to them. I would love to see a load of steer calves sired by him, they would top the market every week. This guy will do the same.



Sire of Lot 112

Lot 113
LMG GILLS RAMBLER 8817
 August 27, 2008 1312619

Pen 24 OHRR 10H Dakota Rambler 75R OHRR Dakota Copper 29K
 1025344 OHRR Ms Scarlett 10H

LMG 902 Miss Dynette 5203 DKK Addiction N10
 1091607 LMG Dynette 902

BW	WW	YW	MK	TM	STAY	MARB	RE	BF
2.8	33	56	20	37	5	-.08	.05	.00

BW: 95 lbs.
WW: 651 lbs.

The Dynette cow has done us more good than any other animal we have owned.

Lot 114
LMG GILLS RAMBLER 8840
 September 23, 2008 1312624

Pen 24 OHRR 10H Dakota Rambler 75R OHRR Dakota Copper 29K
 1025344 OHRR Ms Scarlett 10H

LMG Lydia 3026 VGW Chateau 128
 912585 LMG Lydia 769

BW	WW	YW	MK	TM	STAY	MARB	RE	BF
2.9	33	61	23	40	6	-.13	.05	.00

BW: 95 lbs.
WW: 703 lbs.

The Lydia line has always worked well for us. This girl has a 104 MPPA.

Lot 119
LMG GILLS PRINCE 8843
 October 4, 2008 1312604

Pen 25 LMG Gills Heavens Door 5565 SRN Heavens Door 2095
 1068513 LMG Roxie 1080

LMG Lady 4046 SRN Heavens Door 2095
 968474 LMG Lady 973

BW	WW	YW	MK	TM	STAY	MARB	RE	BF
-1.5	30	57	18	33	3	-.14	.16	.00

BW: 76 lbs.
WW: 646 lbs.

This guy is double bred Heavens Door. He should pass on a lot of body to his offspring.

Lot 120
LMG GILLS PRINCE 8825
 August 18, 2008 1312583

Pen 25 LMG Gills Heavens Door 5565 SRN Heavens Door 2095
 1068513 LMG Roxie 1080

LMG Star 916 LMG Loaded 0356
 669915 LMG Star 459

BW	WW	YW	MK	TM	STAY	MARB	RE	BF
-1.6	27	49	15	29	6	-.05	.10	.00

BW: 74 lbs.
WW: 692 lbs.

This good calving ease bull is out of an 11 year old cow.

Lot 115
LMG GILLS RED DAWG 8822
 August 30, 2008 1312628

Pen 24 WR Mr. Red Dawg 5335 BUF CRK Valentino N031
 1046249 TMAS Ms Fortune 114

WR Ms. Karen 500 BIEBER Make Mini 7249
 1046261 3R Karen DA 454B 23L

BW	WW	YW	MK	TM	STAY	MARB	RE	BF
3.2	46	84	19	42	9	.01	.29	.00

BW: 92 lbs.
WW: 709 lbs.

Here is the only Red Dawg son we have in this fall group of bulls. But boy is he a good one. His dam came to us from Weidenbach Red Angus as we purchased her through the SD State Red Angus female sale a couple years ago. She has done a good job for us. If you didn't get your Red Dawg in the two-year olds, here is one of your last chances.

Lot 116
LMG GILLS KNIGHT 8834
 August 30, 2008 1312649

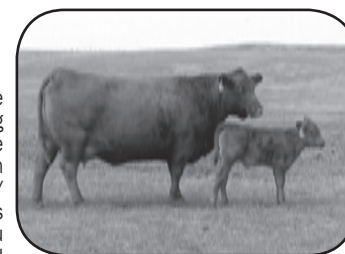
Pen 24 RED YY Red Knight 640F RED YY 23L Topper 408D
 601995 RED Top Goldie 40U

LMG Sara 328-817 BUF CRK CHF 824-1658
 629248 LMG Sara 328

BW	WW	YW	MK	TM	STAY	MARB	RE	BF
-1.0	23	45	19	30	11	.03	.04	00

BW: ET
WW: 608 lbs.

Waiting on test results for OS
 Here is a female making machine. The dam is the great LMG Miss Sara 817, which is also selling through this sale. She knows how to put some rib shape into her calves. She has always been a breed favorite. The sire is the famous RED YY Knight bull up in Canada. His strong point are his daughters. With the combination of these two, you should get some of the best cows ever produced by our program.



Dam of Lot 116

Lot 121
LMG GILLS MAXIMUS 8824
 August 22, 2008 1312627

Pen 25 PIE Maximizer 5052 PIE Atlantic 2204
 1029127 PIE Power Lady 9077

LMG Miss Poteet 5081 BCRR Gemstone 346
 1068573 LMG Miss Poteet 2037

BW	WW	YW	MK	TM	STAY	MARB	RE	BF
0.7	39	64	22	42	8	-.05	.01	.00

BW: 82 lbs.
WW: 737 lbs.

Another long bodied bull that goes back to Barney.

Lot 122
LMG GILLS PRINCE 8841
 August 30, 2008 1312594

Pen 25 LMG Gills Heavens Door 5565 SRN Heavens Door 2095
 1068513 LMG Roxie 1080

LMG Cora 3069 LMG Run Cloud 5109
 912539 LMG Cora 1046

BW	WW	YW	MK	TM	STAY	MARB	RE	BF
-1.5	28	49	16	30	5	-.05	.09	.00

BW: 78 lbs.
WW: 627 lbs.

Here is another good calving ease type bull.

Lot 117
LMG GILLS GET R DONE 88809
 September 9, 2008 1312642

Pen 24 PIE Get R Done 684 PIE Chicawa 366
 1137479 PIE Red Ruby 4094

ATKN-Miss Tidybee 4X 03020 BJR Monu 4X-303
 965217 BJR Tidy Bee 677-6186

BW	WW	YW	MK	TM	STAY	MARB	RE	BF
0.2	40	68	23	43	11	-.06	.19	-.01

BW: ET
WW: 673 lbs.

There are a few of these Get R Done's by Tidy bee and they are all good. I like the pedigree and their looks, and to top it off, they have great numbers.

Lot 118
LMG GILLS GOLDEN 88804
 September 16, 2008 1312640

Pen 24 LCHMN Gold Robber 1909E LMAN King Rob 8621
 492416 LEACHMAN Larkaba 6384

FORSTER Copprqueen 7177 PBC D0202 6M H0904
 598240 MISS Forster Cprtop 591

BW	WW	YW	MK	TM	STAY	MARB	RE	BF
1.0	29	54	26	40	6	.03	.12	.03

BW: ET
WW: 602 lbs.

This guys dam is out of about as proven pedigree as you will find. Her sire was born in 1995 and her dam was born in 1997 and is a daughter of the great LMG Daorv 841 that we raised. If you don't want any surprises, this guy is for you.



Dam of Lot 118

Lot 123
LMG GILLS MAXIMUS 8802
 September 17, 2008 1312610

Pen 25 PIE Maximizer 5052 PIE Atlantic 2204
 1029127 PIE Power Lady 9077

LMG Miss Lass 5016 LMG Gills Buster 3512
 1068550 LMG Lass 042

BW	WW	YW	MK	TM	STAY	MARB	RE	BF
3.1	34	57	16	33	8	-.08	-.01	-.01

BW: 89 lbs.
WW: 643 lbs.

Here is a well made bull that is put together the way you like to see them.

Lot 124

LMG GILLS LITTLE BRO 8890
September 18, 2008 1312651

Pen 25 RED Compass Mulberry 449M RED HR Rambo ET 91K
CAN:1128419 RED Brylor Miss Roc 20H

RED DUS Fayette 8G SILVEIRAS Redford
CAN: 949458 RED MC Dougall Fayette 59A

BW: ET
BW: 617 lbs.



Dam of Lot 124

BW	WW	YW	MK	TM	STAY	MARB	RE	BF
0.7	36	66	22	40	5	NA	NA	NA

This is an exciting lot!!! Little Bro is none other than a full brother to RED Fine Line Mulberry 26P! The Canadian sensation that has taken the world by storm. Lots of champions have been crowned to both Mulberry and his offspring. Mulberry is one of the absolute best looking bulls the breed has ever seen. Semen has been sold all over the globe out of him and it has no signs of slowing down either. Our high selling bull last year was a Mulberry son, and several other sons and daughters all over the country have been topping sales. I have never seen as much excitement over a bull before, and it is all for good reason. These cattle are the real deal. We sold a handful of his sons last year and I saw them late summer and they all held their condition great. The daughters of Mulberry are awesome and his numbers continue to get better and better. Little Bro is a very well made bull in a moderate frame. He is an embryo calf and came to us a little later than I had hoped and he wasn't on a very good recip cow, so he is a little behind the rest of the fall born bulls, but that doesn't take away his quality. You really need to come get him and turn him out. You won't regret it!!!



Sire of Lot 124

Lot 125

LMG GILLS RAMBLER 8803
September 21, 2008 1312597

Pen 25 OHRR 10H Dakota Rambler 75R OHRR Dakota Copper 29K
1025344 OHRR Ms Scarlett 10H

LMG Cora 3037 RED CFCC 170K
912615 LMG Cora 541-879

BW	WW	YW	MK	TM	STAY	MARB	RE	BF
0.2	23	40	17	28	5	-.08	-.05	.00

BW: 83 lbs.
WW: 643 lbs.

This is one of the last Rambler's in the sale. You better come get him.

Lot 126

LMG GILLS PRINCE 8832
September 15, 2008 1312606

Pen 25 LMG Gills Heavens Door 5565 SRN Heavens Door 2095
1068513 LMG Roxie 1080

LMG Miss Roxie 4110 LMG Gills Monument 1504
1009556 LMG Roxie 1080

BW	WW	YW	MK	TM	STAY	MARB	RE	BF
-0.0	30	55	23	38	6	-.14	.14	.00

BW: 88 lbs.
WW: 661 lbs.

Here is the natural bull out of one of our top donor cows. We sold 1/2 interest in her to Polzin Cattle this summer and 1/2 interest in her dam to Leonard Smith, a year ago, and several flushes out of her grand dam. Dan Hooper, NE purchased a maternal brother to this guy a couple years ago as well. This line works.



Dam of Lot 126

Lot 127

LMG GILLS LAST CHANCE 8846
August 20, 2008 1312586

Pen 25 SHOCO Sir Chance SHOCO Sir Robin
1038229 SHOCO Top Pass 098

MJ Ms Red Ram 718-900 RRM Red Ram 718
738917 MJ Miss Hawk Eye 166

BW	WW	YW	MK	TM	STAY	MARB	RE	BF
2.5	31	52	12	27	7	.05	-.04	.00

BW: 90 lbs.
WW: 609 lbs.

We purchased this guys dam came from Schmitz Red Angus out of MN. His sire is a 1/2 brother to VGW Rattler 908.

Lot 128

LMG GILLS RAMBLER 8816
September 27, 2008 1312588

Pen 25 OHRR 10H Dakota Rambler 75R OHRR Dakota Copper 29K
1025344 OHRR Ms Scarlett 10H

LMG Diann 1065 GILCHRIST Coyote B225
783383 LMG Diann 684

BW	WW	YW	MK	TM	STAY	MARB	RE	BF
2.5	27	52	15	29	7	.01	-.05	.00

BW: 89 lbs.
WW: 630 lbs.

Here is the last fall bull. If you want a bull with a bit more age, you better take him home as only yearlings are left.

Lot 129

LMG GILLS INDEED 9018
March 17, 2009 1325554

Pen 31 RED Towaw Indeed 104H 1234513
GLACIER Divide 310
RED Towaw Molly 67C

LMG Dynette 3041 912625
BJR Monu 4X-303
LMG Dynette 902

BW	WW	YW	MK	TM	STAY	MARB	RE	BF
1.0	39	70	22	41	10	-.03	-.04	-.01

BW: ET
BW: 798 lbs.

Selling 50% Possession & 50% Semen Interest!

OK, here he is. I have had more calls on this bull than any other bull in our ranch history, and we haven't really advertised yet. Gill Red Angus is the only breeder in the U.S. that has semen on this guys sire, RED Towaw Indeed 104H. Indeed is what I call a near perfect bull when it comes to making females. He stamps each one with an absolutely gorgeous udder, lots of body, great feet and legs, and they are easy doing as well. Six Mile Red Angus, Canada purchased Indeed from Towaw Cattle Company in Canada. He lived to be I think 9 years old and bred cows every year. These two programs used him as hard as they could, as you can never get to many Indeed daughters in your program. Take a look at the photo below of his daughters, and ask yourself if you could even draw one any prettier? 9018's dam is our top donor cow as well. LMG Miss Dynette 3041. She is a direct daughter of LMG Miss Dynette 902 and is also her highest selling offspring. We sold 1/2 embryo interest to Lucht Red Angus, MT for \$10,500 through the Mile High Classic in Denver 2 years ago. 3041 has several sons selling and a future flush of her as well in this sale. Take a look at her other sons and look at the consistency of her calves. She has a 111 MPPA which makes her I believe the highest MPPA cow we have on the ranch. I would put her up against any other cow in the breed. We sold a package of embryo to Fischer Red Angus, MT and a daughter was part of the Open Heifer Pen of Three Champion at the NILE this past fall. 9018 is an extremely thick made bull, dark cherry red, perfect feet and legs, lots of rib. It is hard to pick out a whole in him. Over the past few years only a handful of Indeed sons and daughters have been sold to buyers in the U.S. The few I can recall were a couple sons and a daughter and they brought \$36,000, \$36,000 and \$35,000. I don't think this guy will sell for that kind of money, but he is definitely the type that can. We are keeping 50% possession and 50% semen interest. We want to use him on our summer calving cows and need him in our possession by July 20. We plan to AI him to lots of our spring, summer, and fall calving cows, as we have a huge amount of faith in him, and we think he will take us in the direction we need to go. So if you are wanting an outcross that has a proven history and pedigree, this is the guy you need to have!!!

We feel that these yearling bulls are out of some of the best cows in the breed. We went out and purchased several cows last year from some of the best breeders throughout the breed, some came to us through dispersion sales and some came to us from other sales that Bryan managed. Bryan gets around the country and see's lots of cows and cowherds all over North America in his other job of managing cow and bull sales for other breeders. He gets to see what is working and what isn't as well. We decided last spring to take advantage of this and we put together a top-notch set of cows. Along with buying this group of cows, we also put in a lot of embryos again, so several of the bulls selling are embryo transplant bulls, which we got out of the very top of our cows and other breeders around the country. We are excited about our purchases and are looking forward to next years calf crop when they are all bred to our own bulls.



Lot 129



Sire of Lot 129



Dam of Lot 129



Paternal Sister of Lot 129



Lot 129

Lot 130

LMG GILLS RATTLER 9017
March 26, 2009 1325556

Pen 31 VGW Rattler 908 659599
SHOCO Sir Robin
VGW Dora-Ship 9348

LMG Dynette 3041 912625
BJR Monu 4X-303
LMG Dynette 902

BW	WW	YW	MK	TM	STAY	MARB	RE	BF
1.3	47	82	12	35	6	-.09	-.05	-.02

BW: ET
BW: 769 lbs.

Retaining 1/4 semen interest

Here he is. In my opinion this guy is the best VGW Rattler 908 son to date. That says a lot, since we have been selling sons out of him now for 8 years. Rattler 908 has always been known for his high performing sons. But truth be known, his daughters are pretty darn good as well. We have a lot of them in our program, and they all milk very well, and bring in heavy calves. Their udder structure is good, and his strong point are his feet. He is the best footed bull we ever owned and he passed that onto his sons and daughters. 9017 is also a son of the great LMG Miss Dynette 3041 that I already bragged about a few times in this catalog, so I am not going to get into it again, but all I am going to say is they don't come much better than her, she does it all and does it right. Rattle 9017 is a stout made, very classy bull with a lot of muscle and rib. 9017 really should be purchased by a registered breeder. His genetics needs to be passed on throughout the breed. We would keep him ourselves, but we already have 2 sons out of LMG Miss Dynette 902 plus we will be using this guys half brother lot 129 hard as well. Take a look at his full sister selling as an open heifer. She is a complete standout as well.



Sire of Lot 130



Dam of Lot 130



Lot 130

Lot 131

LMG GILLS FULLY LOADED 9032
January 10, 2009 1325564

Pen 31 RD Ter-Ron Fully Loaded 540R RED Heartland Knight Charm 1
1234514 RED Ter-Ron Goldie 240L
LSF Rebalas 901 N3022 LMAN King Rob 8621
9090005 GLACIER Rebala

BW	WW	YW	MK	TM	STAY	MARB	RE	BF
3.4	36	63	14	32	7	.00	.01	.00

BW: ET
BW: 718 lbs.

Retaining 1/4 semen interest!

This will be the first Fully Loaded son to sell at auction in the U.S, and boy what a way to start them off. If they all look like this guy, things could get pretty exciting. Fully Loaded himself is a moderate framed, big-bodied bull that hit the breed hard. His son, Full throttle was purchased by Genex and was crowned World Champion at the World Angus Forum this Summer in Canada. He is a big-bodied bull just like this guy. ABS picked up a son this summer as well. They are gearing up and they know the good ones. This guy is just that. Flat out Good!!! If his sire, Fully Loaded, don't excite you, then take a look at who his dam is, she is a full sister to Glacier Chateau. Great cows produce great bulls, and she did just that here. She is a good uddered easy keeping cow that is made right. 9032 is a moderate framed meat wagon. He is very classy, real thick, very deep made, good boned bull with unlimited potential. He looks good and he knows it. He has a super disposition to boot. We plan on collecting him and using him in our program as well.



Sire of Lot 131



Lot 131

Lot 132

LMG GILLS BIG DEAL 9571
March 7, 2009 1325603

Pen 31 BADLANDS New Deal 739 BADLANDS PFFR New Design 347
1167805 PFFR Ms Polly 113
PFFR Ms Cherry 3322 BADLANDS Cut Above 012
919890 PFFR Miss Cherry 115

BW	WW	YW	MK	TM	STAY	MARB	RE	BF
2.2	44	93	24	47	11	-.03	-.04	-.01

BW: 90 lbs.
BW: 792 lbs.

Retaining 1/4 semen interest

When we weighed them over Thanksgiving, this guy was the heaviest bull in the pen. He weighed over 1000 lbs at that time and is only a March born bull. But he isn't that big frame wise. Just guessing I would say about a 6 frame, but if there was a measurement for guts, muscle, and length, I would give him a 10. He is a very impressive individual phenotypically and even better on paper. He has a 113 weaning ratio and is over 90 on the yearling weight EPD. His dam is a very easy keeping cow that we purchased out of the Paul Fehrman Dispersion last fall. She has a 103 MPPA and is out of his famous Cherry cow family. This guy's sire is a high performing bull that is a son of the great PFFR Polly 113 cow. Boy is she a good rip. This guy is pretty much an outcross for the breed and you need to check him out.



Paternal Grand Dam of Lot 130



Lot 132

Lot 133

LMG GILLS MILES AHEAD 9565
February 5, 2009 1325581

Pen 31 RED Six Mile Sakic 832S 1160318 RED Six Mile Aviator 217P
RED Six Mile Siera 157P
PFFR Ms 9824-BEEF 110 769285 BADLANDS Mr Beef 805
CFRA Ms No Equal 9824

BW	WW	YW	MK	TM	STAY	MARB	RE	BF
-0.1	40	66	22	42	10	-.05	-.11	.00

BW: 85 lbs.
WW: 742 lbs.

Selling only 50% semen interest - we are keeping walking rights

Well, what can I say? We bought this guys dam from Paul Fehrman through his dispersal last fall. I really liked her when I took pictures, and she really stood out sale day. She was a must have, and boy am I glad we got her bought. Her first calf really rang the bell. She is a very deep-sided cow, with a super udder, and is one of the best-footed Mr. beef daughters I have ever seen. This guy has been a complete standout since day 1. I really liked him all summer and he was the heaviest actually weaning weight calf on the ranch at 790 lbs! He never quit all winter either. He has a style that I love, with a long clean made extended neck on him, real deep bodied though his heart and flank, and very thick made in his rear quarter as the muscle runs down the inside of his back legs a long ways. His disposition is as good as they come as well. He is a kitten. His sire is the great 6 Mile Sakic bull that Genext purchased from Six Mile Red Angus, Canada. I actually went up to Six Mile and went through their bulls and cows a couple years ago and I chased down Sakics dam. After I saw her I knew I had to get her into our program somehow. We planned on AI'ing to him this summer but the semen wasn't available at the time so we didn't get to. But believe me, we will use this guy and get her in here this way. She is an awesome made cow with a great udder and super body shape. We plan on using this guy real hard naturally in our program. We are keeping 100% walking rights on him and selling 50% semen interest only. I have seen a lot of Sakic sons around the country and this guy is by far my pick. So step up to the plate, get a partner, buy this guy and get as many calves as you can out of him, we are.



Sire of Lot 133

Lot 134

LMG GILLS IOWA 9550
February 24, 2009 1325583

Pen 31 RRA Hi Cap 727 1191395 UBAR High Capacity 224
JRA James 3128
JRA James 3306 785841 BADLANDS Mr Beef 805
JRA James TJ

BW	WW	YW	MK	TM	STAY	MARB	RE	BF
2.0	46	84	22	45	11	.09	.03	.00

BW: 93 lbs.
WW: 759 lbs.

Retaining 1/4 semen interest

Here is a super grand son of the \$51,000 UBAR High Capacity bull that caused such a storm through the breed a few years ago. We purchased the dam to 9550 from James Red Angus Farm out of IA. This girl really stood out in IA. She did a great job raising this guy. He is a big bodied, long made bull with a lot of muscle. His daughters should be easy keeping and his sons should be high performing. His dam has a 104 MPPA and I believe that will continue to rise over the next few years.



Lot 134

Lot 135

LMG GILLS RATTLER 9023
March 30, 2009

Pen 31 VGW Rattler 908 659599 SHOCO Sir Robin
VGW Dora-Ship 9348
LMG Dynette 3041 912625 BJR Monu 4X-303
LMG Dynette 902

BW	WW	YW	MK	TM	STAY	MARB	RE	BF
1.3	47	81	12	36	6	-.09	-.05	.01

BW: ET
WW: 833 lbs.

Wow, what a weaning weight!!! How often do you see a weight like that? I am telling you that his dam, 3041 is one of the best. This guy is long made, big bodied, and heavy muscled. Rattler 908 is one of the best and he proves it time and time again. This is the kind of bull that will make you earn respect come sale day at the barn.



Lot 135



Lot 133



Lot 133 - Photo Taken on Weaning Day



Lot 133 - Photo Taken on Weaning Day



Dam of Lot 133

Full Brothers

Lot 136

LMG GILLS BIG TRIP 9558
February 16, 2009 1338376

Pen 31 BW: ET
WW: 732 lbs.

Lot 137

LMG GILLS BIG TRIP 9037
February 21, 2009 1338919

Pen 31 LCHMN Grand Canyon 1244G 566481 BUF CRK CHF 824-1658
KRN Reba's Robin
BLOCKANA Gal 187 776425 GLACIER Chateau 744
BJR Blockana 502-5185

BW	WW	YW	MK	TM	STAY	MARB	RE	BF
0.1	32	68	23	39	9	.00	.12	.00

BW: ET
WW: 814 lbs.

Waiting on OS Test Results on Both Bulls

These are a couple very good bull that needs some attention. Their dam is a daughter of the great BJR Blockana 502-5185 cow that is nationally known. She has produced several herd sires and donor cows throughout the industry, and she shows us why here. These guys are big bodied, heavily muscled and really eye appealing. Come check them out!



Lot 136

Lot 138

LMG GILLS MILES AHEAD 9557
February 16, 2009 1337894

Pen 32

RED Six Mile Sakic 832S 1160318
RED Six Mile Aviator 217P
RED Six Mile Siera 157P

LMG Dynette 3041 912625
BJR Monu 4X-303
LMG Dynette 902

BW	WW	YW	MK	TM	STAY	MARB	RE	BF
0.8	42	74	25	45	8	-.12	.03	-.02

BW: ET
WW: 717 lbs.

Retaining 1/4 Semen Interest!

Here we go again. This guy is a stud. Just like his half brother, lot 132, his disposition is great. These Sakic bulls are very quiet, thick made, and correct phenotypically. He has it all, plenty of muscle, lots of body from the front to the back, and has a wide top line. His dam is again the great LMG Miss Dynette 3041. She just does it over and over and over. I just can't say enough about her. Her entire family is awesome starting with her dam. LMG Miss Dynette 902 was a great cow and did us a lot of good, and as excited as I was about her, I am actually more excited about 3041. You will see big things out of her in the future from both us and Lucht Red Angus as he owns 1/2 interest in her. We would keep this guy if we weren't already so heavily influenced with the Dynette line as we have 2 sons of 902 we are already using and the 3041 Indeed son in this book that we are going to use a lot. This is the place to get a top Sakic son. Come check them out.



Sire of Lot 138



Dam of Lot 138



Lot 138

Lot 139

LMG GILLS TRAVELER 9561
February 9, 2009 1325588

Pen 32

PFFR Shaq 607 1122280
S A V 8180 Traveler 004
RRM-Nancy-8965-9606

PFFR Ms Logan 90-3301 919901
BADLANDS Cut Above 012
MISS BHR Logan 90

BW	WW	YW	MK	TM	STAY	MARB	RE	BF
2.5	44	78	22	44	12	.00	-.06	.00

BW: 95 lbs.
WW: 706 lbs.

Retaining 1/4 Semen Interest!

Here is the outcross the breed has been waiting for. This guy is a grand son of the famous SAV 8180 Traveler 004 that Schaff Angus Valley has used so hard in his Angus Ranch. A few years back Schaff Angus Valley sold 100 sons and averaged over \$10,000. That is hard to believe. This guy is dam good, and I wish I had a current photo of him, but the day I was taking photos, he had a limp to him and always wanted to hold the foot up a little and none of them turned out. We purchased his dam through the Paul Fehrman Dispersal Sale last fall. She is the daughter of the overall high selling cow that sold to JD Red Angus, and I think this girl has as much potential as her, and I really liked the high seller. Check out her photo, I think you will be impressed. 9561 is a dark made bull with a lot of style. Come get him.



Grand Dam of Lot 139

Lot 141

LMG GILLS PASQUOLE 9042W
February 13, 2009 1338377

Pen 32

RED Brylor Pasquole 213P 1207934
VGW Rambler 1000
RED XXX Lakme 70M

BLOCKANA 1218 825952
LEACHMAN EBV 6703
FEDDES Blockanna 807

BW	WW	YW	MK	TM	STAY	MARB	RE	BF
-3.2	26	51	28	41	8	.23	-.28	.00

BW: ET
WW: 686 lbs.

Retaining 1/4 Semen Interest!

Here is a top herd sire prospect that should grab everyone eye sale day. This bull does a lot of things right. He is stacked full of calving ease and performance. His dam is a super cow as she consistently produces the good ones. Check out the photos of her and her daughter. They are all impressive. His sire is another Canadian bull that Brylor Ranch raised. He is a top calving ease sire with a lot of eye appeal and is out of a tremendous cow. The great Lakme 70M has done a lot over her years, and this grandson may be her top prize yet. 9042 is a big-bodied bull with good thickness and is real deep bodied. Someone is going to get a heck of a heifer bull here.

Lot 140

LMG GILLS FULLY LOADED 9033
January 10, 2009 1325563

Pen 32

RD Ter-Ron Fully Loaded 540R 1234514
RED Heartland Knight Charm 1
RED Ter-Ron Goldie 240L

LSF Rebalas 901 N3022 9090055
LMAN King Rob 8621
GLACIER Rebala

BW	WW	YW	MK	TM	STAY	MARB	RE	BF
3.4	36	63	14	32	7	.00	.01	.00

BW: ET
WW: 653 lbs.

Here is a full brother to Lot 131. This guy is also a very good bull and will be a sleeper in the sale, as I think most everyone will be after his brother, when this guy has the same genetics and should be like him. 9033 is a long made bull with good muscle structure and great feet. His dam is a full sister to Glacier Chateau.



Lot 140



Lot 141



Maternal Sister of Lot 141



Dam of Lot 141

Lot 142

LMG GILLS LUCKY 9574
February 14, 2009 1338380

Pen 32 LUCHT Romeo R052 1091394
C-T Tina 402 956457
BUF CRK Romeo L081 BJR Ms Stony 4X-516
LCHMN Grand Canyon 1244G CTDB Tina 113

BW	WW	YW	MK	TM	STAY	MARB	RE	BF
-0.6	34	69	21	38	9	.03	-.04	.00

BW: ET lbs.
WW: 728 lbs.
Waiting on the OS Test results

Here is an exciting bull. His dam is a super cow with more body than one could hope for. She is correct on her legs and has a great udder as well. She is flat out good. 9574's sire is an outstanding OSF Romeo son. I think he is the best Romeo son ever produced. He is very long made, real deep bodied, and has a good Angus head on him. This was a good cross and should get your attention sale day.



Dam of Lot 142

Lot 143

LMG GILLS BID DAWG 9024
March 21, 2009 1338380

Pen 32 WR Mr. Red Dawg 5335 1046249
LMG Sara 015 742599
BUF CRK Valentino N031 TMAS Ms Fortune 114
HAMMEL Run Cloud 525 LMG Sara 328-817

BW	WW	YW	MK	TM	STAY	MARB	RE	BF
0.8	39	78	24	43	10	-.02	.20	.00

BW: ET lbs.
WW: 748 lbs.
Tested OS Free

This is one of the only yearling Red Dawg sons we have this year. He is a top notch bull and out of a great cow that is also selling through this sale. This boy is big bodied, just like his dam and grand dam and has the muscle that Red Dawg throws, and the maternal bred into him that the Sara cow line is famous for.



Dam of Lot 143

Lot 146

LMG GILLS RATTLER 9555
March 30, 2009 1325590

Pen 32 FRITZ Rattle Fire 5015 1030403
UBAR Lakina 401 979798
FRITZ Rattler 3051 FRITX Kimi 426
RED Brylor New Trend 22 BJR Lakina 502-6243

BW	WW	YW	MK	TM	STAY	MARB	RE	BF
0.5	41	77	21	41	9	-.04	-.14	.00

BW: 83 lbs.
WW: 843 lbs.

Here is a younger calf that has really popped. He looked great coming off the cow, but has really shined over the winter. Check out his adjusted weaning weight of 843 lbs! Quite impressive, but it just goes to show the quality of cows we went out and purchased last year, as this guys dam came from the UBAR Dispersal sale out of MT. I really like this guys dam, but to top it off, this guys great grand daddy is the old VGW Rattler bull that we owned. Good genetics get moved all over the country. This guys dam has a 104 MPPA.

Lot 147

LMG GILLS BIG TRIP 9564
February 9, 2009 1338920

Pen 33 LCHMN Grand Canyon 1244G 566481
GLACIER OSCE 347 404617
BUF CRK CHF 824-1658 KRN Reba's Robin
GLACIER Super Weight GLACIER OSCE 113

BW	WW	YW	MK	TM	STAY	MARB	RE	BF
0.3	32	64	31	47	9	.03	-.07	.01

BW: ET lbs.
WW: 728 lbs.
Waiting on OS Test results

Alright boys and girls. If you like cows that will stay with you forever, maybe even until you retire, then you better have a good look here. I saw this guys dam this fall, her home is near Bozeman, MT at Lucht Red Angus, and she was born in 1993. That makes her 17 years old! Heck, I have known my sister-in-law forever and that is how old she is. The daughters out of this bull will be around forever. This bull is a very good, deep bodied bull that will make you cowboys some money. His sire is known for outstanding daughters as well, and the combination of the two will flat get it done.

Lot 144

LMG GILLS SIGN 9015
March 3, 2009 1338374

Pen 32 5L Signature 5615 1047725
PAULS Bonnebell 3122 979610
5L Norseman King 2291 5L Ruby 199-01
RED Brylor New Trend 22 BJR Bonnebell 7G

BW	WW	YW	MK	TM	STAY	MARB	RE	BF
0.4	38	80	28	47	10	0.16	.09	.01

BW: ET lbs.
WW: 654 lbs.
Waiting on the OS Test results

This good bull is out of the world famous Bonnebell cow line. Her grand dam is the famous 7G cow that Bootjack Ranch owned and used so hard. This line is known for producing great bulls and even better females. The sire is the female making Signature bull that has everyones attention. This guy is classy made, has good muscle, and great depth.



Lot 144

Lot 145

LMG GILLS COMBINATION 9576
March 3, 2009 1325608

Pen 32 MLK CRK Combination 4149 987155
LMG Miss Lass 6822 1156673
LSF Combination A301M BJR Sun Gal 4X-561
SRN Heavens Door 2095 LMG Miss 2008

BW	WW	YW	MK	TM	STAY	MARB	RE	BF
0.9	37	75	11	30	8	.04	-.10	.00

BW: 83 lbs.
WW: 753 lbs.
Waiting on the OS Test results

I really like this guy, as he is a soft made bull with lots of guts, and good muscle. He is out of a first calf heifer and his dam is a Heavens Door daughter. It is the same cow line as the good Lot 4 two-year old bull.



Lot 145

Lot 148

LMG GILLS NEW DEAL 9559
February 28, 2009 1325607

Pen 33 BADLANDS New Deal 739 1167805
PFFR Ms Wrangler 054 798401
BADLANDS PFFR New Design 347 PFFR Ms Polly 113
PFFR Canyon 710 PFFR Miss Wrangler 708

BW	WW	YW	MK	TM	STAY	MARB	RE	BF
3.0	39	82	21	40	9	.08	-.12	.00

BW: 95 lbs.
WW: 699 lbs.
Waiting on OS Test results

Here is another good bull that is out of a top cow we purchased from Fehrman Red Angus. This cow has always been a favorite of mine as she is put together almost perfect. Study her photo. That is what this guy's daughter's will look like.



Dam of Lot 147

Lot 150

LMG GILLS COMBINATION 9583
March 24, 2009 1325604

Pen 33 MLK CRK Combination 4149 987155
LMG 902 Miss Dynette 5205 1091611
LSF Combination A301M BJR Sun Gal 4X-561
DKK Addiction N10 LMG Dynette 902

BW	WW	YW	MK	TM	STAY	MARB	RE	BF
0.3	36	65	20	38	6	NA	NA	NA

Lot 149

LMG GILLS BIG TRIP 9041W
February 20, 2009 1338378

Pen 33 LCHMN Grand Canyon 1244G 566481
BLOCKANA Gal 187 776425
BUF CRK CHF 824-1658 KRN Reba's Robin
GLACIER Chateau BJR Blockana 502-5185

BW	WW	YW	MK	TM	STAY	MARB	RE	BF
0.1	32	68	23	39	9	.00	.12	.02

BW: ET lbs.
WW: 668 lbs.
Waiting on OS Test results

This is another full brother to Lots 136 & 137. This guy is as good as any other here. Lots of body and style while being out of a great cow.



Lot 149

BW: 89 lbs.
WW: 779 lbs.

Here is another exciting lot out of a good LMG Miss Dynette 902 daughter. This guy is sired by our calving ease bull, MLK CRK Combination.



Grand Dam of Lot 150

Lot 151
LMG GILLS SETS A TREND 9006
 March 26, 2009 1325573

Pen 33 MID-AM Uptrend MFIN P14 RED Brylor New Trend 22
 954096 LSF Rachel R313 LA361
 BROWN Ms Make My Day J6 BJR Make My Day 981
 673014 RABR Ms Yoyo 784

BW	WW	YW	MK	TM	STAY	MARB	RE	BF
-0.9	27	51	20	33	6	.13	-.16	.00

BW: ET
WW: 725 lbs.

This good bull goes back to New Trend and Make My Day.

Lot 153
LMG GILLS NEW TREND 9552
 March 9, 2009 1325599

Pen 33 RED JAS Brylor Top Top 6P RED Brylor New Trend 22
 1231869 RED Golden Dawn Kuruba 29L
 TJS Chica T7008 LCB Hoss A444N
 1168252 TJS Chica R546

BW	WW	YW	MK	TM	STAY	MARB	RE	BF
0.4	27	48	22	35	12	.00	-.20	-.01

BW: 79 lbs.
WW: 646 lbs.

Here is a nice made bull that came out of a first calf heifer we purchased from the good Tim Schick herd in MT.

Lot 155
ALMS DESIGN 0139W
 March 14, 2009

Pen 33 BADLANDS Design 46R BADLANDS PFFR New Design 347
 1058333 JDRA Ms. Cassy 021
 1CJL 0139 LEACHMAN None Better Bet E532
 774073 MAID Bitter Simona

BW	WW	YW	MK	TM	STAY	MARB	RE	BF
0.9	30	59	16	31	10	NA	NA	NA

BW: 80 lbs.
WW:

This is a good bull that we got when we purchased them as a cow calf pair from the Alm Red Angus Dispersal sale this spring. He is the youngest bull in the sale but he is also one of the biggest. Just think what he would look like if he was on the same age level as the rest of the bulls.

Lot 152
LMG GILLS RED CHIEF 9580
 March 13, 2009 1325579

Pen 33 3SCC Red Chief R122 RRM Red Chief 9405
 1034067 RRM Miss Heaven L202
 UBAR Kuruba 077 RD Keystone of 3R
 737914 SYA Kuruba 305

BW	WW	YW	MK	TM	STAY	MARB	RE	BF
2.0	23	53	14	25	6	.01	-.09	.00

BW: 87 lbs.
WW: 657 lbs.

Another well made bull that weighed in the mid sixes at weaning.

Lot 154
LMG GILLS FINCHY 9572
 March 29, 2009 1325583

Pen 33 MID-AM MFIN R26 BFCK Cherokee CNYN 4912
 1021011 MFIN Miss L16
 MFIN Miss L22 BL Spruce Robnhood 104F
 772197 MFIN Miss J42

BW	WW	YW	MK	TM	STAY	MARB	RE	BF
1.4	47	87	24	47	10	.10	.17	.00

BW: 90 lbs.
WW: 858 lbs.

I have liked this guy since day 1. Check out his huge weaning weight. He is impressive from top to bottom and will bring in the calves that will pay the bills. His daughters will be great as well, as his dam has a 110 MPPA!!! That is right at the top of our entire herd. Come get a herd changer.



Lot 154 And His Dam On Grass This Summer

Lot 156
LMG GILLS LUCKY 9582
 February 19, 2009 1338381

Pen 33 LUCHT Romeo R052 BUF CRK Romeo L081
 1091394 BJR Ms Stony 4X-516
 C-T Tina 402 LCHMN Grand Canyon 1244G
 956457 CTDB Tina 113

BW	WW	YW	MK	TM	STAY	MARB	RE	BF
-0.6	35	69	56	38	9	.03	-.04	.00

BW: ET
WW: 646 lbs.

Waiting on OS Test Results

Lot 156 is a clean made deep bodied bull that will get the job done.

Lot 157
LMG GILLS RATTLER 9025
 March 26, 2009 1325552

Pen 34 VGW Rattler 908 SHOCO Sir Robin
 659599 VGW Dora-Ship 9348
 LMG Sara 328-817 BUF CRK CHF 824-1658
 629248 LMG Sara 328

BW	WW	YW	MK	TM	STAY	MARB	RE	BF
0.2	32	58	13	29	7	.00	-.09	.00

BW: ET
WW: 731 lbs.
Tested OS free

OK, here we go. This guy is a full brother to LMG Gill Rattler 7520 which we raised and sold to Darryl Thompson. We collected him and bred 30 cows to him the first year and weaned them this fall. They are a great set of calves. Darryl bred 70 cows to him this summer through AI and natural service, and after he pulled him, he said he was as fat as a hog. The efficiency behind this guy is second to none. His dam is the great LMG Sara 817 cow who has been a great donor for us and really moderates size and adds middle to her offspring. This guy is a true herd sire prospect for both the commercial rancher and the seedstock producer. So if you are seriously wanting to get some easy keeping daughters in your program, take a good long look at this guy. We have sold 5 full brothers to this guy and they have averaged \$5000. So step up and take him home.



Dam of Lot 157



Full Brother of Lot 157

Lot 158
LMG GILLS RAMBLER 9573
 February 17, 2009 1338379

Pen 34 OHRR 10H Dakota Rambler 75R OHRR Dakota Copper 29K
 1025344 OHRR Ms Scarlett 10H
 LMG Dynette 3041 BJR Monu 4X-303
 912625 LMG Dynette 902

BW	WW	YW	MK	TM	STAY	MARB	RE	BF
1.8	40	73	21	41	6	-.13	.05	-.02

BW: ET
WW: 600 lbs.

Here is another real good LMG Miss Dynette 3041 son who is out of the good Rambler bull. The daughters out of this bull should be as good as anything you have ever had before.



Dam of Lot 158

Lot 159
LMG GILLS CHOCTAW CHIEF 9013
 April 3, 2009 1325566

Pen 34 CHOCTAW Chief 373 CHOCTAW Chief
 13072 KC ELZB O A 130
 PANHANDLE Robin 842 FCC Rambo 502
 637837 PANHANDLE Penny 220

BW	WW	YW	MK	TM	STAY	MARB	RE	BF
-0.0	23	38	12	23	8	-.09	-.29	.00

BW: ET
WW: 687 lbs.
Waiting on OS Test Results

Here is some proven breeding. The sire is the great Choctaw Chief 373. This is the bull that got Red Angus where we are today. You cross that with the maternal grandsire of Rambo 502, and you will get some amazing daughters.

Lot 161
LMG GILLS EPIC 9560
 April 3, 2009 1325594

Pen 34 BECKTON Epic R682 KJ BECKTON Epic KJ J722
 1042420 BECKTON Susan G199 CO
 MESSMER Ida S014 MESSMER Joshua 019P
 1109541 MESSMER Ida 165P

BW	WW	YW	MK	TM	STAY	MARB	RE	BF
-1.6	28	53	20	34	15	.13	-.18	.01

BW: 79 lbs.
WW: 658 lbs.
 This is a good calving ease type bull.

Lot 163
LMG GILLS SETS A TREND 9002
 April 1, 2009 1325574

Pen 34 MID-AM Uptrend MF1N P14 RED Brylor New Trend 22
 954096 LSF Rachel R313 LA361
 BROWN Ms Make My Day J6 BJR Make My Day 981
 673014 RABR Ms Yoyo 784

BW	WW	YW	MK	TM	STAY	MARB	RE	BF
-0.9	27	51	20	33	6	.13	-.16	.00

BW: ET
WW: 691 lbs.
 This good bull goes back to New trend and Make My Day.

Lot 160
LMG GILLS RATTLER 9581
 March 16, 2009 1325585

Pen 34 FRITZ Rattle Fire 5015 FRITZ Rattler 3051
 1030403 FRITZ Kimi 426
 UBAR Ophelia Logan 281 GLACIER Logan 210
 850006 DOUBLE Tree Ophelia K38

BW	WW	YW	MK	TM	STAY	MARB	RE	BF
1.9	34	63	19	37	12	.16	-.10	-.01

BW: 96 lbs.
WW: 686 lbs.
 Here is a nice bull that is out of a 103 MPPA cow.

Lot 162
LMG GILLS MR SANDMAN 9004
 April 5, 2009 1325578

Pen 34 SANDMAN RCN Sandhill CHF 416
 197187 PANHANDLE Polly 4119
 PANHANDLE Countess 2143 RED Counter 0447
 878381 PANHANDLE Robin 842

BW	WW	YW	MK	TM	STAY	MARB	RE	BF
-0.2	24	49	13	25	5	-.03	-.04	.00

BW: ET
WW: 727 lbs.
 This is another real nice made smooth bull.

Lot 164
LMG GILLS UPPER LEAGUE 9562
 March 3, 2009 1325596

Pen 34 WCC Upper League 66 LCC Major League A502M
 1112460 JRA James 3224
 JRA New Day 4323 WCC New Day 313
 1116639 JRA James 3340

BW	WW	YW	MK	TM	STAY	MARB	RE	BF
-0.9	32	57	19	35	10	.04	.15	.00

BW: 79 lbs.
WW: 665 lbs.
 This good bull goes back to Major League.

Lot 165
LMG GILLS HOSS 9578
 January 17, 2009 1325605

Pen 35 LCB Hoss A444N BLUE Ridge Ponderosa
 924770 RSLND Rebella 120-502
 MRGN Daove ADV 146 PERKS Advance 121R
 1152952 CCF Daove 0248 (V-C)

BW	WW	YW	MK	TM	STAY	MARB	RE	BF
-0.6	30	55	20	35	11	-.08	.04	.00

BW: 76 lbs.
WW: 682 lbs.

Here is the thickest bull in the group of yearlings. This guy has always been a standout. He is deep made, big quartered, and sired by the good Hoss bull that Pieper Red Angus owns and has used so hard. This guy is a big time bull.



Lot 165

Lot 167
LMG GILLS RED CHIEF 9566
 March 24, 2009 1325584

Pen 35 38CC Red Chief R122 RRM Red Chief 9405
 1034067 RRM Miss Heaven L202
 HOLDEN Hi Ho 7151
 SYA Marigold 303
 UBAR Marigold 251
 849965

BW	WW	YW	MK	TM	STAY	MARB	RE	BF
-0.2	28	61	14	27	7	.13	-.06	.00

BW: 79 lbs.
WW: 666 lbs.

Here is another good bull that is out of some good breeding as his dam has a 105 MPPA.

Lot 169
LMG GILLS PASQUOLE 9039W
 February 25, 2009 1338375

Pen 35 RED Brylor Pasquole 213P VGW Rattler 1000
 1207934 RED XXX Lakme 70M
 BLOCKANA 1218 LEACHMAN EBV 6703
 825952 FEDDES Blockanna 807

BW	WW	YW	MK	TM	STAY	MARB	RE	BF
-3.2	26	51	28	41	8	.23	-.28	.00

BW: ET
WW: 667 lbs.

This guy is a full brother to Lot 140. Just like him he is a deep bodied calving ease type bull that will work for you.

Lot 166
LMG GILLS MONUMENT 9553
 February 28, 2009 1325606

Pen 35 LMG Gills Monument 4562 LMG Gills Monument 1504
 968505 LMG Sara 015
 LMG Miss Maiden 77002 4L 323 Continuance R59N
 1176745 LMG Maiden 023

BW	WW	YW	MK	TM	STAY	MARB	RE	BF
1.9	33	69	22	39	8	.00	-.17	.00

BW: 84 lbs.
WW: 691 lbs.

This guy has several donor cows in his pedigree, like Sara 328, Sara 817, Sara 015, and Maiden 023. All of these are owned by us and have done a great job. All 4 of them are still around and Sara 328 was born in 1993, making her a 17-year old cow.

Lot 168
LMG GILLS RATTLER 9568
 March 16, 2009 1325592

Pen 35 FRITZ Rattle Fire 5015 FRITZ Rattler 3051
 1030403 FRITZ Kimi 426
 ASR Ms Vacation R5170 BROWN Vacation H7106
 1030355 MS Geometric 006

BW	WW	YW	MK	TM	STAY	MARB	RE	BF
0.8	34	64	16	33	10	.00	-.04	-.01

BW: 89 lbs.
WW: 654 lbs.

Here is another good bull that goes back to Rattler a few generations back.



Lot 169

Lot 170
LMG GILLS RATTLER 9021
 March 24, 2009 1325551

Pen 35 VGW Rattler 908 SHOCO Sir Robin
 659599 VW Dora-Ship 9348
 LMG Sara 328-817 BUF CRK CHF 824-1658
 629248 LMG Sara 328

BW	WW	YW	MK	TM	STAY	MARB	RE	BF
0.2	32	58	13	29	7	.00	-.09	.00

BW: ET
WW: 718 lbs.
Waiting on OS Test Results

Here is another full brother to LMG Gills Rattler 7520 that sold for \$5000. This line really works.

Lot 172
LMG GILLS KICK OFF 9579
 February 16, 2009 1325589

Pen 35 MID-AM MFIN R26 BFCK Cherokee CNYN 4912
 1021011 MFIN Miss L16
 MFIN Miss Brass N77 LCHMN Top Brass 1048H
 952441 MFIN MissJ11

BW	WW	YW	MK	TM	STAY	MARB	RE	BF
-2.2	31	62	16	31	10	.04	.13	.01

BW: 71 lbs.
WW: 617 lbs.
 This is an excellent numbered calving ease bull. We purchased his good dam from Mark Finch in IA. She really has a lot of eye appeal to her.

Lot 174
LMG GILLS KING ROB 9001
 April 1, 2009 1325565

Pen 36 LMAN King Rob 8621 LEACHMAN Robust 7222
 335067 LEACHMAN Eleanor
 LMAN Bloxy 9038 COPPER Top Chief 301
 335996 LEACHMAN Bloxy 6381

BW	WW	YW	MK	TM	STAY	MARB	RE	BF
0.9	31	62	25	41	7	-.05	.06	.02

BW: ET
WW: 624 lbs.
 Here is a real good King Rob son that has a lot of body in a moderate frame.

Lot 171
LMG GILLS EPIC 9570
 April 2, 2009 1325593

Pen 35 BECKTON Epic R682 KJ BECKTON Epic KJ J722
 1042420 BECKTON Susan G199
 MESSMER Ida S116 MESSMER Judge 36N
 1190533 MESSMER Ida 124

BW	WW	YW	MK	TM	STAY	MARB	RE	BF
2.0	37	68	20	38	13	.23	-.05	.01

BW: 91 lbs.
WW: 703 lbs.
 Here is a good Beckton Epic son out of a good Messmer cow we purchased from their dispersal sale last fall.

Lot 173
LMG GILLS MULBERRY 9029
 March 30, 2009 1325560

Pen 36 RED Fine Line Mulberry 26P RED Compass Mulberry 449M
 1151261 RED DUS Fayette 8G
 CCF-ATKN Coppertop 0246 MABES Rambo Tuo
 872223 MISS Forster CPRTOP 591

BW	WW	YW	MK	TM	STAY	MARB	RE	BF
1.9	39	72	25	44	4	-.05	.00	.00

BW: ET
WW: 771 lbs.
 Here is another good Mulberry son you need to look at.

Lot 175
LMG GILLS INDEED 9019
 April 5, 2009 1325559

Pen 36 RED Towaw Indeed 104H GLACIER Divide 310
 1234513 REDTowaw Molly 67C
 LMG Roxie 1080 DKK Power Surge 708
 783444 LMG Roxie 689-818

BW	WW	YW	MK	TM	STAY	MARB	RE	BF
0.9	35	61	24	42	10	.00	-.01	.00

BW: ET
WW: 644 lbs.
 If you didn't get the other indeed son selling, step up and get this guy. He is out of a heck of a cow line. The Roxie line is one of the best we have. We have flushed this guy's maternal sister, dam, and grand dam and they all work.



Dam of Lot 175

Lot 176
LMG GILLS BOND 9554
 February 19, 2009 1325609

Pen 36 LMG Gills Bond 5604 NSF Bond L007
 1068537 LMG Sara 3027
 LMG Miss Dynette 77008 LCC Vaquero 1412J
 1176784 LMG Dynette 902

BW	WW	YW	MK	TM	STAY	MARB	RE	BF
-1.7	43	83	19	40	7	.03	-.05	.00

BW: 74 lbs.
WW: 800 lbs.
Retaining 1/4 Semen Interest!
 This guys dam is a maternal sister to the great LMG Miss Dynette 3041, and I think we have another great one on our hands. After her first calf, she has earned a 108 MPPA. She is a daughter of LCC Vaquero1412J. This bulls sire is the \$10,500 Gill Bond bull we sold to Hooper's a few years back. To top it off, he has the numbers we love to see.



Full Brother to Lot 176's Dam

Lot 178
LMG GILLS GET R DONE 9011
 April 3, 2009 1325562

Pen 36 PIE Get R Done 684 PIE Chicawa 366
 1137479 PIE Red Ruby 4094
 CCF-ATKN Copper Top 0246 MABES Rambo Top
 872223 MISS Forester CPRTOP 591

BW	WW	YW	MK	TM	STAY	MARB	RE	BF
1.6	36	61	26	44	9	-.02	.19	.00

BW: ET
WW: 694 lbs.
 Here is another good Get R Don son out of a top donor cow that goes back to FRR Miss Forster Coppertop 591.

Lot 180
LMG GILLS BIG DAWG 9026
 March 16, 2009 13225547

Pen 36 WR Mr. Red Dawg 5335 BUF CRK Valentino N031
 1046249 TMAS Ms Fortune 114
 LMG Sara 015 HAMMEL Run Cloud 525
 745299 LMG Sara 328-817

BW	WW	YW	MK	TM	STAY	MARB	RE	BF
0.8	39	78	24	43	10	-.02	.20	.00

BW: ET
WW: 697 lbs.
Waiting on OS Test Results
 This is a real good numbered Red Dawg son out of the Sara cow line.

Lot 177
LMG GILLS RATTLER 9016
 March 31, 2009 1325553

Pen 36 VGW Rattler 908 SHOCO Sir Robin
 659599 VW Dora-Ship 9348
 LMG Sara 328-817 BUFCRK CHF 824-1658
 629248 LMG Sara 328

BW	WW	YW	MK	TM	STAY	MARB	RE	BF
0.2	32	58	13	29	7	.00	-.09	.00

BW: ET
WW: 624 lbs.
Tested OS Free
 This guy is a full brother to 2 other bulls selling here, they are all three out of Rattler and the great LMG Miss Sara 817.

Lot 179
LMG GILLS BOND 9577
 February 13, 2009 1325602

Pen 36 LMG Gills Bond 5604 NSF Bond L007
 1068537 LMG Sara 3027
 LMG Miss Sara 77004 WR Mr. Red Dawg 5335
 1176790 LMG Sara 328-817

BW	WW	YW	MK	TM	STAY	MARB	RE	BF
-2.0	26	54	17	30	8	.03	.17	.00

BW: 71 lbs.
WW: 591 lbs.
Waiting on OS Test Results
 Here is a good calving ease bull that is out of the great Sara line.



Lot 179

Lot 181

LMG GILLS BIG DEAL 9556
March 6, 2009 1325591

Pen 36 BADLANDS New Deal 739 1167805
BADLANDS PFFR New Design 347 PFFR Ms Polly 113
PFFR Ms Polly 453 995033
BADLANDS Cut Above 012 PFFR Ms Polly 113

BW	WW	YW	MK	TM	STAY	MARB	RE	BF
1.2	31	73	22	37	13	-.05	-.16	-.01

BW: 87 lbs.
WW: 588 lbs.

Here is another New Deal son that is out of a super cow.



Dam of Lot 181

Don Mehling Ranch, NE



Lot 182

LMG GILLS PEERLESS 9563
April 19, 2009 1325586

Pen 36 UBAR North Canyon 326 893102
UBAR Grand Canyon 063 UBAR Dynamo 925
UBAR Red Minnie 3513 893085
UBAR Divide 121 UBAR Minemina 060

BW	WW	YW	MK	TM	STAY	MARB	RE	BF
1.2	33	53	13	29	8	.01	-.08	.00

BW: 84 lbs.
WW: 696 lbs.

This is a good way to end any bull sale. This guy has good calving ease and is in a moderate frame.

Lot 183

LMG MISS DYNETTE 3041
April 1, 2009 912625

BJR Monu 4X-303 491246
RED SSS Monu 4X-237C RCRA Samantha
LMG Dynette 902 669901
BUF CRK Barney 3474 LMG Dynette 28

BW	WW	YW	MK	TM	STAY	MARB	RE	BF
0.5	45	82	21	43	8	-.13	.03	-.03

Owned by Gill Red Angus and Lucht Red Angus, MT

What a great opportunity! I believe this is the all time best cow we have ever had. Before she came along, I would have said it was her dam, LMG Dynette 902. Her dam has grossed \$182,975 on 45 lots for an average of \$4066. Her top selling lots was when we sold 1/2 interest in LMG Miss Dynette 3041 to Lucht Red Angus for \$10,500. Anyway, once we get past all that, take a look at 3041's offspring that is selling right here in this sale. The Lot 129 bull is about as good as they come. We plan on using him very hard over the next several years. Another son selling is Lot 130. We think he is probably the best Rattler 908 son we have ever seen or raised. A couple lots down is Lot 133, he is an excellent son of the great Sakic bull that should get into the hands of a registered breeder. Then we have Lots 200 and 226. Both of these females are outstanding. Her flushes have been strong, and on the last flush we froze 27 #1 eggs! Her pedigree doesn't have any Canyon, Julian, Lancer, or King Rob, which makes her an outcross to the breed. But she does have greats like Monu 4X, Sams Prospector, and Barney. Some of the all time best female sires in the breed. After you look at her pedigree, take a look at her EPDs. They are awesome and she has a 111 MPPA. We want to get as many daughters out of her as we can so we plan to continue flushing her off and on her entire life. She will not be on hand sale day, as she will be at the Heart River Flush facility. So if you would like to see her, she is up there. Go take a look.



Lot 183

Lot 184



LMG MARIE 4015

April 12, 2004 968412

SRN Heavens Door 2095 LCHMN Hevn's Sake 1002F
830626 LCHMN Eleanor J1266

LMG 780 070 LM Dakota Coyote 1117
745283 LMG 17-780

BW	WW	YW	MK	TM	STAY	MARB	RE	BF
2.1	41	77	11	32	7	-.05	.11	.00

Pasture bred to SJRA 508 Lantry 734 (1163862) for 21 days beginning on June 23

This cow has never been flushed before, but she definitely needs to be. She has raised some monster bulls and her Red Dawg son selling as Lot 9 here is as good as they come. She is another Heavens Door daughter that may not be the showiest cow on the place, but she is one of the best. She is always as fat as a hog, but yet milks like there is no tomorrow. Come take a look at her, and then look at her son. You will see what I mean.



Lot 184

Lot 185



LMG SARA 3063

February 5, 2003 912525

BJR Monu 4X-303 RED SSS Monu 4X 237C
491246 RCRA Samantha

LMG Sara 1018 DKK Power Surge 708
783285 LMG Sara 328

BW	WW	YW	MK	TM	STAY	MARB	RE	BF
-0.5	32	61	15	31	8	-.16	-.15	-.02

Pasture bred to SJRA 508 Lantry 734 (1163862) for 21 days beginning on June 23

Don't miss this good Sara female as she has a higher MPPA and raises some of the best. She is a direct daughter of BJR Monu 4X and goes back to Rambo 502 on the bottom. Her grand dam LMG Sara 328 is still alive and at the flush facility and she is 17 years old.



Suchy Ranch, ND



Perry Anderson, NE

Lot 186



LMG SARA 328-817

March 17, 1998 629248

BUF CRK CHF 824-1658 BUF CRK Chief 092-824
299558 BFLO CRK Carrie VC473

LMG Sara 328 RCRA Federal Express
424271 LMG Sara 07

BW	WW	YW	MK	TM	STAY	MARB	RE	BF
-1.7	16	35	22	30	9	.05	-.05	.01

Pasture bred starting on July 24 to LMG Gills Bull Dawg for 21 days and then with Red Dawg for 42 days.

Owned by : Gill Red Angus, SD - McClean Red Angus, GA
Morgan Branch Red Angus, NC - Atkinson Reds, TN
Hickory Hills Red Angus, TN

Tested OSC

OK boys, it really hurts to be selling this one. I have had several guys tell me that they think this is probably their most favorite cow in the breed. She is as good looking of a cow that you will find. 817 is a moderate framed cow, 5.5 or so, maybe smaller, but she is a very heavy cow, as she is full of guts, very long and thick made. She has spent a lot of time at Heart River genetics getting flushed and visitors always comment to me how much they like her. She was purchased in the first Santa Sale and we sold 3/4 embryo interest in her to Atkinson Red Angus, TN, Morgan Branch Red Angus, NC McClean Red Angus, GA and Sycamore Farms, FL for \$8,750. We sold her as a "Pick of the Herd" and they all came up and went through the cows and spent a couple days looking. They all agreed that this was the cow they wanted. Since then we all have sold several sons and daughters around the country and if my figures are right, 26 lots have been sold and they have averaged \$4,211, with the high selling being only \$6,000. Talk about some consistency. The only bad part about her is that is she is a carrier for OS. We have tested quite a few of her offspring and they have been running right at 50% positive. But don't let that stop you, as the cattle are the right kind for both the commercial ranchers and the seed stock producers. If you are serious about only having the best, LMG Sara 817 needs to be on your ranch.



Lot 186



Lot 186

Lot 187



LMG SARA 015

April 28, 2000

745299

HAMMEL Run Cloud 525
494395

LMAN RunningCloud 1002B
HAMMEL Cricket 376

LMG Sara 328-817
629248

BUF CRK CHF 82401658
LMG Sara 328

BW	WW	YW	MK	TM	STAY	MARB	RE	BF
-1.9	26	56	28	41	9	.09	-.09	.00

Pasture Exposed to LMG Gills Vin Diesel 7611 for 45 days
Calving to begin on March 1.

Tested OSC

Here is a direct daughter of Sara 817. Their has been times when 015, 817 and the grand dam 328 have all been in the same flush center at the same time. This is as proven of a cow family as you will find and they all do the same thing. They make deep ribbed, easy keeping, heavy milking daughters. 015 has raised several \$5,000 bulls and excellent daughters. She flushes quite well and has the same eye appeal as her dam does. Her sire, Hammel Run Cloud is known for his great daughters. They are some calf raising machines. 7 out of the last 11 sales that we have had, a Run Cloud daughter raised the high selling lot. This girl has also tested for OS and is a carrier. Her son last fall sold to Jerry Olson, SD for \$5750 she does it all the time.



Lot 187

All registered Bred cows should start calving April 1. We left the bull out for 21 days.
They were pasture exposed to SJRA 508 Lantry 734 (1163862)

Lot 188



LMG MISS POTEET 7077

May 12, 2007

1212257

OHRR 10H Dakota Rambler 75R
1025344

OHRR Dakota Copper 29K
OHRR Ms Scarlett 10H

LMG Miss Poteet 2037
864409

RED CFCC 170K
LMG Poteet 967

BW	WW	YW	MK	TM	STAY	MARB	RE	BF
2.8	34	56	20	37	5	-.06	-.07	.00

This is a top 3 year old that is a daughter of the female maker, OHRR Dakota Rambler 75R. Her dam has a 107 MPPA. She also goes back to Rambo 502 and Gilchrist Coyote.

Lot 189



LMG MISS BRANDY 7038

May 20, 2007

1212204

PIE Maximizer 5052
1029127

PIE Atlantic 2204
PIE Power Lady 9077

LMG Miss Brandy 149-885
629314

PIE Copyright 419
LMG Miss Brandy 149

BW	WW	YW	MK	TM	STAY	MARB	RE	BF
1.9	31	55	15	30	10	-.10	.06	.00

This good looking lady goes back to some Black Angus genetics on the sire side. Maximizer's dam has a 110 MPPA.

Lot 190



LMG MISS LYDIA 7026

May 12, 2007

1212191

WR Mr. Red Dawg 5335
1046249

BUF CRK Valentino N031
TMAS Ms Fortune 114

LMG Lydia 769
585836

PIE Copyright 419
LMG Lydia 410

BW	WW	YW	MK	TM	STAY	MARB	RE	BF
0.9	31	61	17	33	9	-.14	.20	.00

Here is a real good Red Dawg daughter that is out of a 12 year old cow. The Lydia cow line has always worked real well for us.

Lot 191



LMG ROXIE 7036

May 18, 2007

1212205

WR Mr. Red Dawg 5335
1046249

BUF CRK Valentino N031
TMAS Ms Fortune 114

LMG Roxie 318-887
629316

LMG Reload 2957
LMG Roxie 318

BW	WW	YW	MK	TM	STAY	MARB	RE	BF
-0.1	25	52	18	30	7	-.09	.26	.00

This is another good Red Dawg daughter that is out of the famous Roxie cow line.

Lot 192



LMG MISS LASS 2026

May 28, 2007

1212249

SRN Heavens Door 2095
830626

LCHMN Hevn's Sake 1002F
LCHMN Eleanor J1266

LMG Miss Lass 2026
864380

VGW Rattler 908
LMG 122-892

BW	WW	YW	MK	TM	STAY	MARB	RE	BF
1.2	38	72	12	31	4	-.08	.14	.00

This good Heavens Door daughter is out of another powerful Rattler daughter that has always done a great job.

Lot 193



LMG MISS DYNETTE 77003

March 7, 2007

1176785

LCC Vaquero 1412J
657222

LEACHMAN Cowbowss 1129G
PARK Miss Wideload F648

LMG Dynette 902
669901

BUF CRK Barney 3474
LMG Dynette 28

BW	WW	YW	MK	TM	STAY	MARB	RE	BF
0.3	29	73	10	29	8	-.05	-.24	.00

Here is a top notch LMG Miss Dynette 902 daughter. The possibilities are endless with this girl. Her sire is the powerful Vaquero bull that has done a great job. We don't sell 902 daughters very often, so here is your chance to get in on something great.



Dam of Lot 193

Holzer Ranch Replacement Heifers



John Hitz, ND

Jerry Leibel Ranch, SD



**SEE YOU
SALE DAY!**

All Bred Heifers will start calving around Feb 25th for 45 days, bred to MLK CRK Combonation.

Lot 194
LMG MISS ROXIE 7022
 May 30, 2007 1212294
 OHRR 10H Dakota Rambler 75R 1025344
 OHRR Dakota Copper 29K
 OHRR Ms Scarlett 10H
 LMG Roxie 4038 968463
 GMRA Wide Spread 972
 LMG Roxie 938

BW	WW	YW	MK	TM	STAY	MARB	RE	BF
1.4	28	54	16	30	5	-.05	.03	.00

Here is another good 3-year old that is from our good Roxie cow line.

Lot 195
LMG MISS COCOA 7003
 May 2, 2007 1212376
 DKK Addiction N10 923316
 BJR JR 107
 DKK Dixie 901
 LMG Miss Cocoa 5020 1068554
 SRN Heavens Door 2095
 LMG Cocoa 057

BW	WW	YW	MK	TM	STAY	MARB	RE	BF
2.6	27	44	15	29	4	-.04	.06	.01

The Addiction daughters are very good cows, and this one goes back to Heavens Door. We like this cross for their easy fleshing ability.

Lot 199
LMG MISS RACHEL 8005
 March 10, 2008 1287802
 LCC Vaquero 1412J 657222
 LEACHMAN Cowboss 1129G
 PARK Miss Wideload F648
 VSV Rachel 349L 772726
 FORSTER CPRTOP 7184ET
 RED Rachel R416

BW	WW	YW	MK	TM	STAY	MARB	RE	BF
0.6	34	69	12	29	7	-.09	-.24	.00

This girl is an amazing heifer. She puts everything right where it needs to be, and has always been a visitor favorite. We purchased a package of eggs from Sycamore Farms out of Florida through the ND Red Select Sale a few years back we got 2 heifers out of the deal, so we decided we can let one of them go. We are actually offering the better one of the two. Her dam has always been a standout and has had a lot of demand in her heifers around the county. Her sire is the good LCC Vaquero 1412J bull that we used several different times. As being a sale manager and I get to see a lot of different females sell throughout the year, I would put this girl right at the top of any bred heifer I sold this year. She is that good.



Lot 199

Lot 196
LMG MISS SUSSETTE 5082
 May 19, 2007 1068574
 RBJR Advance A709 562501
 T3 Chief 2887
 ROY Advance A209
 LMG Miss Susette 2043 864377
 LMG Reload 2957
 LMG Susett 670-884

BW	WW	YW	MK	TM	STAY	MARB	RE	BF
2.4	36	62	11	29	3	-.03	.04	-.01

This good Advance A709 daughter has a lot of style and performance bred into her. She has raised some outstanding calves in the past.



Lot 196

Lot 200
LMG MISS ESSENCE 8001
 March 8, 2008 1287806
 RED Fine Line Mulberry 26P 1151261
 RED Compass Mulberry 449M
 RED DUS Fayette 8G
 RED DMM Miss Essence 58M 1031369
 RED Brylor Dynastar 19S
 RED Sten Essence 42G

BW	WW	YW	MK	TM	STAY	MARB	RE	BF
0.8	37	65	19	37	4	-.02	-.15	.00

What an exciting lot we have here. At Denver a few years ago I purchased a package of embryos from Brylor Ranch out of Canada and Mike Karweik from Michigan, and we got two heifers out of it. Both heifers are identical and are quite good. We decided to sell one of them here. Her sire is Mulberry, while her dam is the great Essence 58M, who is a daughter of the \$50,000 Essence 42G cow that Brylor purchased. Step up her and have at her.



Dam of Lot 200

Lot 197
LMG MISS SUSETTE 5043
 June 9, 2005 1068583
 LCC Tassel Executive 61J 662196
 LMAN Robin Hood 1174B
 TASSEL Lana 15A
 LMG SRSETT 45-865 629295
 BUF CRK Clovis 2713
 LMG Susett 45

BW	WW	YW	MK	TM	STAY	MARB	RE	BF
0.5	27	52	14	28	7	-.13	.18	.00

5043 is another high MPPA cow that is a daughter of the \$30,000 Tassel Executive bull. Executive daughters are all good cows, and full of eye appeal. This girl needs some attention sale day.

Lot 198
LMG DIANN 4028
 March 28, 2004 968445
 VGW Chateau 128 790294
 GLACIER Chateau 744
 VGW Star-Design 9354
 LMG Diann 67-848 629279
 LMG Gill Logan 0446
 LMG Diann 67

BW	WW	YW	MK	TM	STAY	MARB	RE	BF
1.6	21	41	12	23	9	-.01	.18	.00

I like this Chateau daughter. Our VGW Chateau females are all real good producers. In last years bull sale, they raised some of the top producers. This girl does the same.



Grand Dam of Lot 200

Lot 201

LMG MISS ROXIE 8006
March 8, 2008 1287803

OHRR 10H Dakota Rambler 75R 1025344
OHRR Dakota Copper 29K
OHRR Ms Scarlett 10H
LMG Roxie 689-818
629249
HAMMEL Run Cloud 525
LMG Roxie 689

BW	WW	YW	MK	TM	STAY	MARB	RE	BF
0.9	31	58	23	39	6	-.06	.06	.00

Here is your chance to get some of the absolute best breeding we can offer you. Her sire is the great OHRR Rambler 75R bull who is out of a great cow. His daughters are super cows. 8006's dam is the 12 year old LMG Miss Roxie 818 cow. We think so much of this cow family that this summer we flushed her, her daughter 1080, and a grand daughter 4110 all at the same time. Plus we are using two different sons of 1080 in our program. We are trying to get as much of this cow line in our program that we can. This heifer will be a donor cow for you some day.



Dam of Lot 201

Since we are growing our spring calving herd, we moved up a handful of the heifers from our summer calving group and bred them with our spring calving heifers. The following bred heifers were born in May but are bred like the rest of the heifers selling as they will start calving around Feb 25th for 45 days, and are bred to Milk Creek Combination.

Lot 202

LMG MISS DYNETTE 8002
March 1, 2008 1287801

LMG Gills Monument 4562 968505
LMG Gills Monument 1504
LMG Sara 015
LMG 902 Miss Dynette 5205 1091611
DKK Addiction N10
LMG Dynette 902

BW	WW	YW	MK	TM	STAY	MARB	RE	BF
0.7	30	64	25	40	8	-.03	-.08	-.01

8002 is another well bred heifer as her dam is a LMG Miss Dynette daughter and her sire is a son of LMG Sara 015 and a grandson of LMG Sara 817. Look at the possibilities here. This heifer is made right and you will like her.



Sire of Lot 202

Lot 205

LMG MISS SUSETTE 8046
May 1, 2008 1284231

SRN Heavens Door 2095 830626
LCHMN Hevn's Sake 1002F
LCHMN Eleanor J1266
LMG Miss Susette 4131 1009588
LMG Gills Horizon 1551
LMG Miss Susette 2058

BW	WW	YW	MK	TM	STAY	MARB	RE	BF
1.3	36	68	11	30	5	-.10	.04	.00

This is a good Heavens Door daughter. We really like the Heavens Door females as they are all extremely easy fleshing. 8046 is dark red, real classy made and has the brood cow look to her.



Lot 205

Lot 206

LMG MISS LASS 8110
May 1, 2008 1284124

WR Mr. Red Dawg 5335 1046249
TMAS Ms Fortune 114
BUF CRK Valentino N031
LMG Lass 939 669938
BUF CRK Barney 3474
LMG Lass 431

BW	WW	YW	MK	TM	STAY	MARB	RE	BF
1.8	39	70	16	36	10	-.11	.26	.00

Here is a powerful Red Dawg daughter that is out of a good Barney cow. The Barney daughters have been standouts in our herd. They are easy fleshing, deep bodied, heavy muscled and top producers. I can only expect the same here.

Lot 207

LMG MISS MARGO 8088
May 15, 2008 1284292

OHRR 10H Dakota Rambler 75R 1035344
OHRR Dakota Copper 29K
OHRR Ms Scarlett 10H
LMG Miss Margo 5070 1068604
VGW Rattler 908
LMG Margo 1048

BW	WW	YW	MK	TM	STAY	MARB	RE	BF
3.1	39	67	15	34	6	-.05	.01	.00

Here is a good heifer that is a grand daughter of one of our all time best looking cows, LMG Miss Margo 1048. 1048 was a good cow as well, and always brought in one way above average. 8088's sire is the top Rambler 75R bull.

Lot 203

LMG MISS DIANN 8003
May 15, 2008 1284118

PIE Maximizer 5052 1029127
PIE Atlantic 2204
PIE Power Lady 9077
LMG Diann 908 669907
HAMMEL Run Cloud 525
LMG Diann 718

BW	WW	YW	MK	TM	STAY	MARB	RE	BF
-1.2	32	56	23	39	7	-.04	.09	-.01

This good heifer is a maternal sister to the Select Sires calving ease specialist LMG Gills Custer. Her dam has a 106 MPPA while Maximizer's dam has a 110 MPPA.

Lot 204

LMG MISS STARLETT 8068
May 5, 2008 1284315

LMG Gills Heavens Door 5570 1068518
SRN Heavens Door 2095
LMG Cherokee 126
LMG Miss Starlett 5149 1068677
DKK Addiction N10
LMG Starlet 3057

BW	WW	YW	MK	TM	STAY	MARB	RE	BF
0.3	27	53	14	28	3	-.08	.05	.00

This good number heifer is out of a very good Addiction daughter. Her sire is a powerful Heavens Door son. Several paternal half brothers sell throughout this sale. Check them out and then come get her.



Lot 204

Lot 208

LMG MISS ROXIE 8038
June 18, 2008 1284207

OHRR 10H Dakota Rambler 75R 1025344
OHRR Dakota Copper 29K
OHRR Ms Scarlett 10H
LMGRociw 4038 968463
GMRA Wide Spread 972
LMG Roxie 938

BW	WW	YW	MK	TM	STAY	MARB	RE	BF
1.6	29	56	16	30	5	-.05	.03	.00

If you are wanting some good females, here is your chance, as we are selling a lot of them right now. Come get a couple.



Grand Dam of Lot 207

Lot 209

LMG MISS DYNETTE 9005
March 26, 2009 1325612

VGW Rattler 908 SHOCO Sir Robin
659599 VGW Dora-Ship 9348

LMG Dynette 3041 BJR Monu 4X-303
912625 LMG Dynette 902

BW	WW	YW	MK	TM	STAY	MARB	RE	BF
1.3	47	82	12	35	6	-.09	-.05	-.02

BW: ET
BW: 669 lbs.

Here is a LMG Miss Dynette 3041 daughter, and boy is she a good classy heifer. She definitely has the look to be a brood cow, but she would work in the show ring as well. She walks with pizzaz as she struts around. She acts like she knows she is good. She has a good hip on her and great feet and legs under her. Her full brother sells as lot 130, and he is the same way. They both are excellent. Their sire, VGW Rattler 908 has given us a lot of good daughters, but I think this one will end up being his best. Come get a top notch heifer for your good program.



Lot 209



Lot 209



Dam of Lot 209

Lot 210

LMG MISS ANITA 9009
March 22, 2009 1325623

BECKTON Lancer S281 T7 BECKTON Lancer T7 M089
1118744 BECKTON Tamara M515 LN

MESSMER Anita M51 GLACIER Chateau 744
834295 MESSMER Anita 9629

BW	WW	YW	MK	TM	STAY	MARB	RE	BF
0.3	41	81	17	38	14	.07	.02	.00

BW: 84 lbs.
BW: 677 lbs.

This girl has always been a standout, just like her dam. Her dam has a 104 MPPA and did a great job here. This girl needs some attention sale day, and I am sure she will get it.



Lot 210

Lot 211

LMG MISS IDA 9019
March 12, 2009 1325626

BROWN Commitment S7206 LJC Lancer 806
1120008 BROWN Ms Shazzam P7940

MESSMER Ida 125N LCHMN Bullseye 1379G
904752 MESSMER Ida 9966

BW	WW	YW	MK	TM	STAY	MARB	RE	BF
-0.2	39	72	24	43	8	.27	.01	.01

BW: 79 lbs.
BW: 678 lbs.

Here is one of the few daughters that will be selling this year out of the \$100,000 brown Commitment bull that ABS and a group purchased a couple years ago. This daughter is just like her daddy, deep, thick and moderate. I like her and I think you will too. Oh ya, her dam has a 108 MPPA to boot.



Lot 211

Lot 212

LMG MISS NEXA 9027
March 7, 2009 1325633

MESSMER Judge 36N BECKTON Julian GG B571
904822 MESSMER Esther 2254

MESSMER Nexa 084R LCC Vaquero 1412J
1037195 MESSMER Nexa 9682

BW	WW	YW	MK	TM	STAY	MARB	RE	BF
-0.7	31	59	16	31	13	.13	-.01	.00

BW: 78 lbs.
BW: 610 lbs.
Waiting on OS Test Results

This is a very good judge daughter that has excellent number. Her dam is a top cow as well as she has a 104 MPPA.

Lot 213

LMG MISS GINNIE 9018
March 3, 2009 1325629

MESSMER Packer S008 MESSMER Joshua 019P
1109534 MESSMER Millie 124P

MESSMER Ginnie 265P GLACIER Marias 548
969368 MESSMER Ginnie 9441

BW	WW	YW	MK	TM	STAY	MARB	RE	BF
0.2	37	63	24	42	14	.17	.25	.00

BW: 81 lbs.
BW: 611 lbs.

Check out the numbers on this good Packer daughter. Her dam has a 102 MPPA and is out of the good Ginnie cow line from Messmer's.

Lot 214
LMG MISS CHENEY 9020
 March 6, 2009 1325628

BECKTON Lancer S281 T7 1118744
 BECKTON Lancer T7 M089
 BECKTON Tamara M515 LN
 MESSMER Cheney 277P 969358
 LMAN King Rob 8621
 NODAK Lady Chief

BW	WW	YW	MK	TM	STAY	MARB	RE	BF
0.9	35	70	17	35	11	.06	.06	.00

BW: 84 lbs.
BW: 593 lbs.

This is another top Lancer daughter that goes back to King Rob on the bottom side. Come get a heifer out of a proven pedigree.

Lot 215
LMG MISS ZINA 9025
 March 27, 2009 1325630

BECKTON Lancer S281 T7 1118744
 BECKTON Lancer T7 M089
 BECKTON Tamara M515 LN
 MESSMER Zina 244P 969379
 BJR JR 107
 MESSMER Zina 9811

BW	WW	YW	MK	TM	STAY	MARB	RE	BF
2.4	45	82	22	44	12	.07	-.02	-.01

BW: 96 lbs.
BW: 694 lbs.

Waiting on OS Test Results

This good Lancer heifer is out of the famous Zina line and her dam has a 106 MPPA.

Lot 217
LMG MISS DYNETTE 8327
 September 23, 2008 1312655

MLK CRK Combination 4149 987155
 LSF Combination A301M
 BJR Sun Gal 4X-561
 LMG Miss Dynette 6308 1157506
 GMRA Wide Spread 972
 LMG Dynette 902

BW	WW	YW	MK	TM	STAY	MARB	RE	BF
0.7	38	78	13	32	8	.08	-.02	.00

BW: 80 lbs.
BW: 653 lbs.

Wow, what a deal here. The dam to this heifer is out of one of the best flushes we have ever had. A full sister to 8327's dam sold to Ray Brickl, WI for \$6250, and we sold 1/2 interest of a full brother to Brenner Angus, ND for \$6500. We are using this bull very hard on our summer calving cows. We are excited about what his daughters should be. Ray Brickl told me not to long ago that he just loves his heifer and wishes he had a whole herd of them just like her.

Since most everyone calves in the spring, we decided to keep these fall born heifers open. They have never been with a bull so you can take them home and breed them the way you want to!



Full Brother of Lot 217

Lot 216
LMG MISS PANDORA 9022
 March 8, 2009 1325632

MESSMER Packer S008 119534
 MESSMER Joshua 019P
 MESSMER Millie 124P
 MESSMER Pandora 055R 1037184
 LODI Prince 2632
 MESSMER Pandora 9498

BW	WW	YW	MK	TM	STAY	MARB	RE	BF
-2.5	30	59	25	40	16	.08	.10	.00

BW: 71 lbs.
BW: 615 lbs.

Waiting on OS Test results

This is another good Packer daughter that is out of a top cow that has a 103 MPPA.



Rich Waller Ranch, NE

Lot 218
PFFR MS FORTUNE 8114
 July 12, 2008 1271230

BADLANDS Design 22S 1128404
 BADLANDS PFFR New Design 347
 BADLANDS Mindy 622
 PFFR Ms Fortune 860 608202
 ODP Express 3105
 DMS Ms V8 Fortune 5169

BW	WW	YW	MK	TM	STAY	MARB	RE	BF
4.8	43	76	19	40	9	.04	.01	.00

BW: 77 lbs.
BW: 596 lbs.

This good heifer came to us through the Paul Fehrman Dispersal Sale last fall. She was an early born fall calf and they sold as a pair. We liked them a lot and decided to take them home. This lady has a lot of performance bred into her and will make a great cow as her dam sure is with a 102 MPPA.

Lot 219
LMG MISS ROXIE 8324
 September 8, 2008 1312584

OHRR 10H Dakota Rambler 75R 1025344
 OHRR Dakota Copper 29K
 OHRR Ms Scarlett 10H
 LMG Roxie 966 669965
 LMG Reload 2957
 LMG Roxie 660

BW	WW	YW	MK	TM	STAY	MARB	RE	BF
2.0	28	51	21	35	4	-.09	.12	.00

BW: 83 lbs.
BW: 562 lbs.

This powerful heifer has everything going her way. She is out of the great female producing OHRR Rambler 75R bull that is a son of the ABS owned Dakota Copper 29K bull. Her dam is a Roxie cow and has a 107 MPPA. This girl has the makings of becoming a true donor cow.



Jack Bickel Replacement Heifers



Messner Ranch, ND



Lot 220
LMG MISS MARIE 8331
 September 2, 2008 1312585

OHRR 10H Dakota Rambler 75R 1025344
 OHRR Dakota Copper 29K
 OHRR Ms Scarlett 10H

LMG Marie 983 669982
 LCHMN Hevn's Sake 1002F
 LMG Marie 40

BW	WW	YW	MK	TM	STAY	MARB	RE	BF
4.3	36	65	17	35	5	-.15	.04	.00

BW: 94 lbs.
BW: 561 lbs.

I know this will be a top notch cow when she grows up, as her dam is, which is selling as Lot 230. All of her maternal sisters are top notch cows as well. Her dam, 983 has had 8 calves and 7 of them have been heifers. This is why we can sell both her dam and this lady. This truly is a good cow line and will work for you.



Dam of Lot 220

Lot 221
LMG MISS LARK 8323
 September 13, 2008 1312599

OHRR 10H Dakota Rambler 75R 1025344
 OHRR Dakota Copper 29K
 OHRR Ms Scarlett 10H

LMG Lark 3051 912644
 LMG Gills Monument 1504
 LMG Lark 952

BW	WW	YW	MK	TM	STAY	MARB	RE	BF
1.3	32	63	21	37	4	-.14	.01	.00

BW: 83 lbs.
BW: 681 lbs.

The Rambler daughters will be some of the best females in the breed, and we are selling some of ours. Use our mistake to your advantage. This girl is out of a Gills Monument 1504 daughter that has a 104 MPPA. We really like our Monument daughters and are thinking of going back and AI to him again, just to get a few more.



Sire of Lot 222

Larry Jacobs Steers



Lot 223
LMG MISS PENNY 8498
 August 20, 2008 1312602

PIE Maximizer 5052 1029127
 PIE Atlantic 2204
 PIE Power Lady 9077

LMG Penny 4000 968391
 VGW Chateau 128
 SEVE Penny 027K

BW	WW	YW	MK	TM	STAY	MARB	RE	BF
1.0	40	74	24	44	8	-.07	.09	.00

BW: 80 lbs.
BW: 662 lbs.

Boy are we messing up. All these heifers are out of some of our absolute best fall cows. Take this girl for example. Her dam has a 108 MPPA. How often do you get a chance to buy heifers this good out of cows that are this proven? Last fall we sold a maternal brother to this girls dam to Fitzhugh Ranch for \$4750. They will only buy the best, and for good reason, as they have a huge demand for their calves. They sold their 600 lbs heifers right off the cow this year for \$1.13, and 630 lbs steers for \$1.12. Come get this girl.

Lot 224A
LMG MISS DYNETTE 8314
 September 2, 2008 1312598

OHRR 10H Dakota Rambler 75R 1025344
 OHRR Dakota Copper 29K
 OHRR Ms Scarlett 10H

LMG Dynett 3046 912636
 RED CFCC 170K
 LMG Dynette 936

BW	WW	YW	MK	TM	STAY	MARB	RE	BF
3.3	32	55	18	34	6	-.09	-.06	.00

BW: 89 lbs.
BW: 610 lbs.

This heifer is lotted the way she is due to my mistake. I forgot to put her in the catalog and when we put the lot tags in the sale cattle, she was the only one without a tag. So I had to slip her in the catalog and lot her this way. Anyway, she is a good Rambler daughter with alot of eye appeal.

Jones Replacement Heifers



Lot 224
LMG MISS Rita 8302
 September 8, 2008 1312629

OHRR 10H Dakota Rambler 75R 1025344
 OHRR Dakota Copper 29K
 OHRR Ms Scarlett 10H

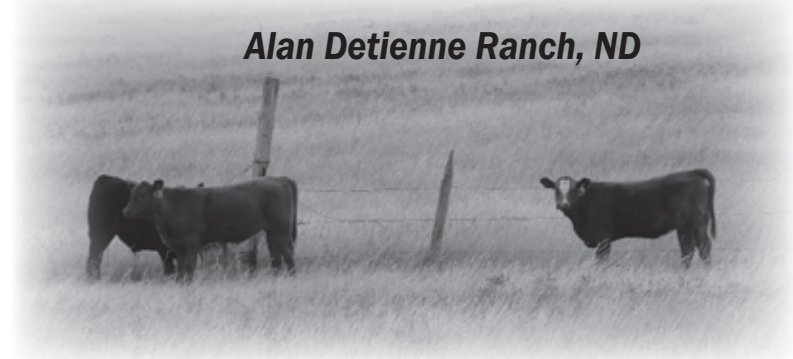
LMG Rita 1027 783332
 LMG Reload 2957
 CILLAS Rita 422

BW	WW	YW	MK	TM	STAY	MARB	RE	BF
2.6	35	63	19	37	6	-.10	.05	.00

BW: 85 lbs.
BW: 666 lbs.

We are about out of these good heifers. Her dam has a 105 MPPA and goes back to Design and Oscar on the bottom side of the pedigree.

Alan Detienne Ranch, ND



Fitzhugh Ranch, WY



We decided to sell you some Fall heifer calf pairs. You can't get these at very many places so we thought we would throw a few in. These are top end cows and will work for you. They were all EXPOSED to LMG Gills Vin Diesel 7611 for 21 days starting on December 10.

Lot 225
LMG MISS DYNETTE 5145
 May 18, 2005 1068680

OHRR 10H Dakota Rambler 75R BJR JR 107
 1025344 DKK Dixie 901

LMG Dynette 3041 BJR Monu 4X-303
 912625 LMG Dynette 902

BW	WW	YW	MK	TM	STAY	MARB	RE	BF
0.2	35	61	24	42	7	-.06	.04	-.03

Wow, what a deal. We are actually selling a Dynette 3041 daughter. This gal is also a daughter of DKK Addiction N10 and is quite impressive as well. I don't think I need to talk a whole lot about the Dynette line again, as I have several times throughout the entire catalog. So all I will say is don't miss out. Pedigrees and opportunities like this don't happen very often.

Lot 225A
LMG MISS DYNETTE
 Heifer Calf BW: 80 lbs. October 1, 2009
 Sire: WR Mr. Red Dawg 5335

Lot 226
LMG MISS ROXIE 7305
 September 7, 2007 1232984

PIE Accelerator 4028 PERKS Advance 121R
 979303 PIE Ms Dinero 1035

LMG Roxie 966 LMG Reload 2957
 669965 LMG Roxie 660

BW	WW	YW	MK	TM	STAY	MARB	RE	BF
1.3	26	56	14	27	5	-.05	.22	-.01

This girl is out of the great Roxie cow line and has a maternal sister selling in the open heifers group. Her dam has a 107 MPPA and does a great job.

Lot 226A
LMG MISS ROXIE
 Heifer Calf BW: 82 lbs. August 30, 2009
 Sire: WR Mr. Red Dawg 5335

Lot 227
LMG MISS SARA 5033
 May 31, 2005 1068566

SRN Heavens Door 2095 LCHMN Hevn's Sake 1002F
 830626 LCHMN Eleanor J1266

LMG Sara 49-804 BUF CRK Clovis 2713
 629235 LMG Sara 49

BW	WW	YW	MK	TM	STAY	MARB	RE	BF
1.5	41	75	20	40	5	-.10	.20	.00

Here is a high good Heavens Door daughter that has a 106 MPPA. She is a grand daughter of the great Sara 49 cow.

Lot 227A
LMG MISS SARA
 Heifer Calf BW: 74 lbs. September 11, 2009
 Sire: LMG Gills Wide Spread 6800

Lot 228
LMG MISS ROXIE 6005
 May 11, 2006 1147789

LMG Gills Monument 4562 LMG Gills Monument 1504
 968505 LMG Sara 015

LMG Roxie 4038 GMRA Wide Spread 972
 968463 LMG Roxie 938

BW	WW	YW	MK	TM	STAY	MARB	RE	BF
1.3	27	62	17	30	7	.00	-.09	.00

This good young cow is a daughter of the LMG Gills Monument 4562 that we sold to Mclean Red Angus, GA and Bull Hill Ranch, SD. We used him a couple different times and have been real happy with the results. His dam is a super cow is part of the great Sara line.

Lot 228A
LMG MISS CORA
 Heifer Calf BW: 82 lbs. August 30, 2009
 Sire: WR Mr. Red Dawg 5335

Lot 229
LMG MISS MAIDEN 2039
 March 30, 2002 864350

RED CFCC 170K FCC Rambo 502
 772200 LARSON Flo-Marie 185

LMG Maiden 331-809 BUF CRK Barney 3474
 629240 LMG Maiden 331

BW	WW	YW	MK	TM	STAY	MARB	RE	BF
-0.2	24	37	16	29	7	-.09	-.30	.00

This good cow is a grand daughter of both Rambo 502 and Buf Crk Barney. She has a 101 MPPA and looks good as well.

Lot 229A
LMG MISS MAIDEN
 Heifer Calf BW: 82 lbs. September 9, 2009
 Sire: LMG Gills Wide Spread 6800

Lot 230
LMG MARIE 983
 March 25, 1999 669982

LCHMN Hevn's Sake 1002F LAKOTAS Heavenly 305
 532901 LEACHMAN Prilark

LMG Marie 40 RED Rocket R103
 448913 LMG Marie 217

BW	WW	YW	MK	TM	STAY	MARB	RE	BF
2.4	37	69	15	34	6	-.18	.01	.00

Here is a cow that really should be flushed. If she was to stay here, she would be in a year or two. This girl has done a great job year after year. She is a Heavens Sake daughter, and probably one of the best in the country. Her maternal grand sire is the good Rambo 502 son we used, Red Rocket R103. She is deep ribbed and easy keeping. Her daughters are great cows as well. Jump up and take her home.

Lot 230A
LMG MISS MARIE
 Heifer Calf BW: 82 lbs. September 9, 2009
 Sire: WR Mr. Red Dawg 5335



Lot 230



Like Having an Extra Hand.

"With the growing labor challenges in agriculture today, the quality and service of Cattleman's Choice Loomix is the solution.

The quality of the ingredients is unsurpassed, but the extra hand, especially for me as I spend so much time on the road, makes Loomix® liquid supplements the natural choice for my ranch and family."

Trent Loos

Rancher, Loos Tales Host & Agriculture Advocate

LOOMIX® fills the gap between what forage delivers and your cattle requirements.

- Readily available source of Phosphorous, Trace Minerals, Proteins & Vitamins.
- Formulas can be customized to meet your operation's needs
- Loomix® is a great carrier for approved medications & additives.

LOOMIX® is delivered directly to your cattle.

- A highly trained dealer delivers Loomix®.
- The delivered cost is the fed cost.
- Loomix® allows you to save on your labor costs.
- No truck, storage tanks or large inventories' are required.

LOOMIX® is available 24 hours a day.

- Proven consumption control to budget your cost.
- Fed in an open top trough to allow for more even supplementation.

LOOMIX® feeds the rumen bacteria to get the most out of your roughage.

- Loomix® products can increase fiber digestion up to 34%.
- In many cases Loomix® will allow you to utilize lower quality roughage.



For more information go to www.loomix.com and listen to Trent's latest discussion on Loomix® or call 800-870-0356.



Mobridge Livestock Market

(605) 845-3622

(800) 658-3598

Tom Anderberg

(605) 845-3702

(605) 845-6200

Jason Anderberg

(605) 845-5440

(605) 845-0038

Casey Perman

(605) 660-1775

Tigh Anderberg

(605) 845-3484

(605) 845-4877

We are in the country every day and would like to visit with you about your cattle marketing needs.
Cattle Sales Every Thursday. Horse Sales 1st Saturday of Every Month

Heart River Genetics, LLC

Bovine Embryo Transfer and Donor Housing Facility • AETA Certified Technicians
Monthly Veterinary Inspection • Excellent Health & Nutrition



Located 7 miles south of Belfield, ND, on US Hwy 85, west side of highway

Chuck & Annette Steffan • 4291 Hwy 85 South • Belfield, ND 58622
701-575-8145 • cell: 701-290-9745 • heartrr@ndgateway.com

Biegler Equipment/Napa Auto Parts

**"You Name It,
We Got It"**

- Tires
- Ag Parts
- Iron
- Oil
- Oil Chagnes
- Mechanics



123 Main St - Timber Lake, SD

605-865-3505

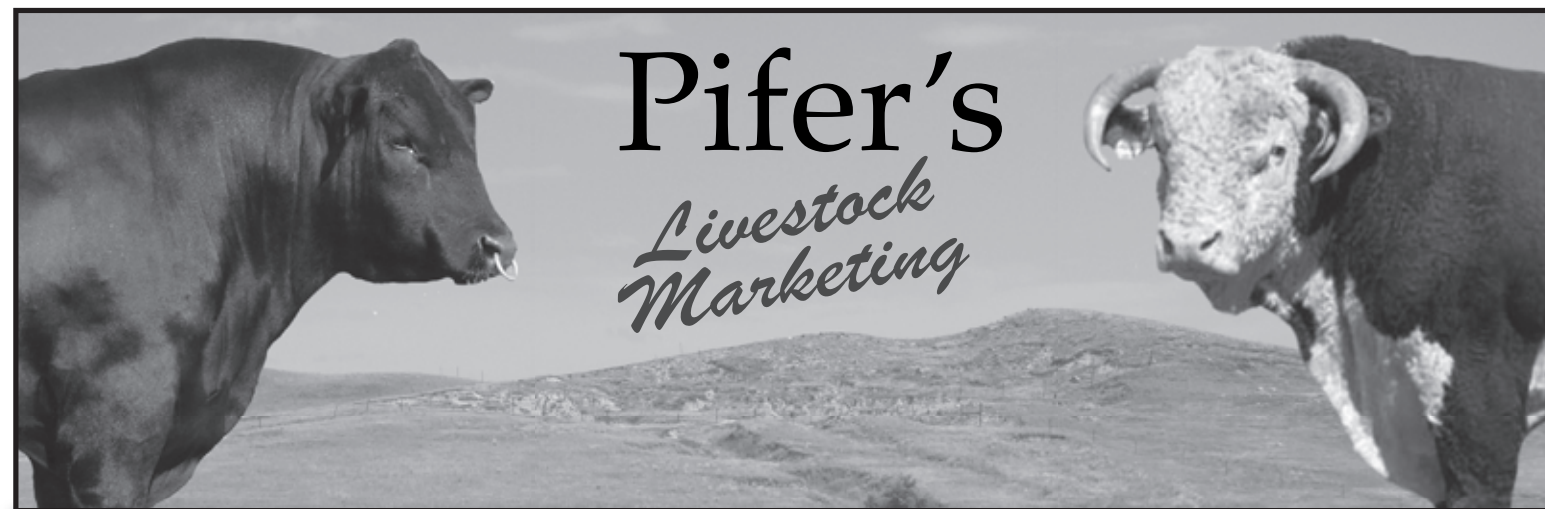


Locken Oil

Since 1960

**Gas & Diesel Bulk Delivery &
Convenience Store**

*Joe & Mandy Locken
605-466-2143*



Cattlemen know what to expect when you integrate great genetics!

Here is what you can expect from us!!

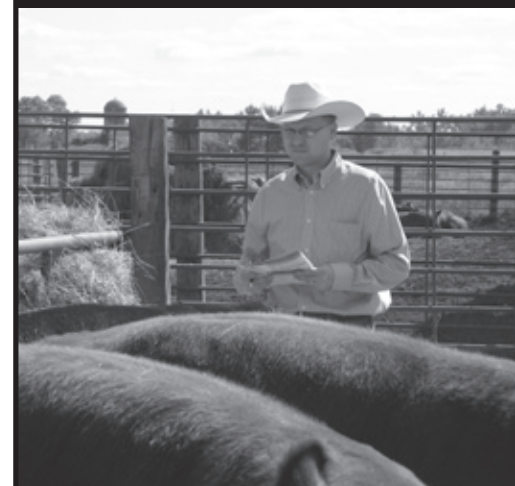
- Marketing Efficiencies • Dynamic Sales Team
- Extensive Market Experience • Quality Catalogs
- Premier Advertising • Purchasing Power
- Strong Buyer Base • Quality Photography
- Comprehensive Mailing List

Our Services Include:

- Livestock Auction & Sales Management
- Consulting Services
- Auction Services
- Quality Photography
- Buy & Sell Cattle for Commercial & Purebred Breeders



Meet Our Livestock Marketing Team



**Pifer's Livestock Marketing
Corporate Office**

1506 29th Ave South
Moorhead, MN 56560
218.477.1968

Bryan Gill

Sales Manager
701.730.0134
bigredgenetics@hotmail.com

Andy Mrnak

Sales Manager/Auctioneer
701.206.1095
andy@pifers.com

Kevin Pifer

Auctioneer
701.238.5810
kpifer@pifers.com

Kenton Carlson

Sales Manager
701.226.2585
kenton@pifers.com

**"Call us today and we will come to your ranch at no obligation."
Book your 2010 Sales & Auctions Now!**

877.700.4099

www.pifers.com

